

CMS INSTALLATION AND USAGE GUIDE

Contact

- 1-1 CMS Installation..... 2
- 1-2 Login and environment of CMS..... 5
- 1-3 Devices, Groups, Emaps Configuration..... 7
- 1-4 Toolbar..... 19
- 1-5 Live View Window..... 39
- 1-6 Multiple Windows..... 42
- 1-7 PTZ Control..... 43

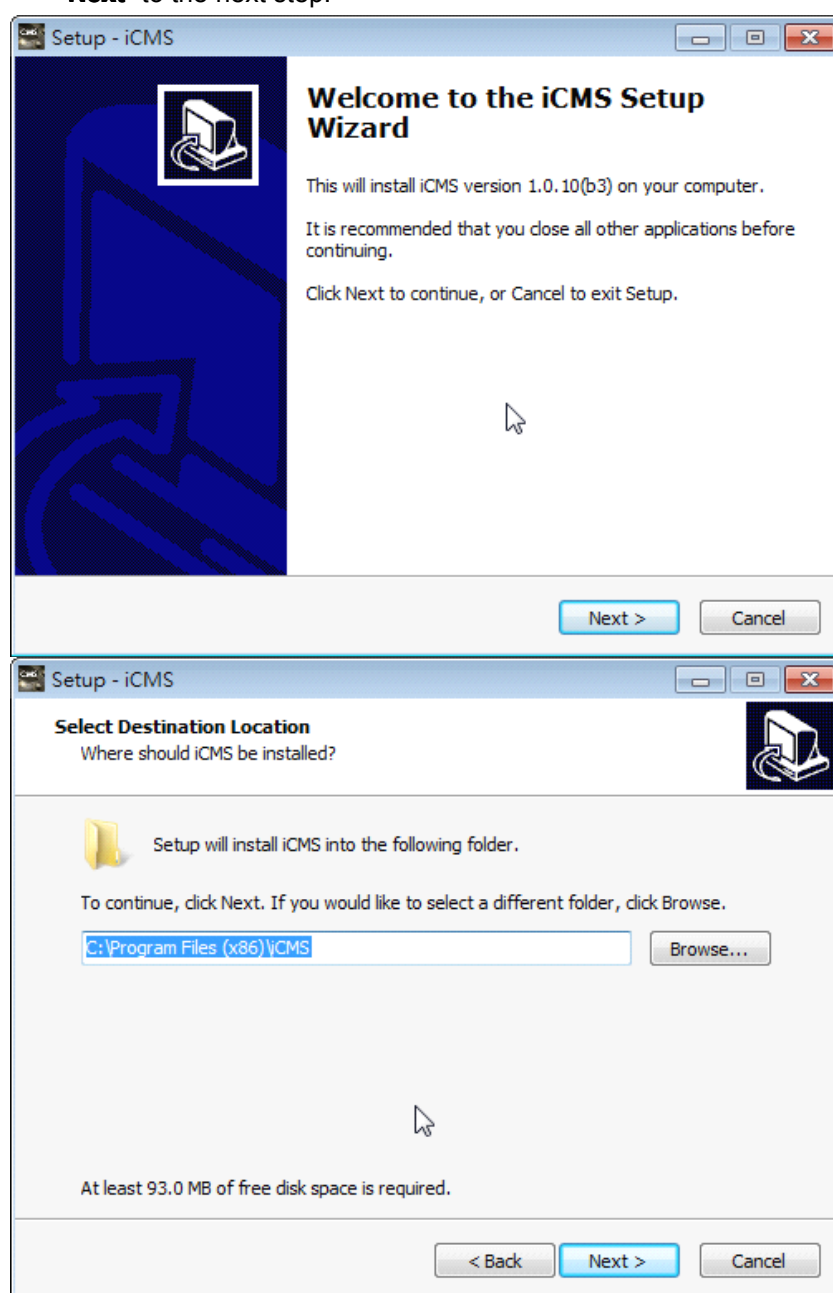
1-1 CMS Installation

System Requirement:

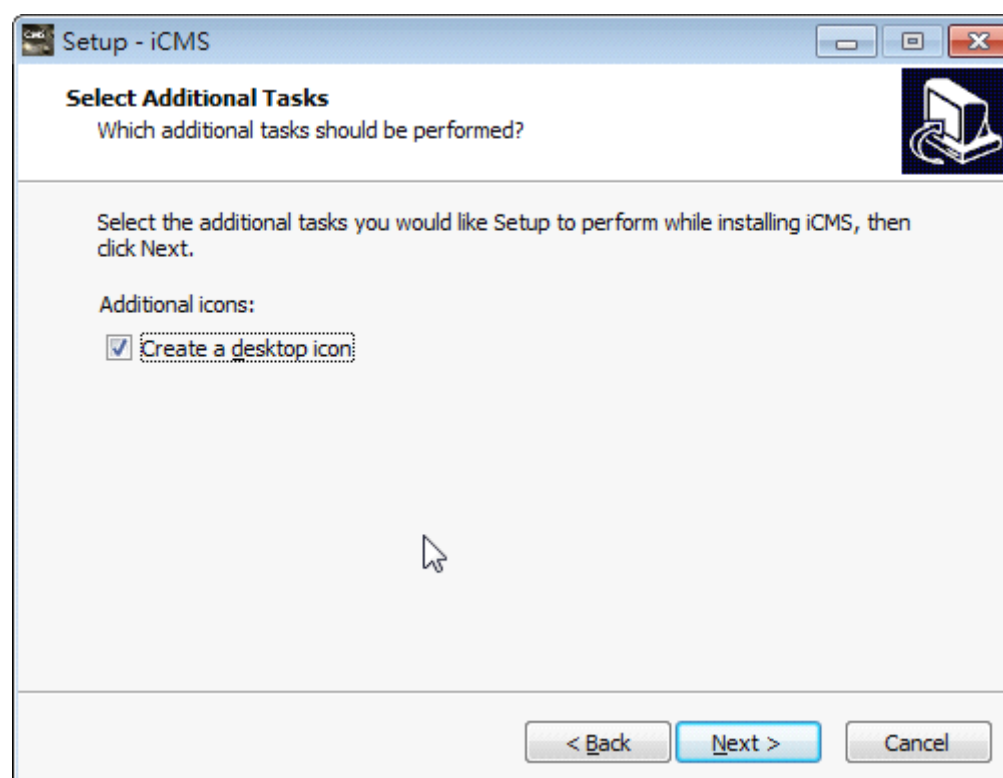
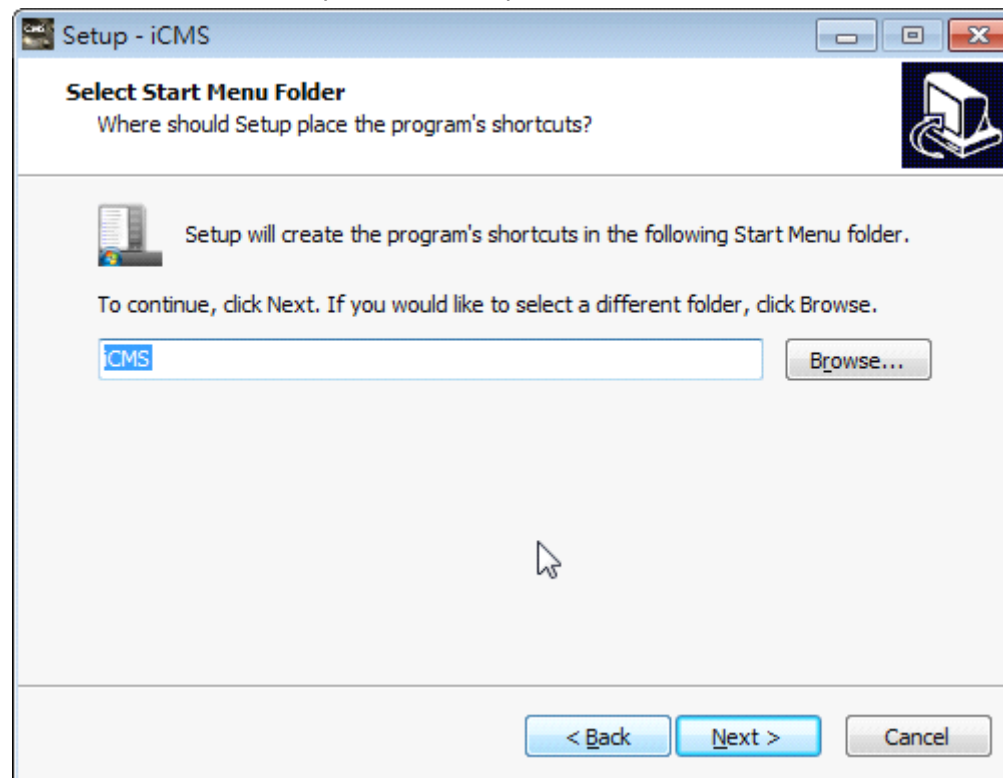
- * CPU: Intel Pentium 4 processor or higher.
- * OS: Microsoft Windows XP, Windows Vista, Windows 7, or Windows 2003 Server
- * RAM: 2GB required for the iCMS, besides OS and other required APs.
- * HDD space: 1GB HDD for program and extra space for recorded video and image.
- * VGA card support: Direct X9 is mandatory.

Installation:

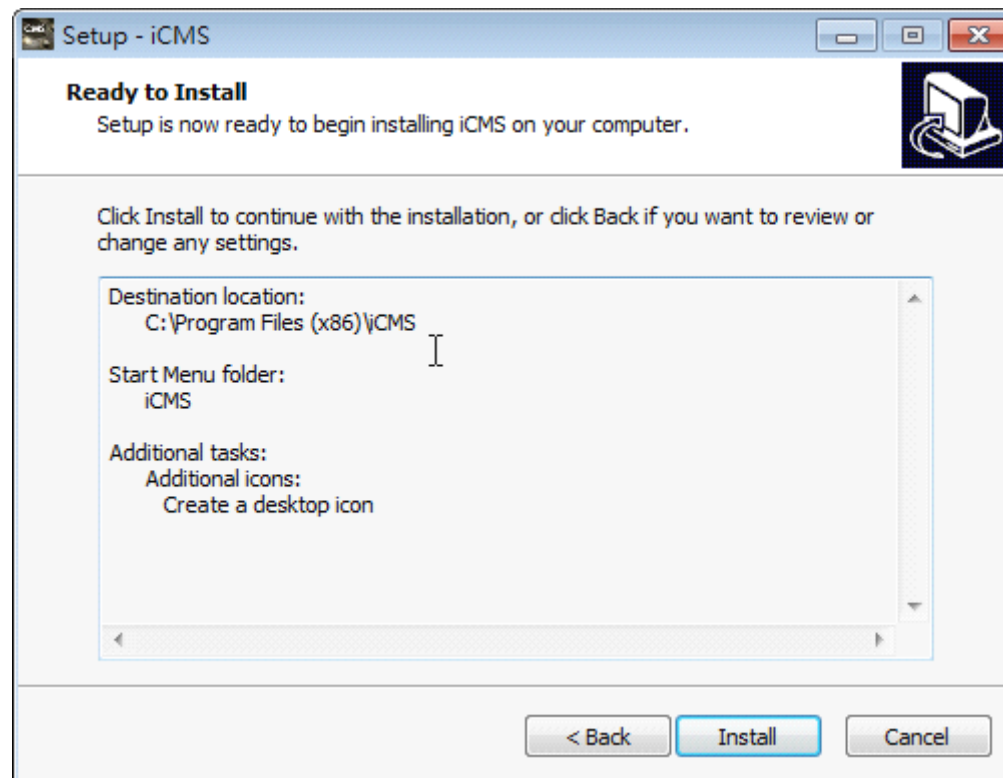
1. Execute "**setup.exe**".
2. Select "**Next**", and then select "**Browse**" to change installation path if needed. Select "**Next**" to the next step.



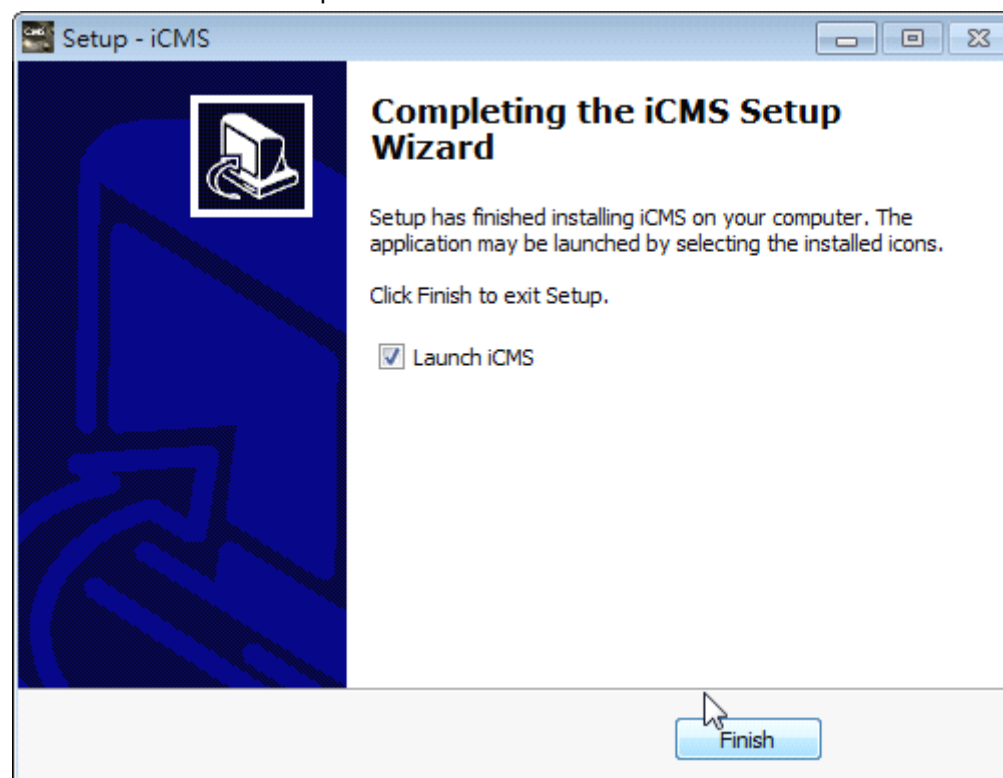
3. Programs can be set to a preferred Start Menu Folder, and choose whether to have a shortcut on the desktop. Confirm and press "Next"



4. Select 'Install' then the installation starts.

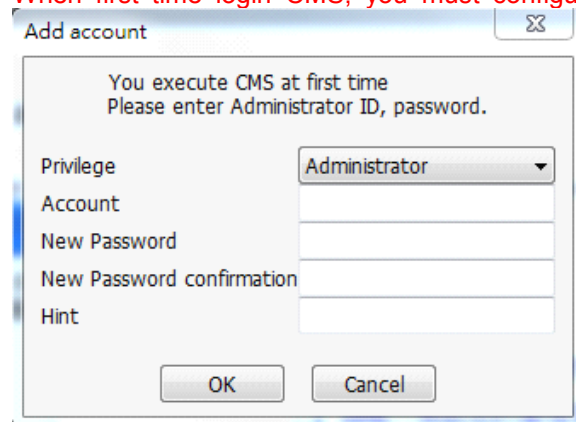


5. Installation is complete! Check the "Launch iCMS" to start the program. Press "Finish" to end the installation process.



1-2 Login and environment of CMS

When first time login CMS, you must configure account and password for administrator.



The 'Add account' dialog box is titled 'Add account' with a close button (X) in the top right corner. The main text inside says 'You execute CMS at first time' and 'Please enter Administrator ID, password.' Below this text are five input fields: 'Privilege' (a dropdown menu showing 'Administrator'), 'Account' (a text box), 'New Password' (a text box), 'New Password confirmation' (a text box), and 'Hint' (a text box). At the bottom are 'OK' and 'Cancel' buttons.

The user's permission (please select "system administrator")

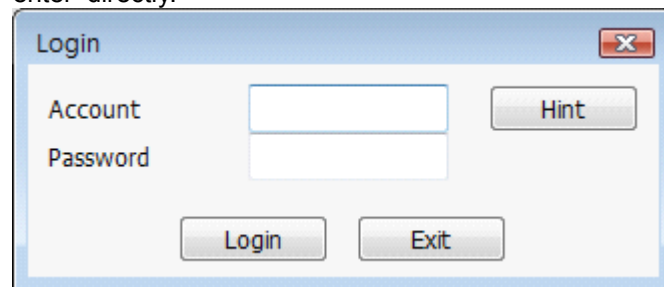
Please enter the administrator account

Please enter the administrator password

Confirm the administrator password

Hint input when forgetting your password

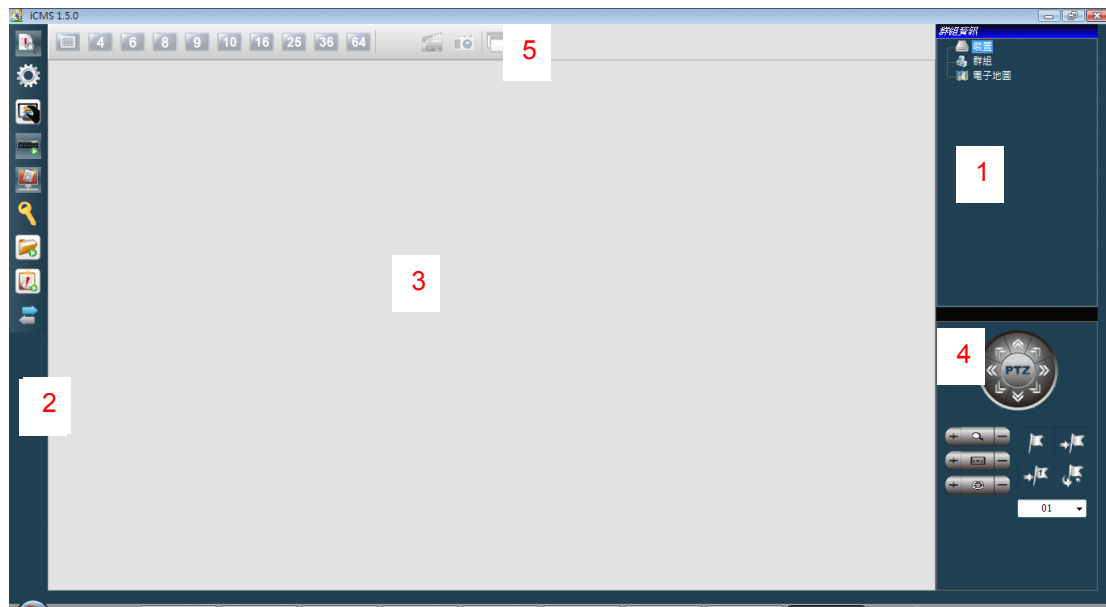
If the the username and password of administrator has been established, you can enter directly.



The 'Login' dialog box is titled 'Login' with a close button (X) in the top right corner. It contains two input fields: 'Account' and 'Password'. To the right of the 'Password' field is a 'Hint' button. At the bottom are 'Login' and 'Exit' buttons.

If you forget the password, you can click on the "Hint" button to display the prompt.

After login, the iCMS GUI will show as below and the GUI is composed of 5 main panes.



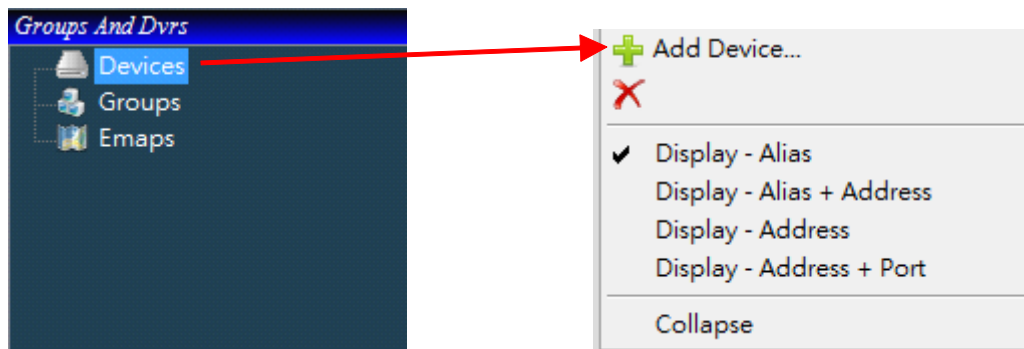
1.Devices, Groups, Emaps Pane	It supports “add”, “modify”, and “delete” the current device s, groups, emap in the iCMS. Refer to the chapter "Devices, groups, emaps."
2.Toolbar	It contains icons for “event”, “settings”, “snapshot”, “remote playback”, “remote download”, “file playback”, “event playback”, “import”, “export” etc. Refer to the chapter “Tool bar.”
3.Live view window	When CMS connects to a DVR, you can view live videos. Refer to the chapter "Live view window."
4.PTZ control panel	Control PTZ camera from this panel. Please refer to the chapter "PTZ control."
5.Split control panel	Set split screen., capture and record video.

1-3 Devices, Groups, Emaps Configuration

It supports add, modify, and delete the devices, groups, emap in CMS.

1-3.1 Devices

1.Add Device: Right-click on device icon and click "Add Device" in the following screen.

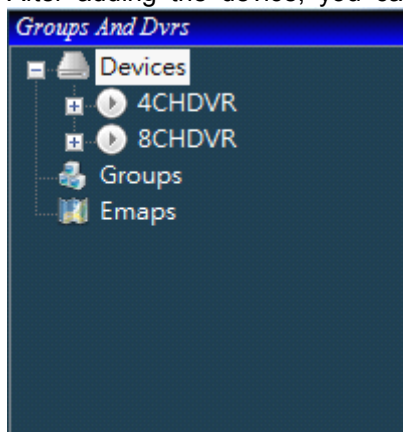


Enter the following informations in sequence. After the input is complete, click "Add" to close this window. Press "Cancel" or the upper right corner of the "X" to close window.

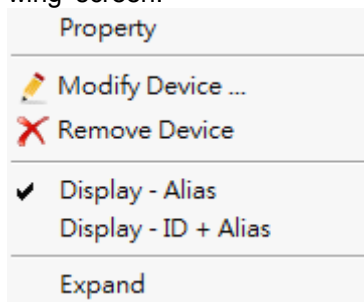
The image shows a dialog box titled "Add Device" with a close button (X) in the top right corner. The dialog box contains five input fields: "Address" with the value "192.168.1.150", "Port" with the value "80", "Device Alias" with the value "4CHDVR", "Account" with the value "admin", and "Password" with a masked password (represented by black dots). At the bottom of the dialog box are two buttons: "Add" and "Cancel". To the right of the dialog box, there are five lines of text in blue, each corresponding to an input field: "Input DVR IP address", "Input DVR HTTP port", "Input DVR Alias", "Input DVR login account", and "Input DVR login password".

PS: If more than one DVR device data need to be input, please repeat the above steps.

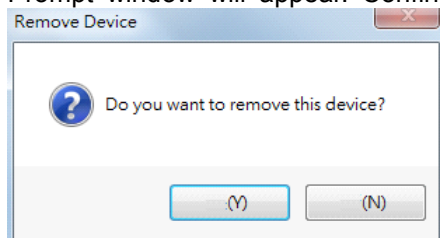
After adding the device, you can see the DVR device name in menu list.



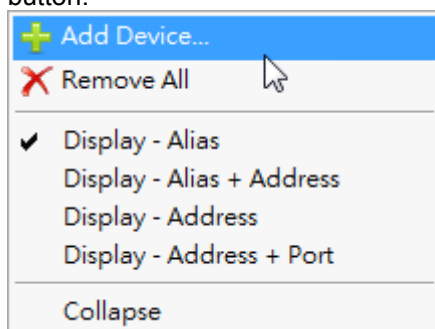
2.Remove device: Right-clicking the device name and click "Remove Device" in the following screen.



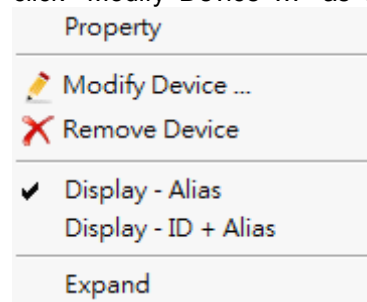
Prompt window will appear. Confirm the deletion, press "Yes", to cancel press "No."



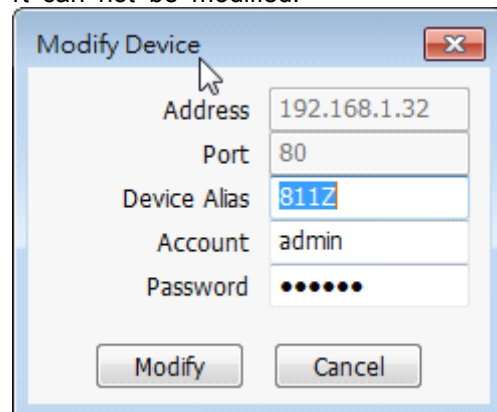
To delete all DVR devices, you can right-click the device icon and click "Remove All" button.



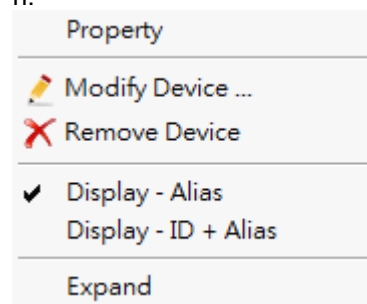
3.Change device name: To modify the device name, you can right-click the device and click "Modify Device ..." as the following screen.



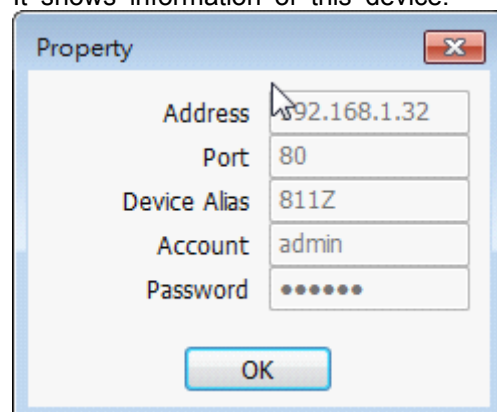
You can modify the device alias, login account, and password here. IP address and port can not be modified.



4.DVR property: Right-click the device name and click "Property" in the following screen.

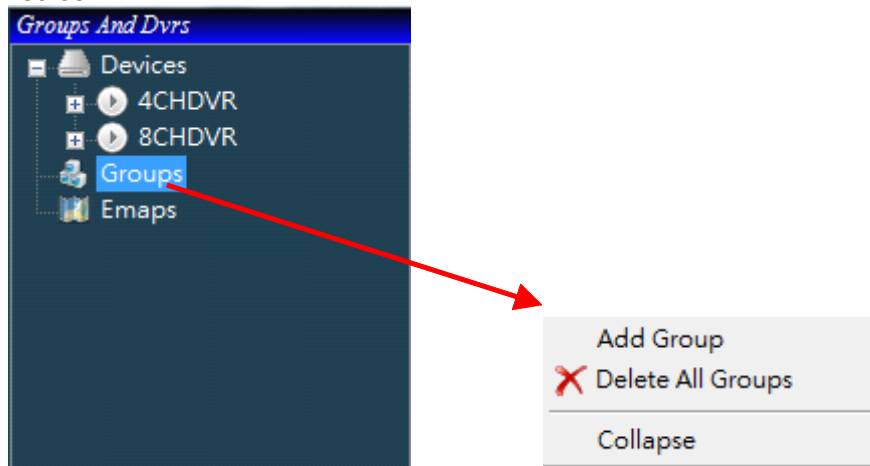


It shows information of this device.



1-3.2 Groups

1.Add Groups: Right-click on the group icon and click "Add Group" as the following screen.



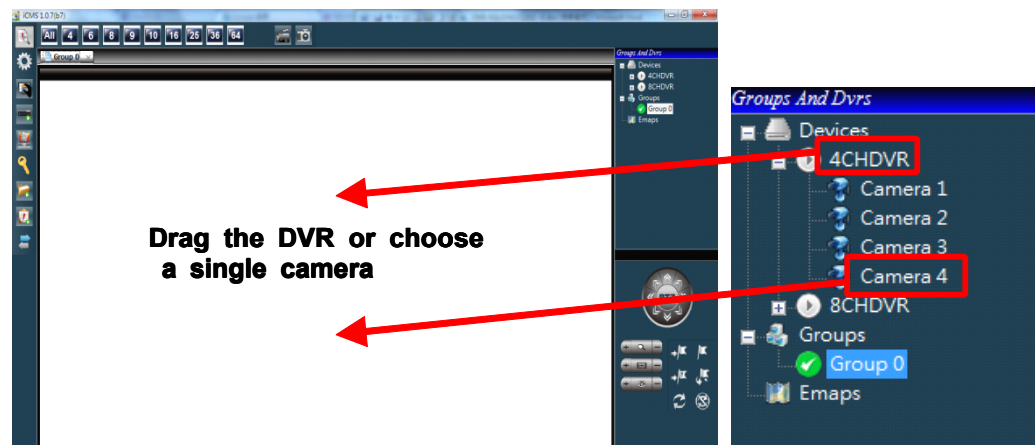
The system will automatically bring up a group name, and modify the name to a preferred group name and press "Enter".



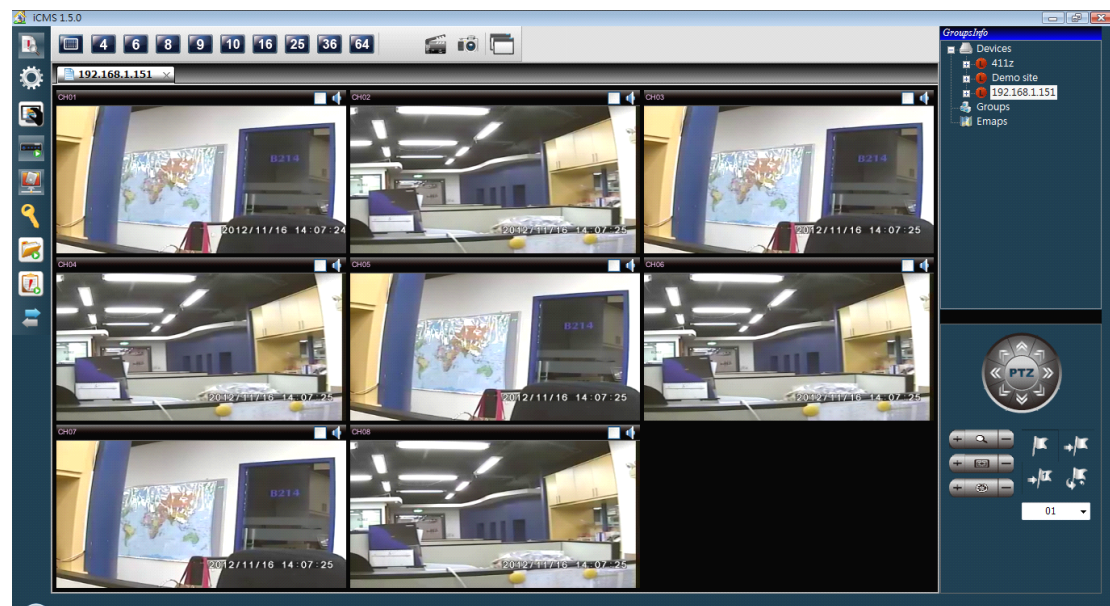
Double click the group name, the system will show a new monitor screen and create a new tab on the screen for this group.



Drag and drop DVR or camera of this group to the monitor screen.

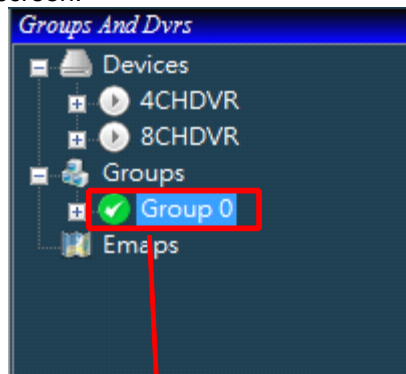


The system displays cameras in the order of camera addition. The order cannot be rearranged but you may delete the camera which you do not want to display.

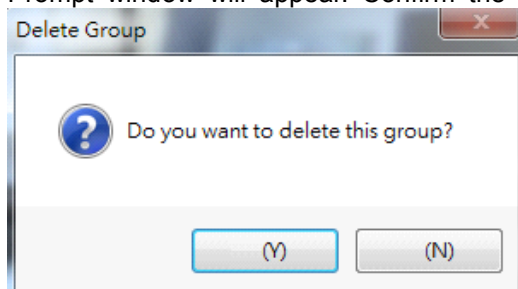


PS. If more than one group to be input, please repeat the above steps.

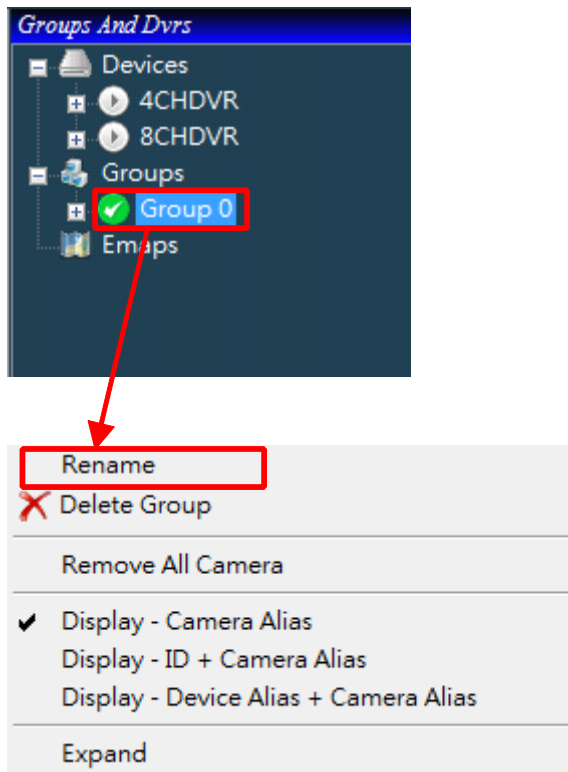
2.Delete Group: Right-click the group name and click "Delete Group" in the following screen.



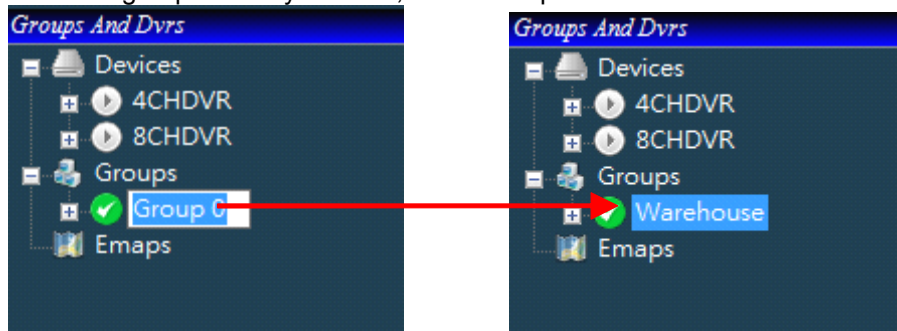
Prompt window will appear. Confirm the deletion, press "Yes", to cancel press "No."



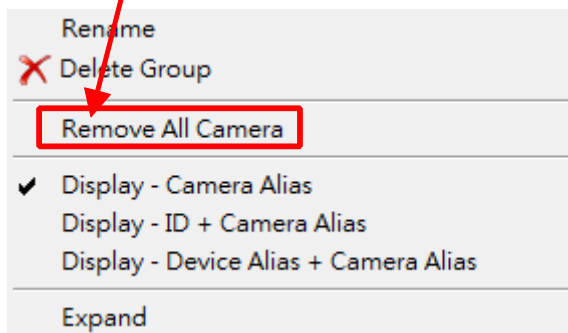
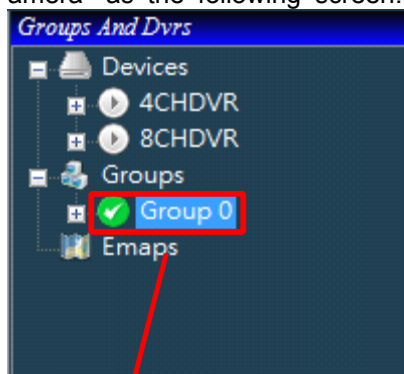
3.Rename Group: Right-click the group name and click "Rename" in the following screen.



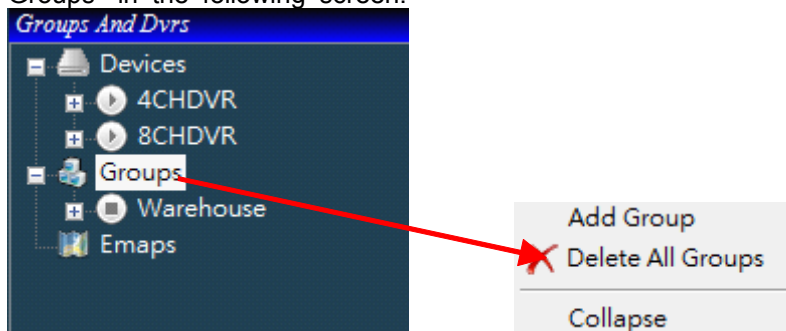
Enter the group name you want, and then press "Enter."



4.Remove all cameras of a group: Right-click the group name and click "Remove All C
amera" as the following screen.

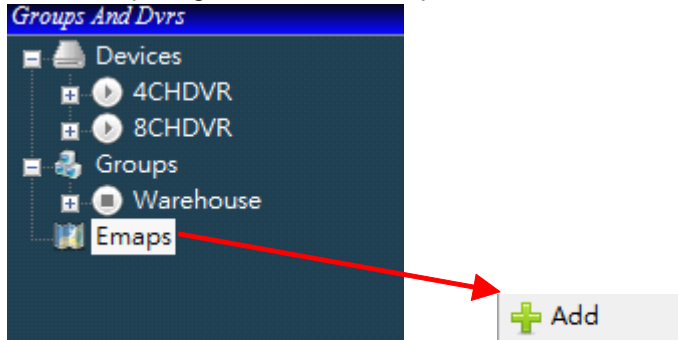


5.Delete all groups: To delete all groups, right-click the "Groups" and click "Delete All
Groups" in the following screen.

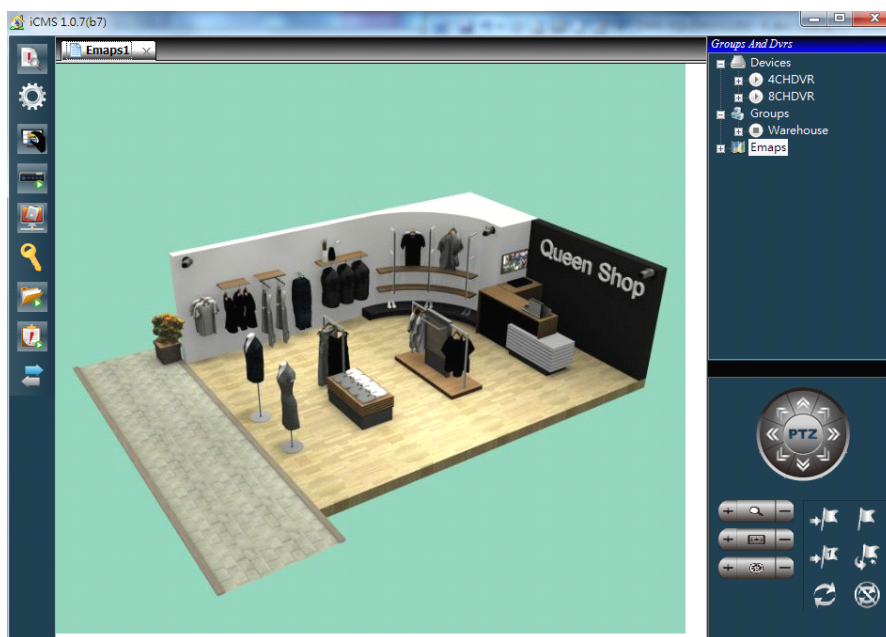
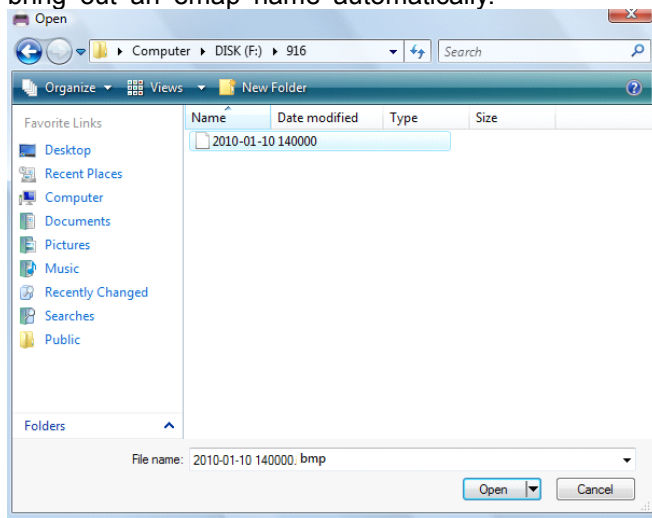


1-3.3 Emaps

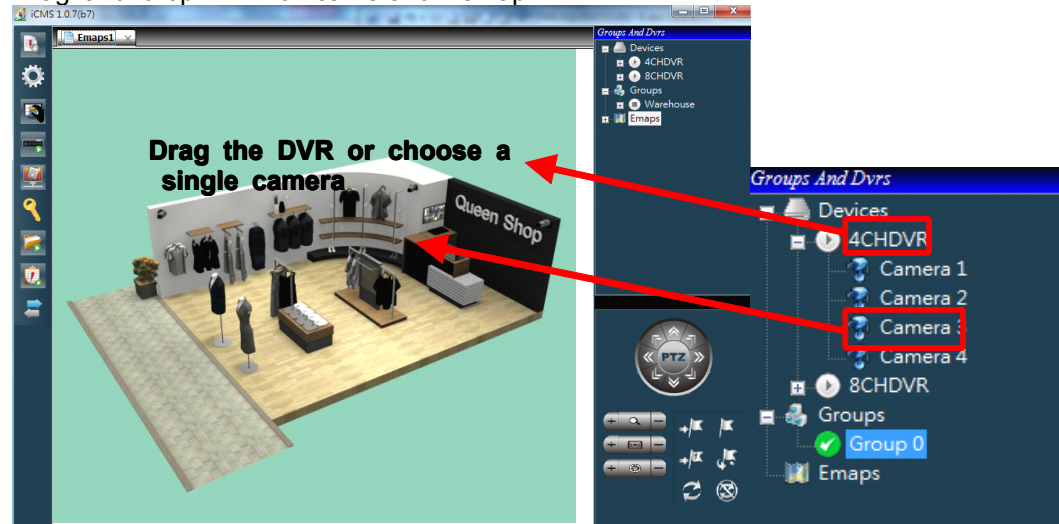
1.Add Emap: Right-click the “Empas” and click "Add" in the following screen.



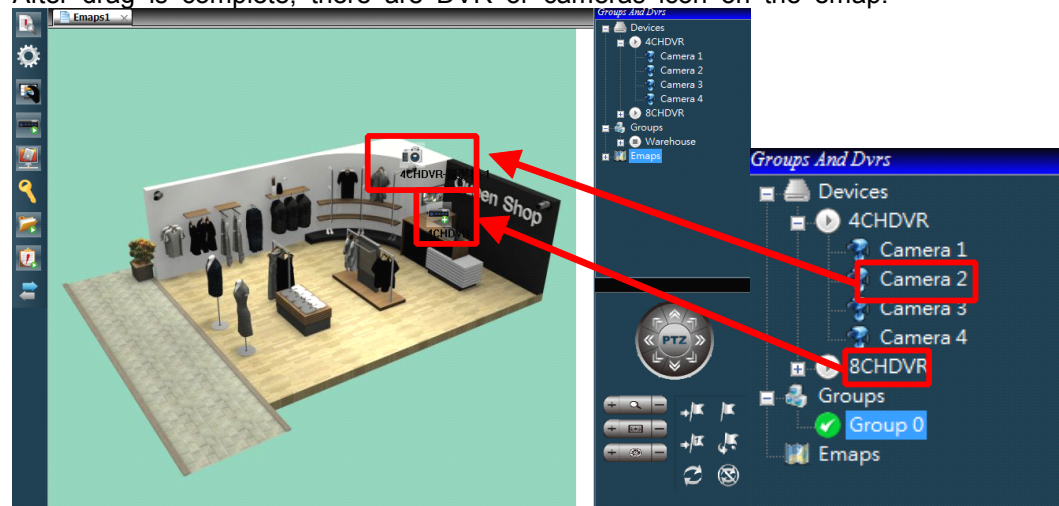
First, you select the image for emap. Confirm by “Open, and then the system will bring out an emap name automatically.



Drag and drop DVR or camera on emap.

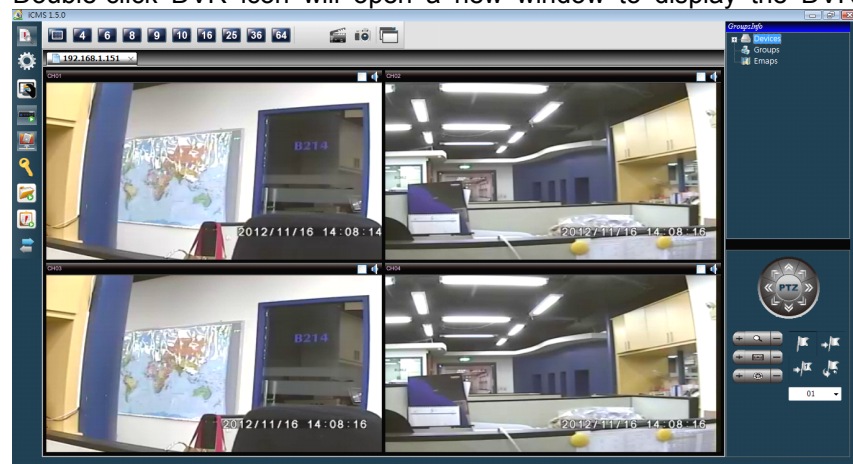


After drag is complete, there are DVR or cameras icon on the emap.

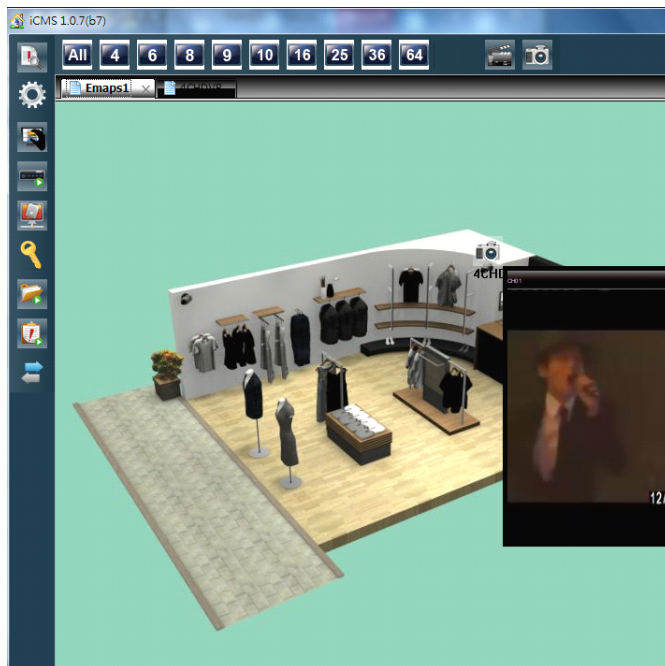


PS. If more than one emap data to be input, please repeat the above steps.

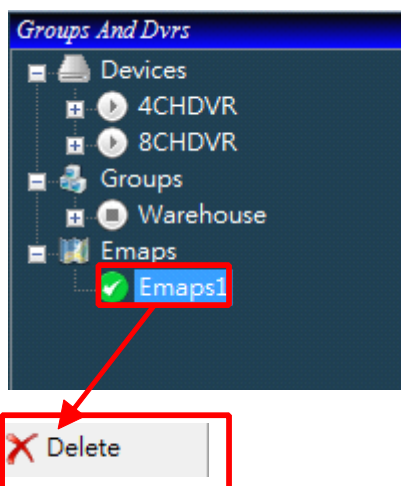
Double-click DVR icon will open a new window to display the DVR video.



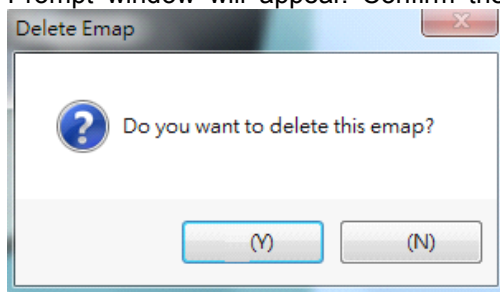
Double-click camera icon will open a new window to display the camera video.









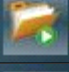
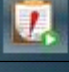

2.Delete emap: Right-click the emap name and click "Delete" in the following screen.



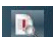
Prompt window will appear. Confirm the deletion, press "Yes", to cancel press "No."

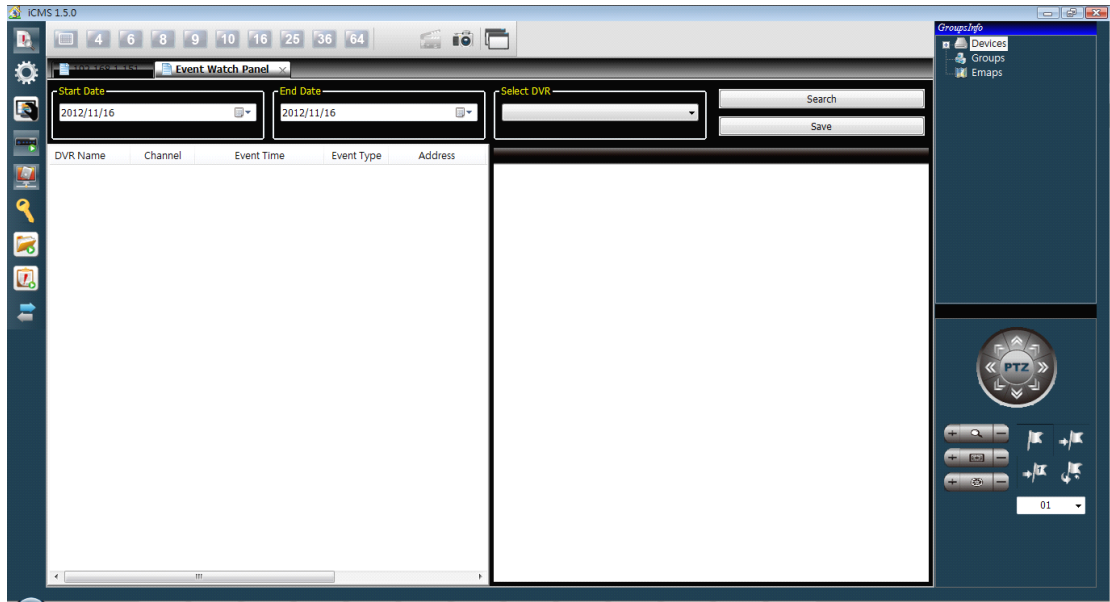


1-4 Toolbar

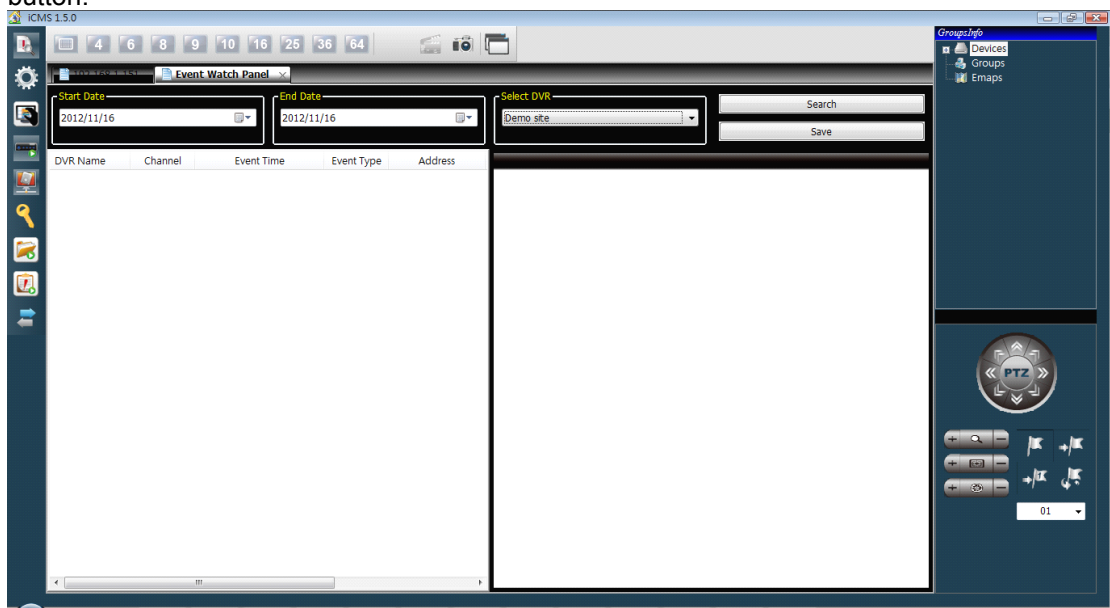
Icon	Information
	Show event watch panel: Search DVR event and export the log file.
	Show Preferences Dialog: Configure CMS settings.
	Snapshot: View the snapshot from DVR or CMS.
	Remote Play: Play the video file on a remote DVR.
	Remote Download Plugin Toolbar: Download video files from a remote DVR.
	Permission: Configure the access previledge of users.
	File Play: Play the DVR video files from local HDD or USB flash drive on the PC which iCMS is running.
	Event Play: Play event video files of a DVR.
	Import/Export Configure file: Import/Export configureation file of CMS.

1-4.1 Show event watch panel

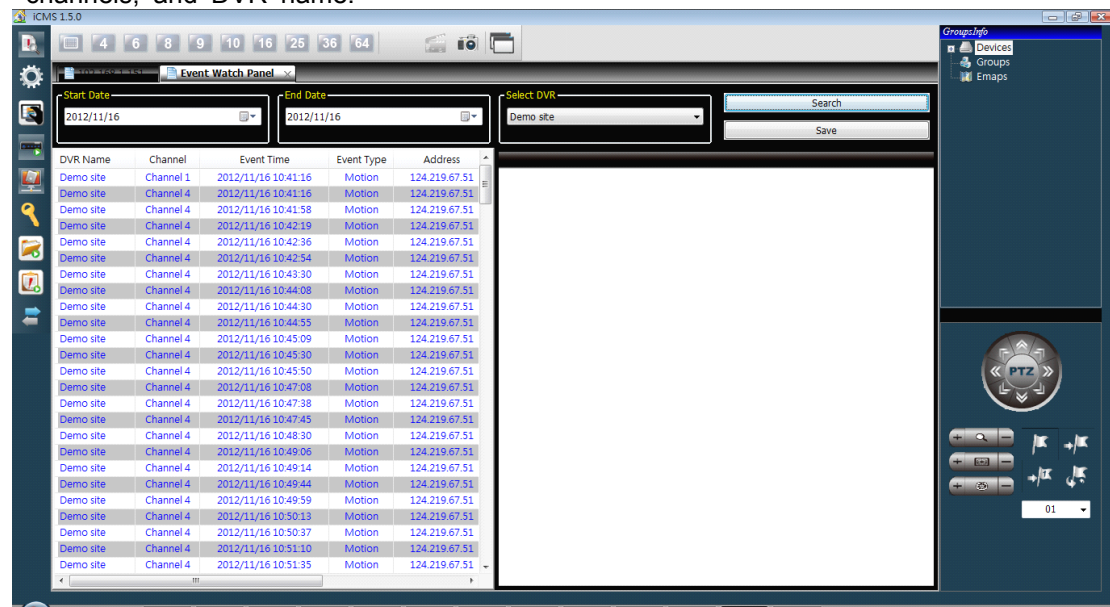
Users can search the DVR event and save as log file.
Left-click  , it shows the event panel.



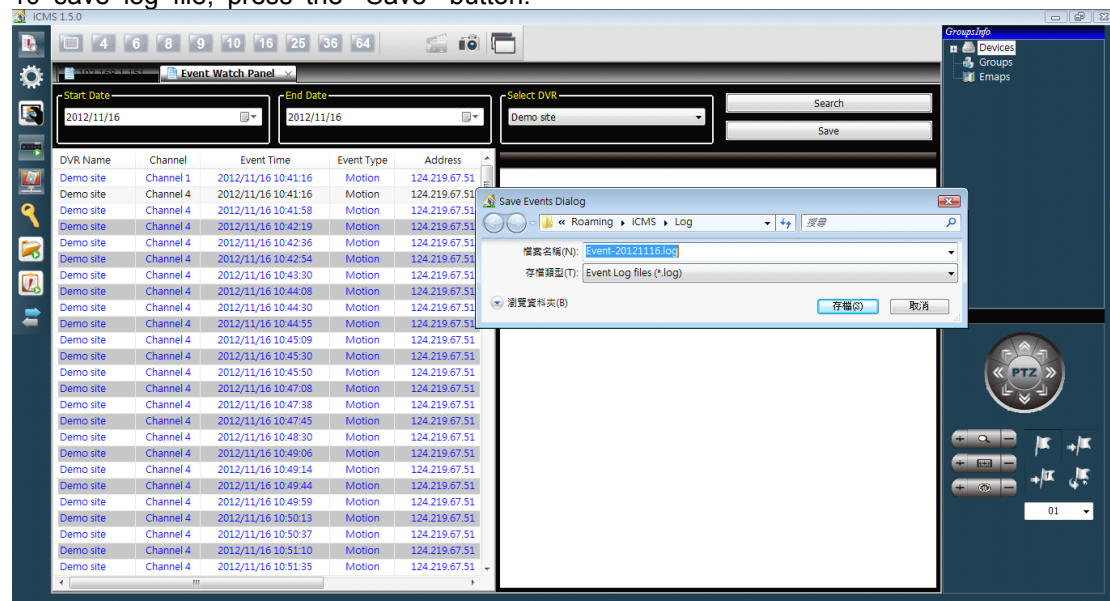
Select the start date, end date, and DVR (one or all), and then press "Search" button.



It shows recorded historical events, including IP address, time of the event, event type, channels, and DVR name.

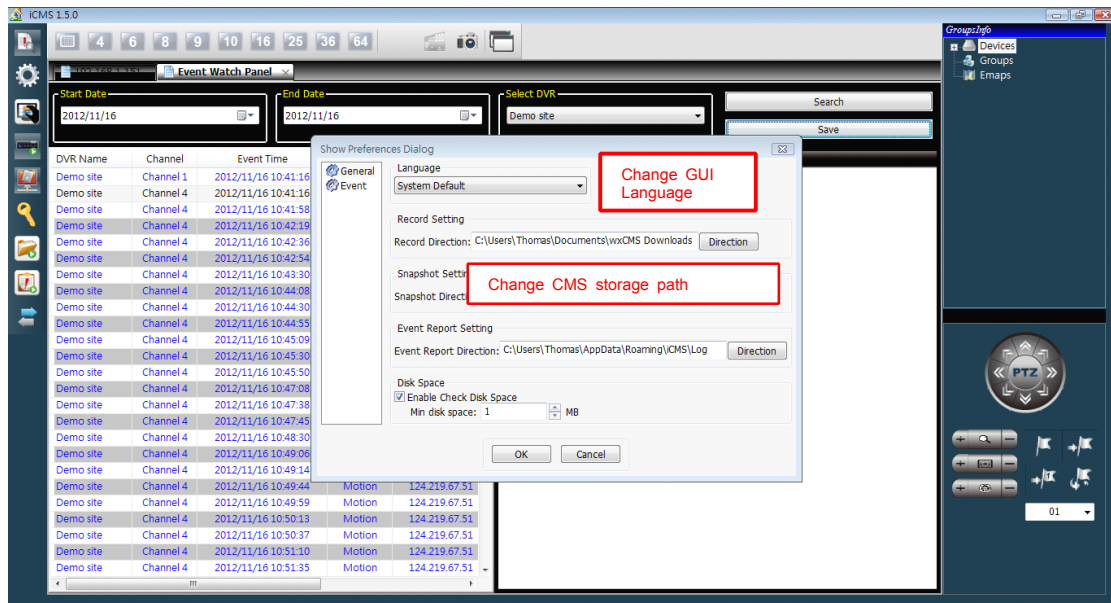


To save log file, press the "Save" button.

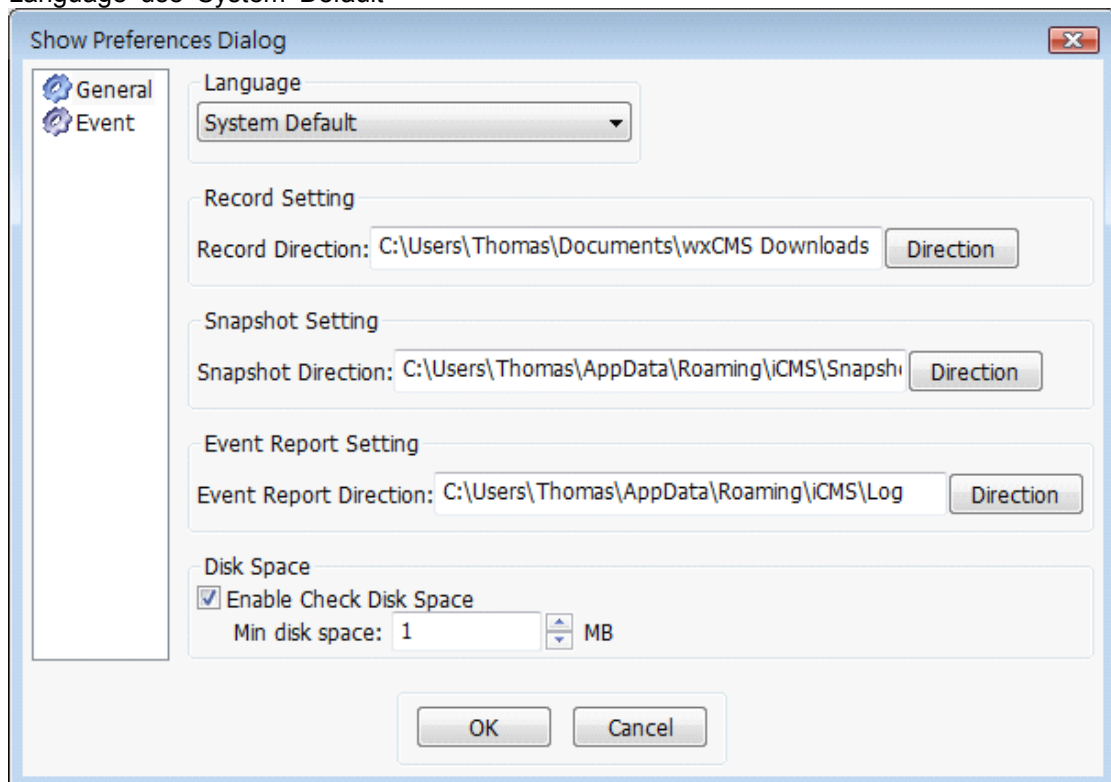


1-4.2 Show Preferences Dialog

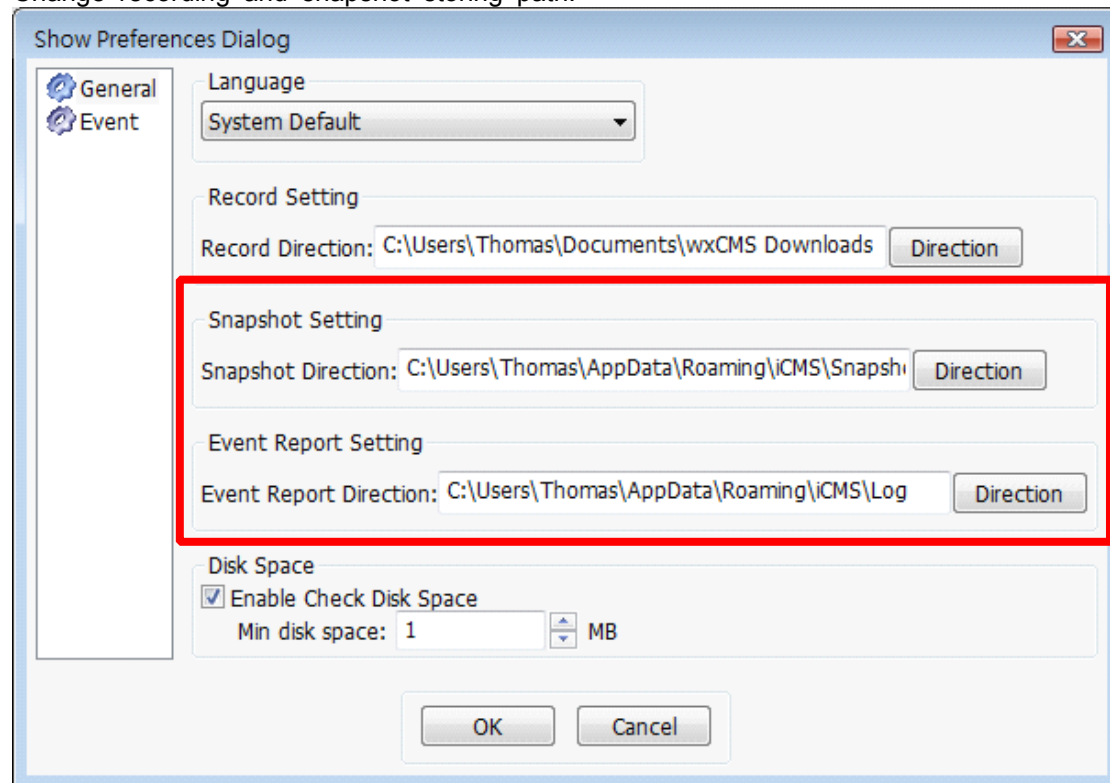
Click  and the preferences window be shown.



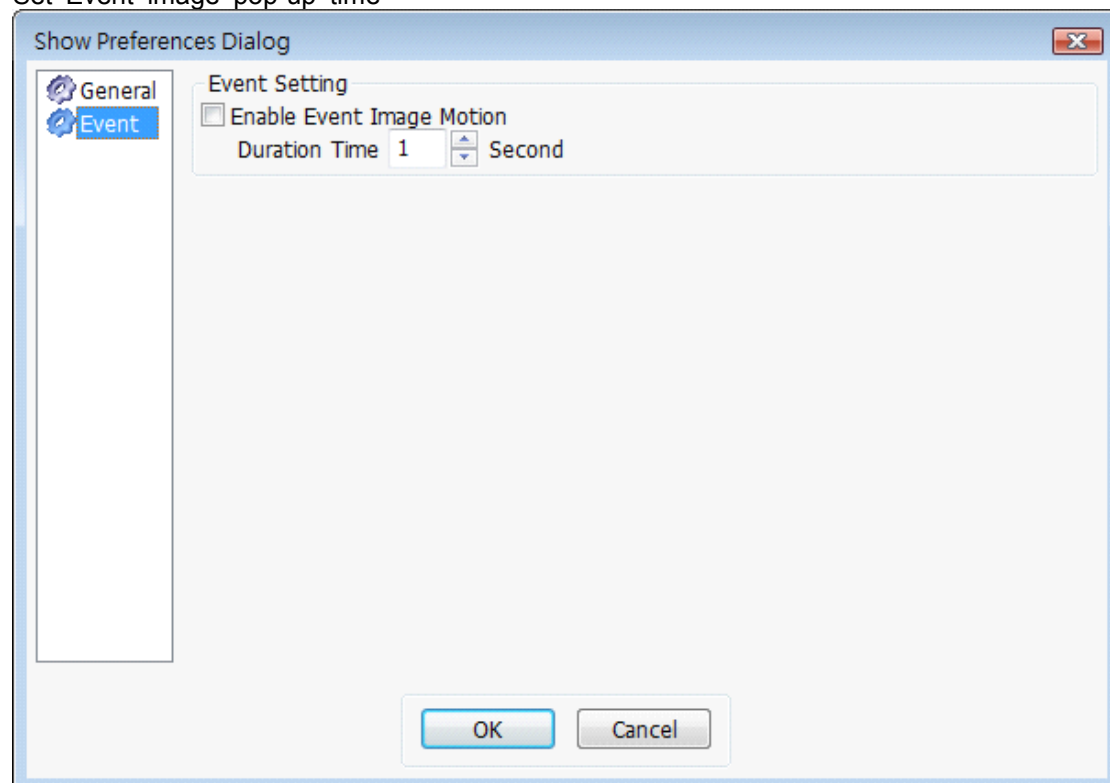
Language use System Default



Change recording and snapshot storing path.

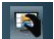


Set Event image pop-up time

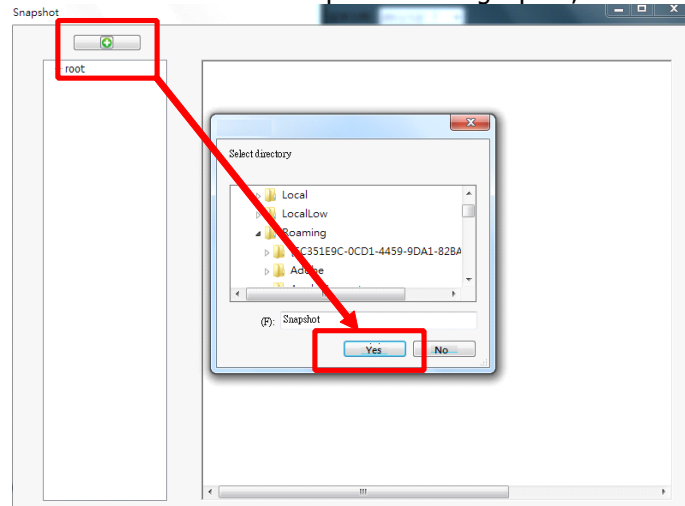


1-4.3 Snapshot

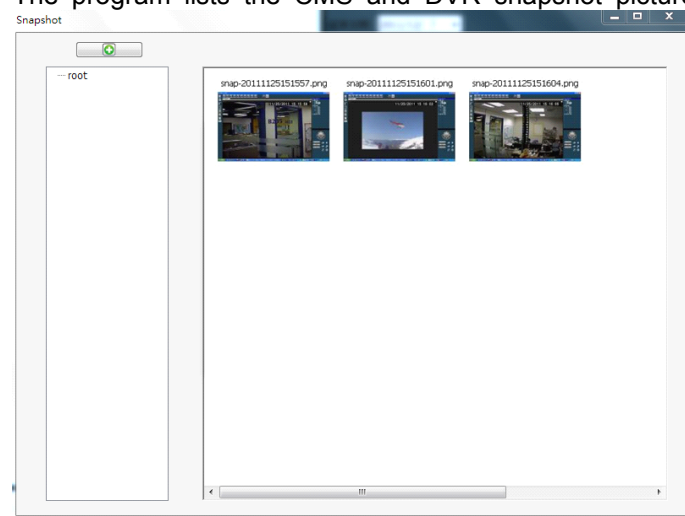
To watch DVR or CMS captured image files.

Left-click  , it shows snapshot panel.

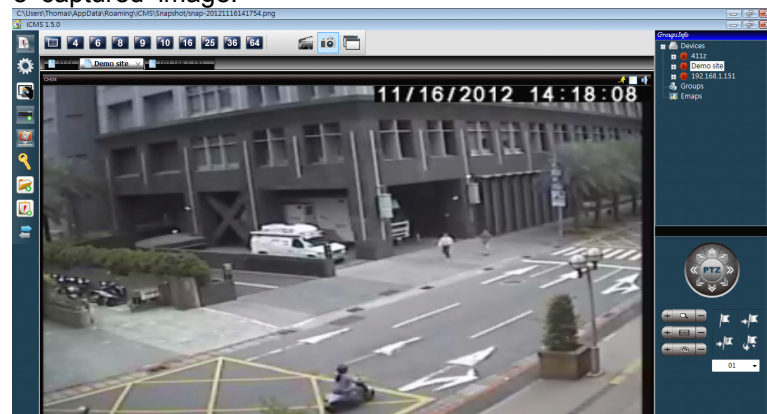
Click the "+" button to open the image path, and then press "Yes."



The program lists the CMS and DVR snapshot picture files automatically.

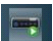


Click the left mouse button twice on the picture you want to view, and you can see the captured image.

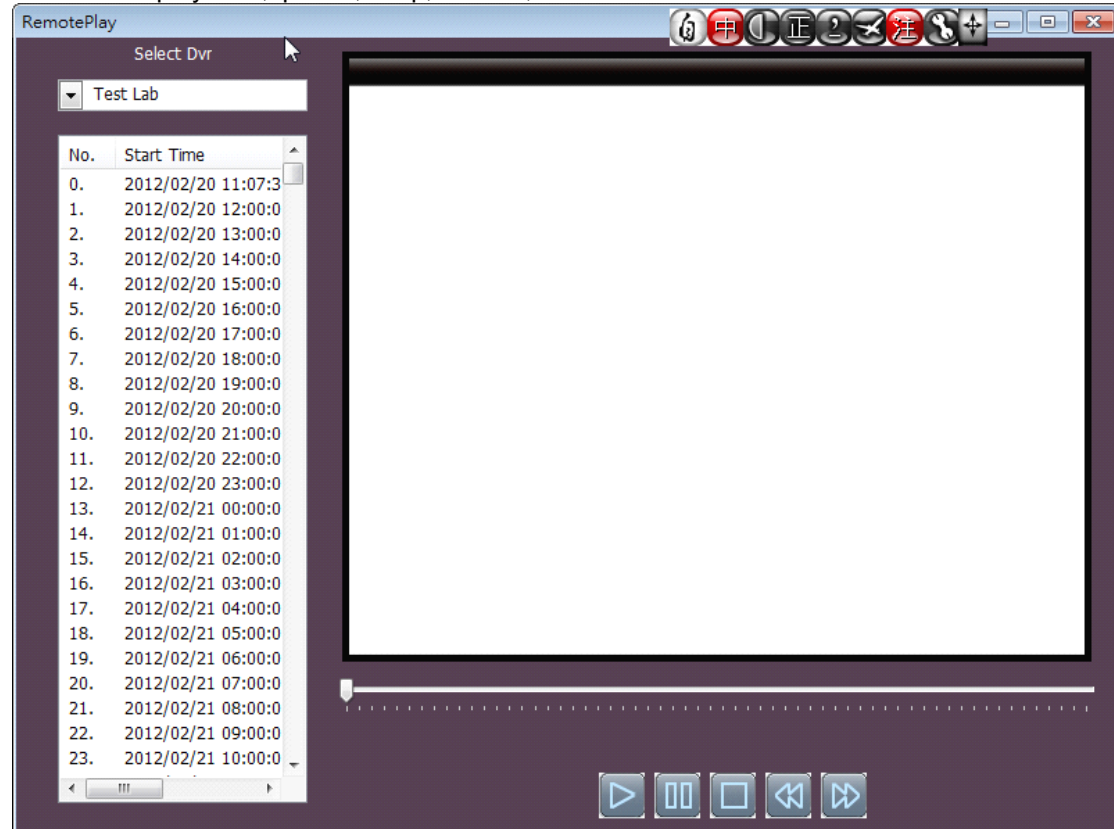


1-4.4 Remote Play

Users can play the recorded videos from DVR.

Left-click , it shows remote playback panel.

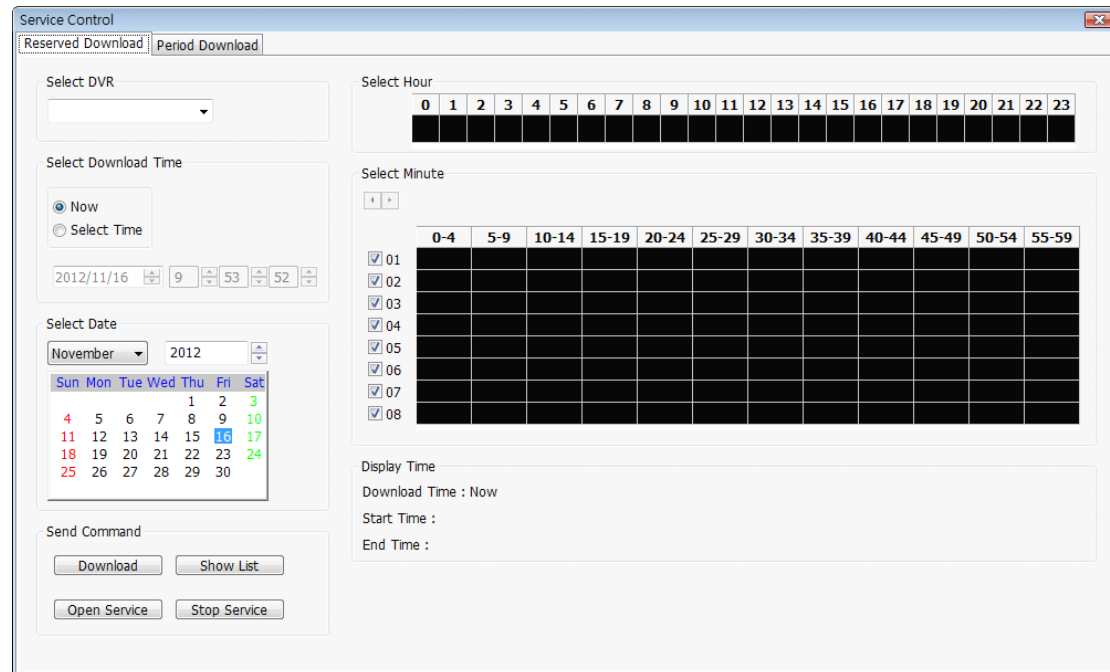
Select the DVR you want to play, and the system will list available video clips. Double-click a clip will play the selected video clip. You can also use the button at the bottom to playback, pause, stop, rewind, and fast forward.



1-4.5 Remote Download Plugin Toolbar

It is for downloading the recorded video files of DVR to the PC.

Click  , the remote download panel will pop up.

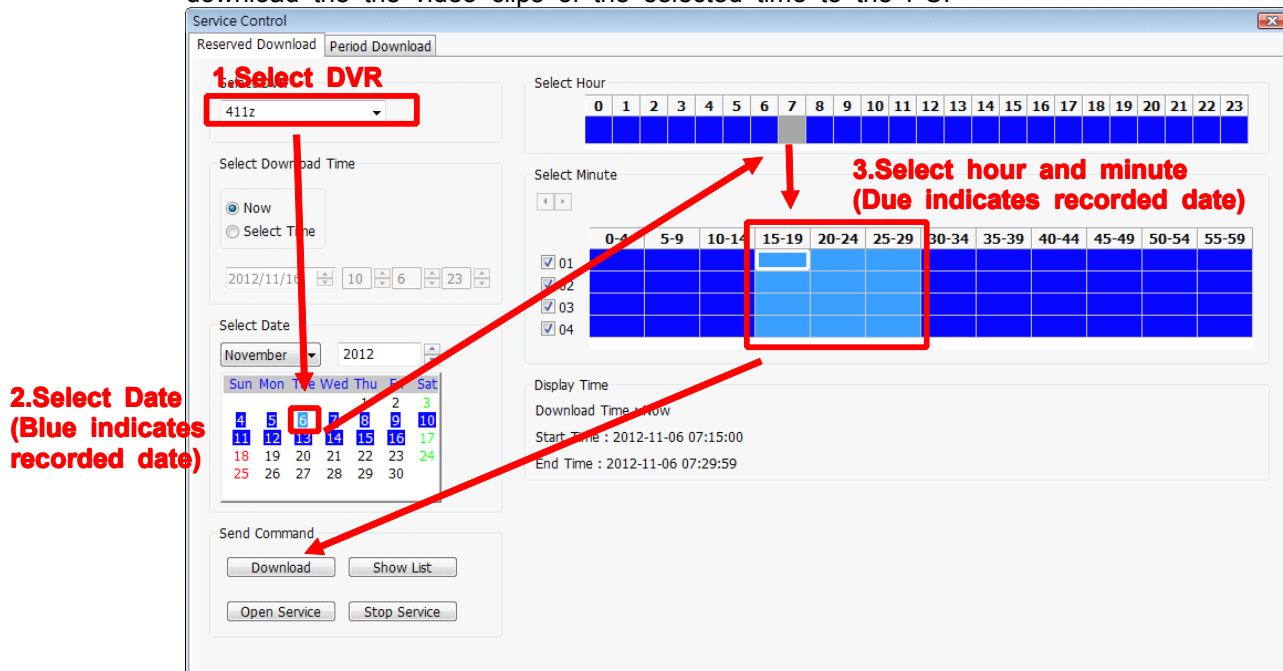


The screenshot shows the 'Service Control' window with the 'Period Download' tab selected. It contains several sections for configuring a download:

- Select DVR:** A dropdown menu.
- Select Download Time:** Radio buttons for 'Now' (selected) and 'Select Time'. Below are date and time pickers for 2012/11/16 at 09:53:52.
- Select Date:** A calendar for November 2012. The 16th is highlighted in blue.
- Select Hour:** A row of buttons for hours 0-23. The 7th button is highlighted in blue.
- Select Minute:** A grid of buttons for minutes in 5-minute intervals (0-4 to 55-59). The 15-19 interval is highlighted in blue.
- Display Time:** Fields for 'Download Time : Now', 'Start Time :', and 'End Time :'. The start and end times are currently empty.
- Send Command:** Buttons for 'Download', 'Show List', 'Open Service', and 'Stop Service'.

Choose the DVR to download, the DVR will list the date information of available recorded video in the Date, hour and minute (appear blue) automatically.

After selecting the recorded range and pressing download, the system will begin to download the the video clips of the selected time to the PC.



This screenshot is identical to the previous one but includes red annotations and arrows indicating the selection process:

- 1. Select DVR:** An arrow points to the '411z' dropdown menu.
- 2. Select Date (Blue indicates recorded date):** An arrow points to the '16' on the calendar.
- 3. Select hour and minute (Blue indicates recorded date):** An arrow points to the '7' hour button and the '15-19' minute interval button.

The 'Download' button in the 'Send Command' section is also highlighted with a red box.

Period Download

- 1.Select DVR
- 2.Select Download Time
- 3.Set download period time.

After selecting the record range and pressing download, the system will download the the video clips of the selected time to the PC.

1.Select DVR

2.Download time

3.When you set Start(S) , they will show S; Set End(E), , they will show E

Service Control

Reserved Download Period Download

4112

Select Date

Saturday	Sunday	Monday	Tuesday	Wednesday	Thursday	Friday
S				E		

Select Download Time

Friday 12:04 21:00

Download Time Data

Start Select Start(S)

End Select End(E)

Range Select New

Send Command

Download Show List

Open Service Stop Service

Select Hour

0	1	2	3	4	5	6	7	8	9	10	11	12	13	14	15	16	17	18	19	20	21	22	23

Select Minute

0-4	5-9	10-14	15-19	20-24	25-29	30-34	35-39	40-44	45-49	50-54	55-59
<input checked="" type="checkbox"/> 01											
<input checked="" type="checkbox"/> 02											
<input checked="" type="checkbox"/> 03											
<input checked="" type="checkbox"/> 04											

Display Time


Download Time : Friday-12:04:21

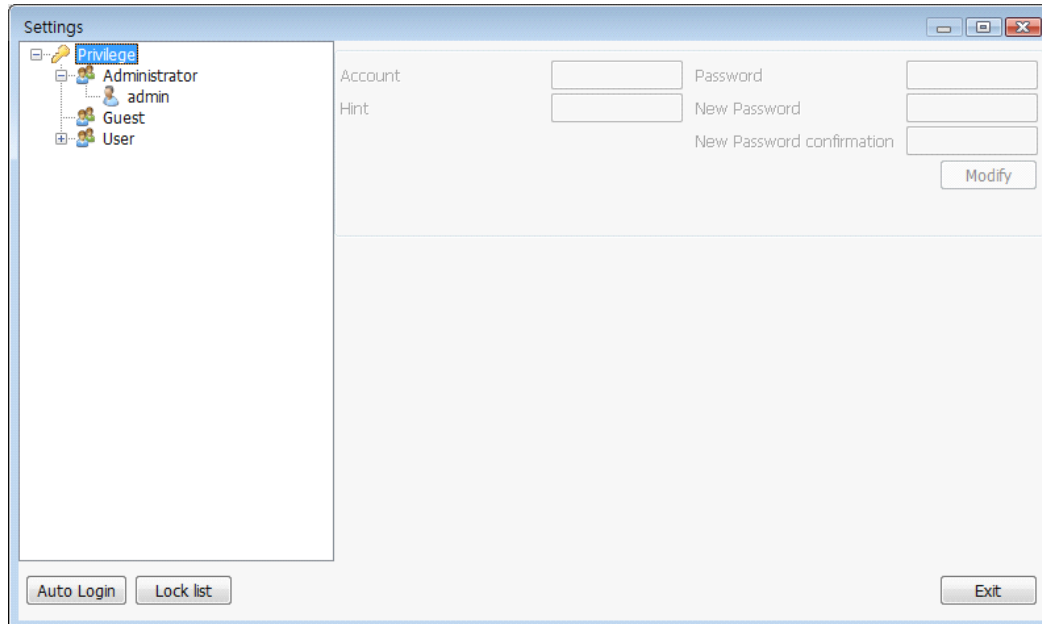
Start Time : Saturday-05:20:00

End Time : Wednesday-13:34:59

1-4.6 Permissions

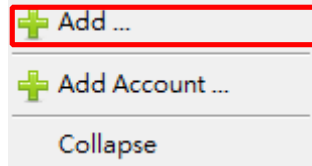
Configure CMS users's permissions.

Left-click  , it shows permission privilege setting window.

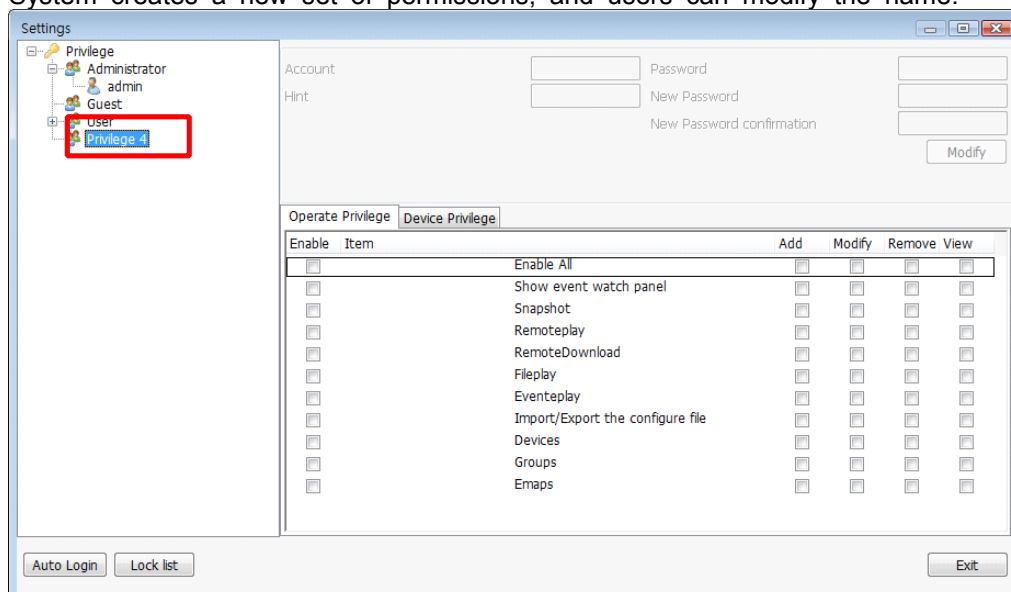


1.Add permissions :

Right-click on the Privilege and click "Add."

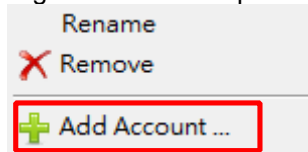


System creates a new set of permissions, and users can modify the name.



2.Add account : Add account

Right-click on the permissions and click "Add Account."



"Add account" screen appears, and you can configure user permissions and the username and password.

A dialog box titled 'Add account' with a close button (X). It contains the following fields: 'Privilege' (a dropdown menu showing 'Privilege 4'), 'Account' (a text input field), 'New Password' (a text input field), 'New Password confirmation' (a text input field), and 'Hint' (a text input field). At the bottom are 'OK' and 'Cancel' buttons.

The user's permission (select "system administrator" or "user")

Please enter the account

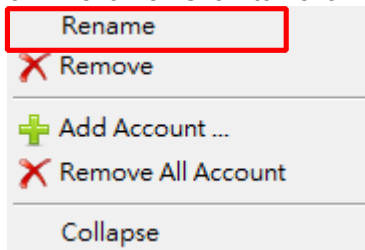
Please enter the password

Confirm the password

Hint input when forgetting your password

3. Permissions Management: After adding permissions and accounts, you can right-click on the name of the permission to edit.

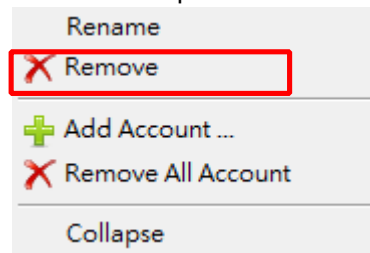
3-1 Rename: Click to rename the permission's name(or Press F2).



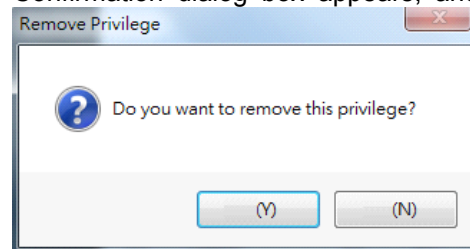
Enter a new name and press Enter.

A screenshot of the 'Settings' window. On the left, a tree view shows 'Privilege' expanded, with 'Administrator', 'admin', 'Guest', 'User', and 'Privilege 4' listed. 'Privilege 4' is highlighted with a red rectangular box. On the right, the 'Operate Privilege' tab is active, showing a table of permissions. The table has columns: 'Enable', 'Item', 'Add', 'Modify', 'Remove', and 'View'. The 'Item' column lists various permissions like 'Show event watch panel', 'Snapshot', 'Remoteplay', etc. At the bottom, there are buttons for 'Auto Login', 'Lock list', and 'Exit'.

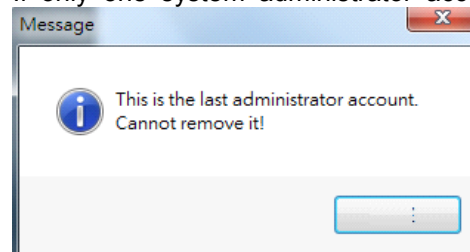
3-2 Remove permissions : Click 'Remove' to remove this permission privilege.



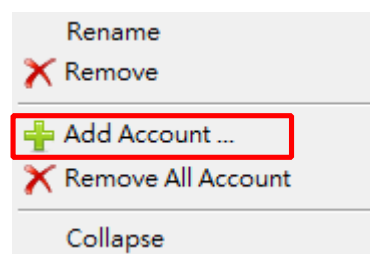
Confirmation dialog box appears, and press Yes to delete, No to cancel.



If only one system administrator account left, then this account can not be deleted.



3-3 Add account : Click to add an account.

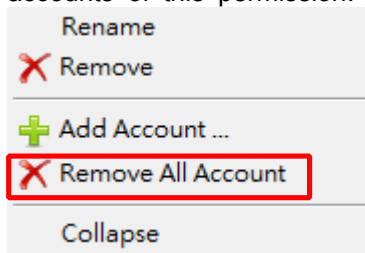


New Account screen appears, and users can set user permissions and the username and password.

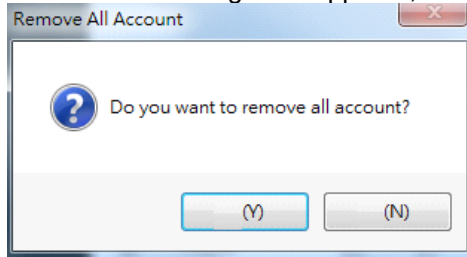
A screenshot of the 'Add account' dialog box. It has a blue header bar with the title 'Add account' and a close button. The main area contains a 'Privilege' dropdown menu set to 'Privilege 4', and four text input fields labeled 'Account', 'New Password', 'New Password confirmation', and 'Hint'. At the bottom, there are 'OK' and 'Cancel' buttons.

The user's permission
Please enter the account
Please enter the password
Confirm the password
Hint input when forgetting your password

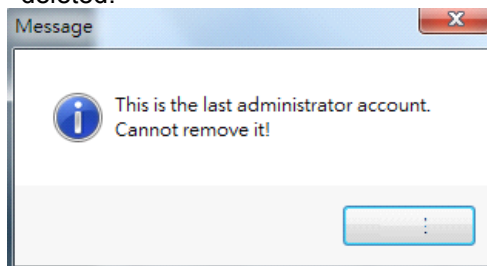
3-4 Remove All Account under the same permission privilege: click to remove all accounts of this permission.



Confirmation dialog box appears, and press Yes to delete, No to cancel.

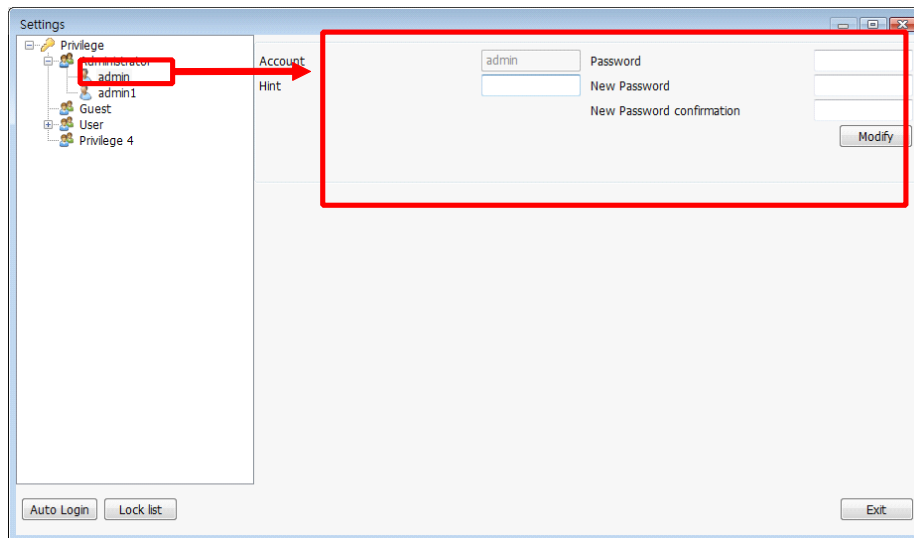


If there is only one administrator account existed in the iCMS, this account can not be deleted.



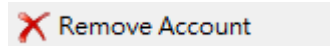
4 Account management: After adding user account, you can click to change the password or delete.

4-1 Edit Account: Right click the user name, you can modify the password and hint.

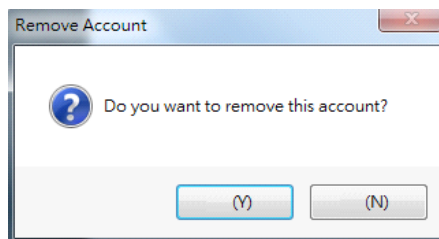


Press the “Modify” button to change.

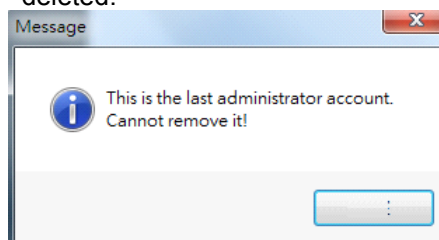
4-2 Remove the account: Right-click the user name to remove this account.



Confirmation dialog box appears, and press Yes to delete, No to cancel.



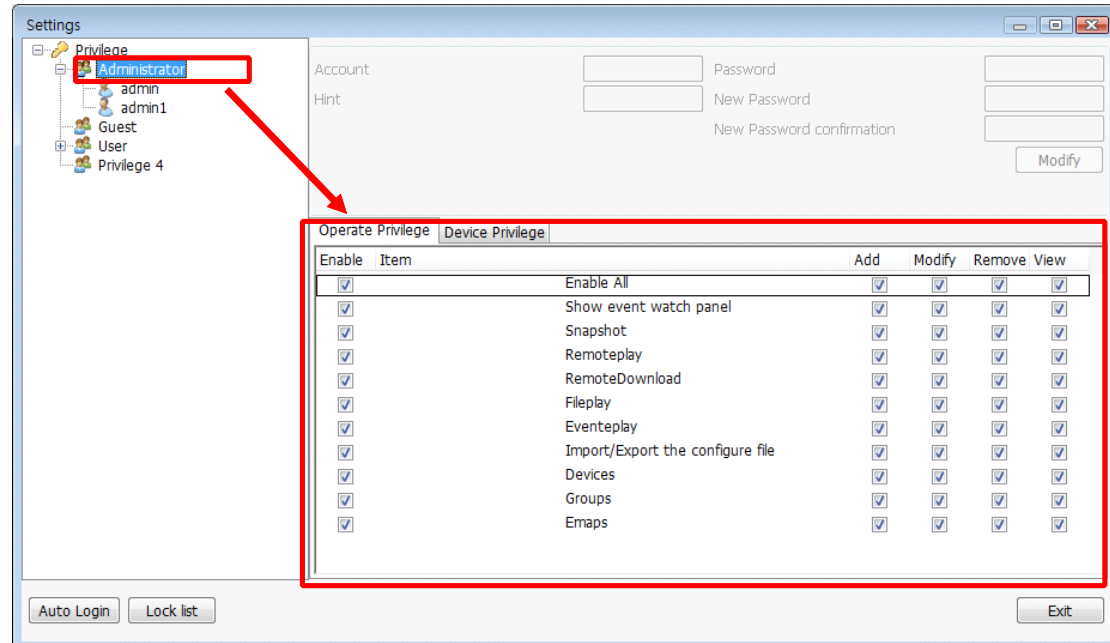
If there is only one administrator account existed in the iCMS, this account can not be deleted.



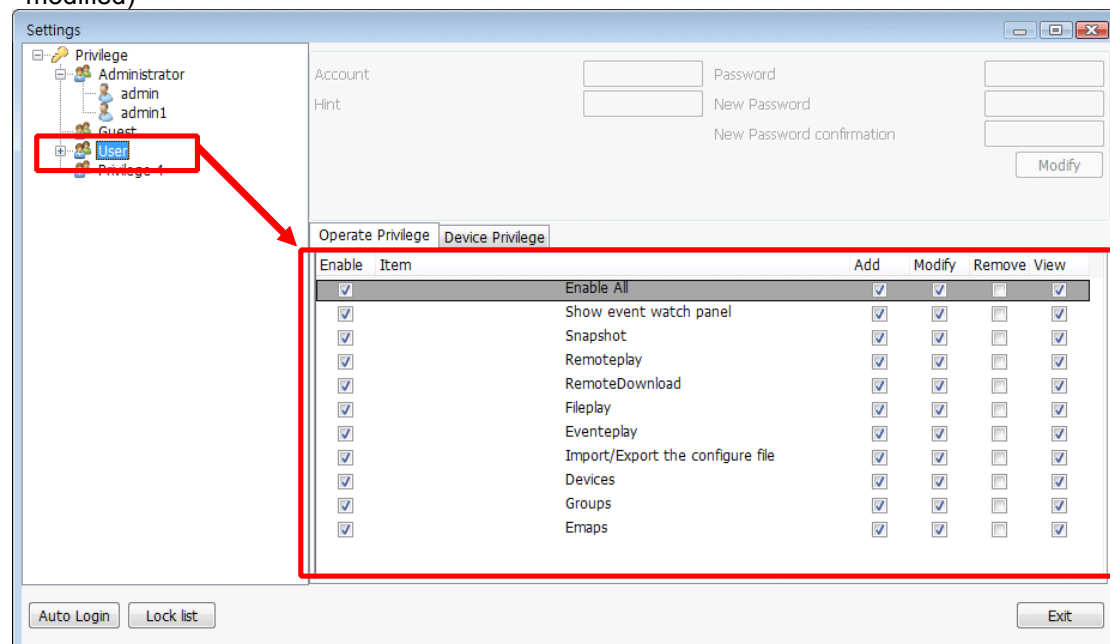
5 Permission to edit: According to different requirements to set different permissions.

5-1 Permission Edit :

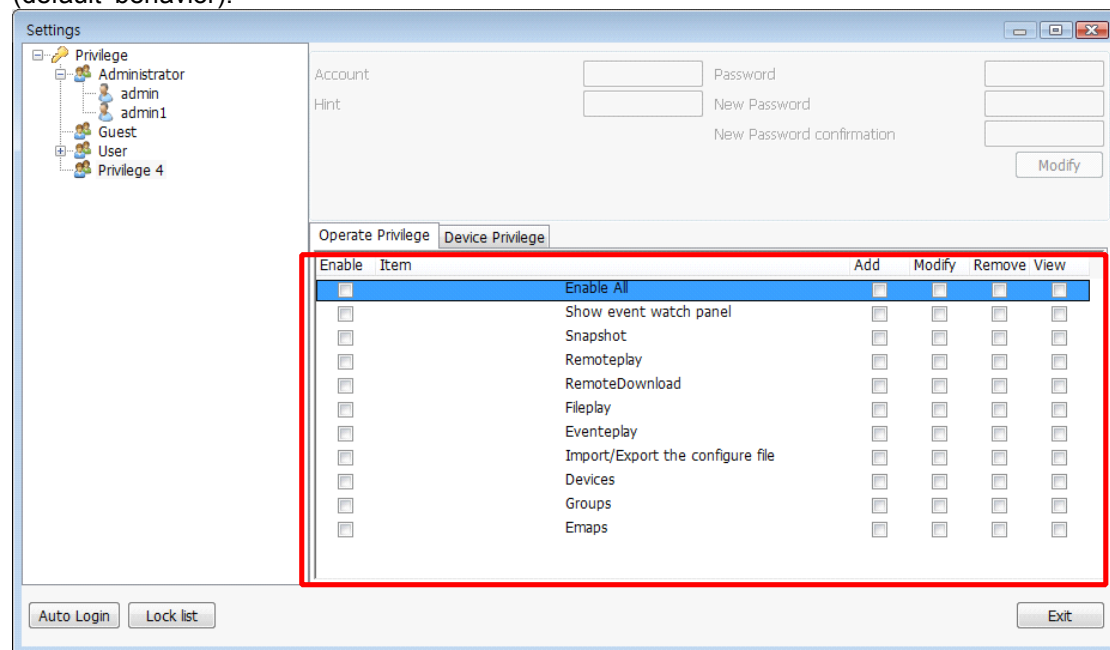
Click "Administrator", you can see the privilege status of the Administrator account
(The privilege cannot be modified.)



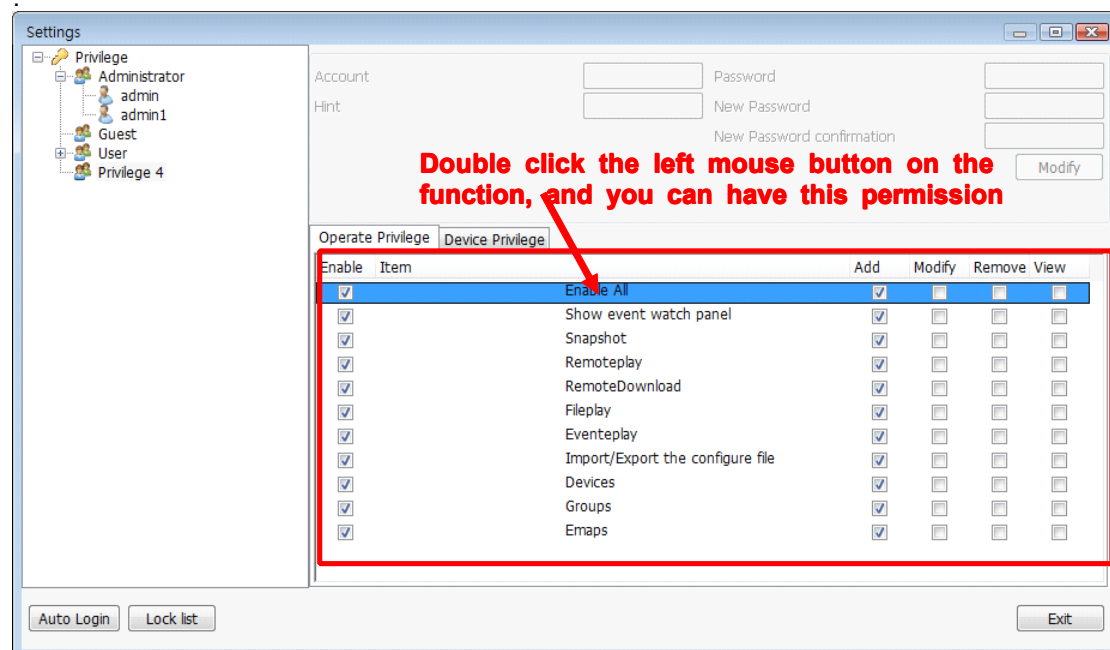
Click the "User", you can see a privilege status of user (The privilege status cannot be modified)



When a new privilege is created, all access privilege are not selected (default behavior).

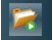


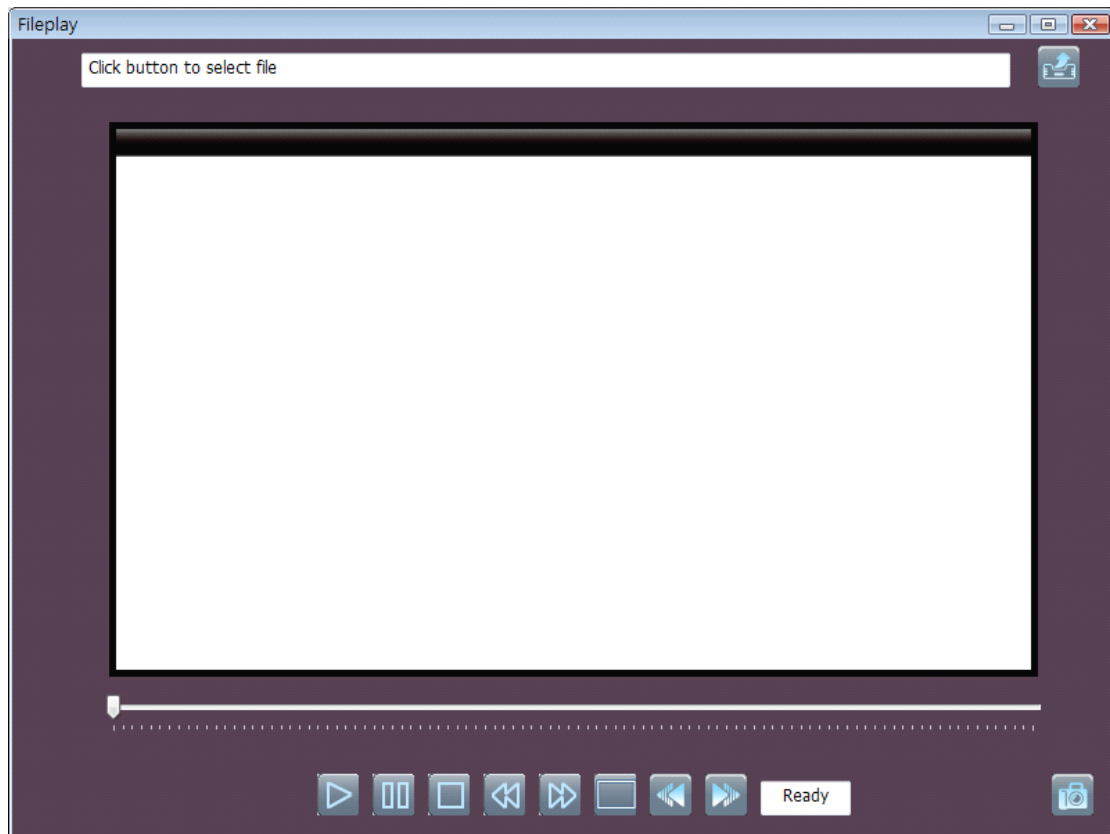
Double-click the check box to selected needed privilege. Notice, the iCMS uses double-click to enable or disable a check box.



1-4.7 File Play

It plays the backup files in the storage of the iCMS.

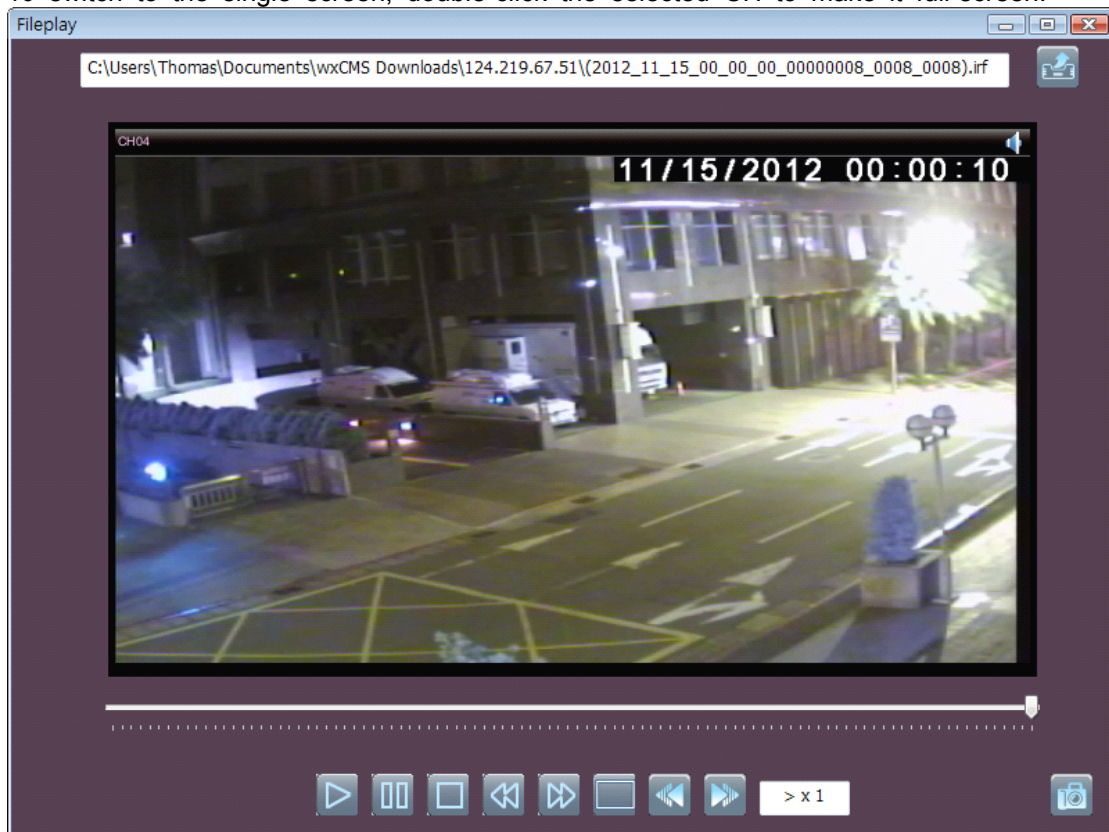
Left-click , it shows remote playback panel.



Click on the "Open" to select a backup file to play.

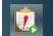
You can also use the buttons at the bottom of the window to playback, pause, stop, rewind, and fast forward.

To switch to the single screen, double-click the selected CH to make it full-screen.

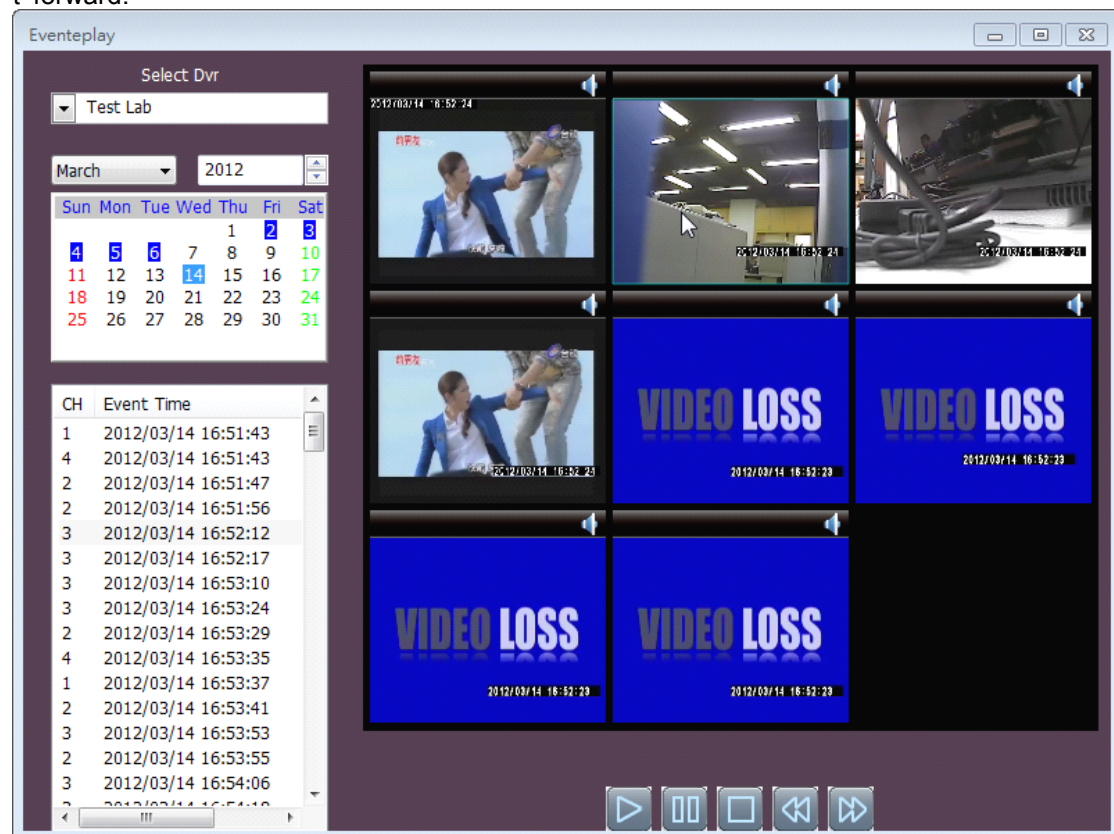


1-4.8 Event Play

Remotely play the DVR recorded event video.


Left-click  , it shows remote event play panel.

Select the DVR you want to play, and the system will list the event files within the time (date appear blue). Choose a date, and the system will search for the event records of the DVR automatically. Double-click a video clip to playback the selected video. You can also use the function listed at the bottom to playback, pause, stop, rewind, and fast forward.



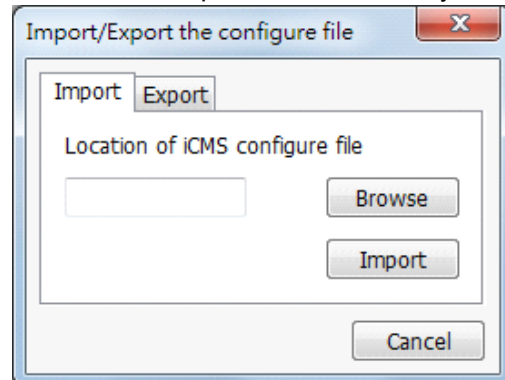
1-4.9 Import/Export Configure file

The CMS's configuration can be imported or exported.

Left-click  to enter the configuration file import / export function.

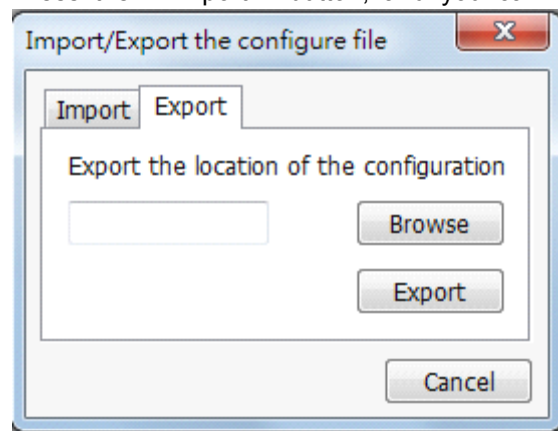
1.Import configuration.

Click "Browse" to select the directory where the configuration file is located.
Press the "Import" button, and you can import the CMS configuration file.



2.Export configuration.

Click "Browse" to select the directory where the configuration file is located.
Press the "Export" button, and you can export the CMS configuration file.

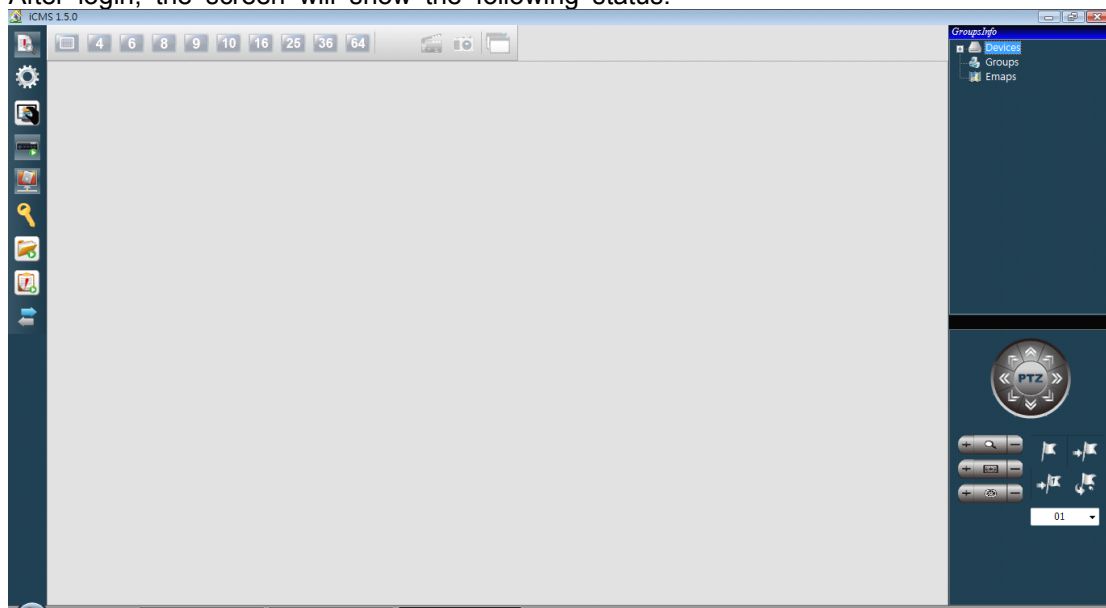


1-5 Live View Window

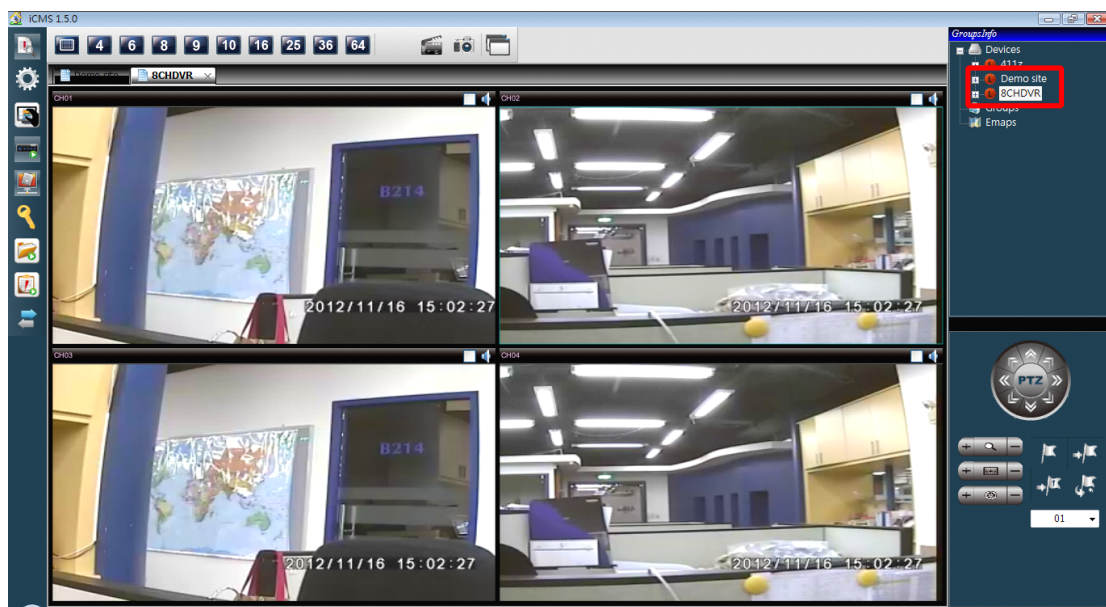
When the DVR and group have established complete, you can use this window to monitor live video. You can also open multiple DVR or group live video input from different DVR..

(The total number of available channels depends on the performance of the computer running ICMS)

After login, the screen will show the following status.

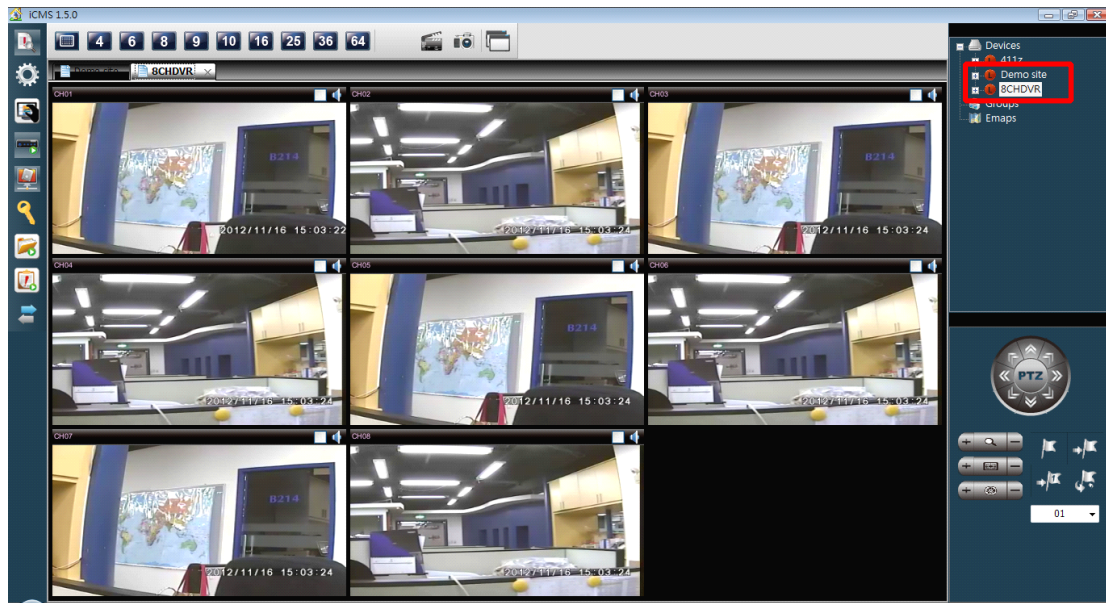


To watch the live view, please double click on a DVR or a group in the Group and DVR panel.

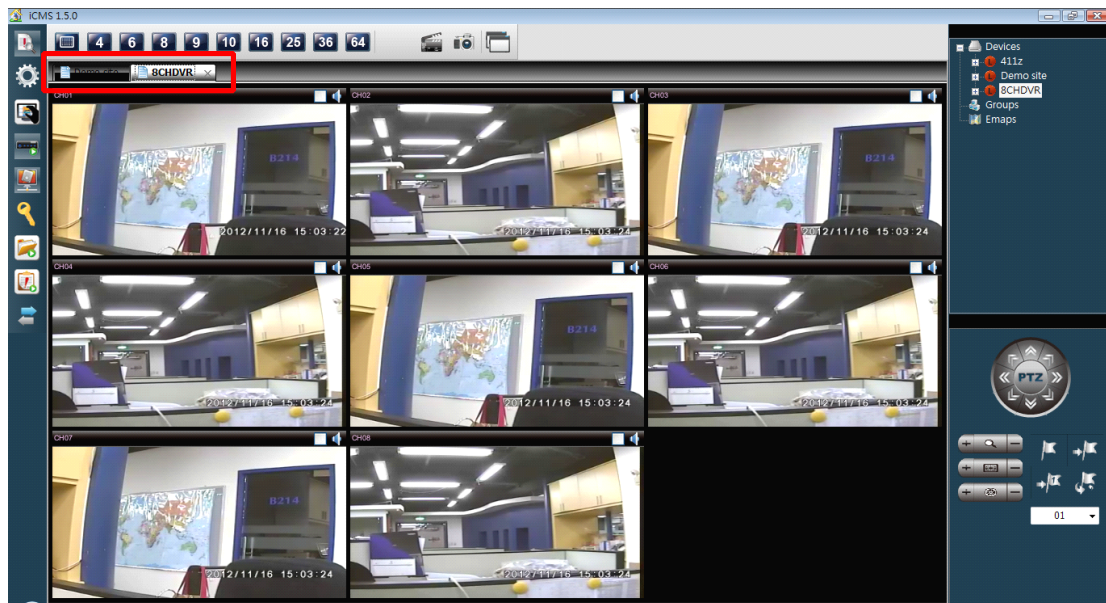


Multiple DVR or groups are supported.

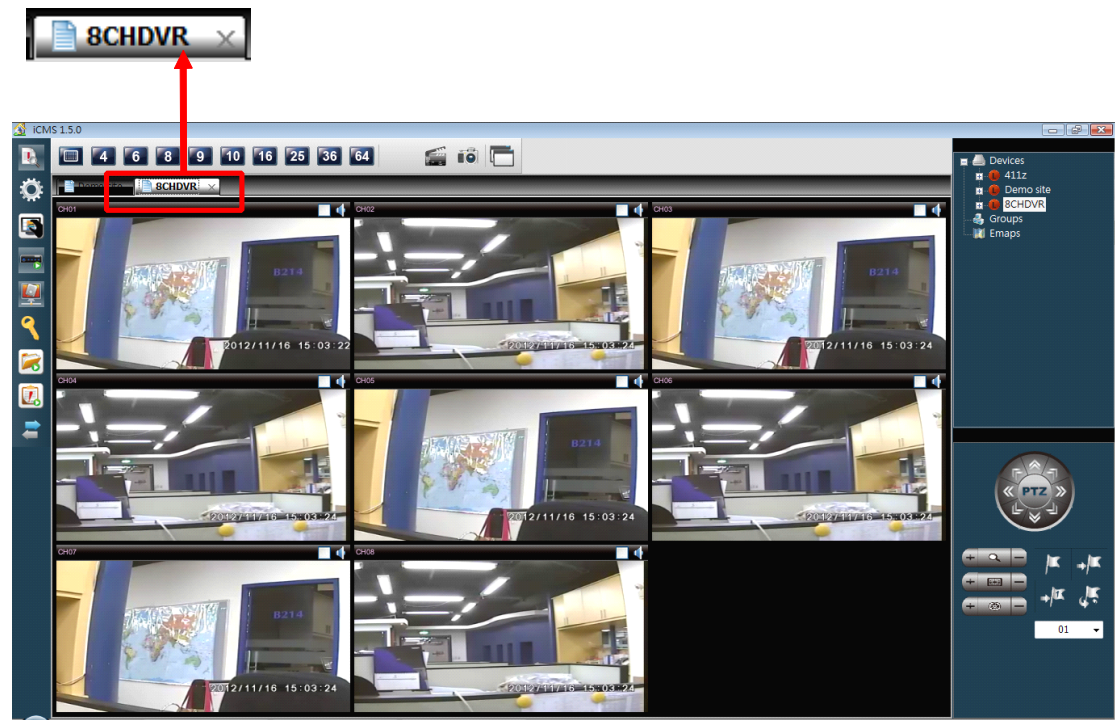
(The total number of available channels depends on the performance of the computer running iCMS)



All of the DVR or the group are listed on the tabs on the top of the live view area.

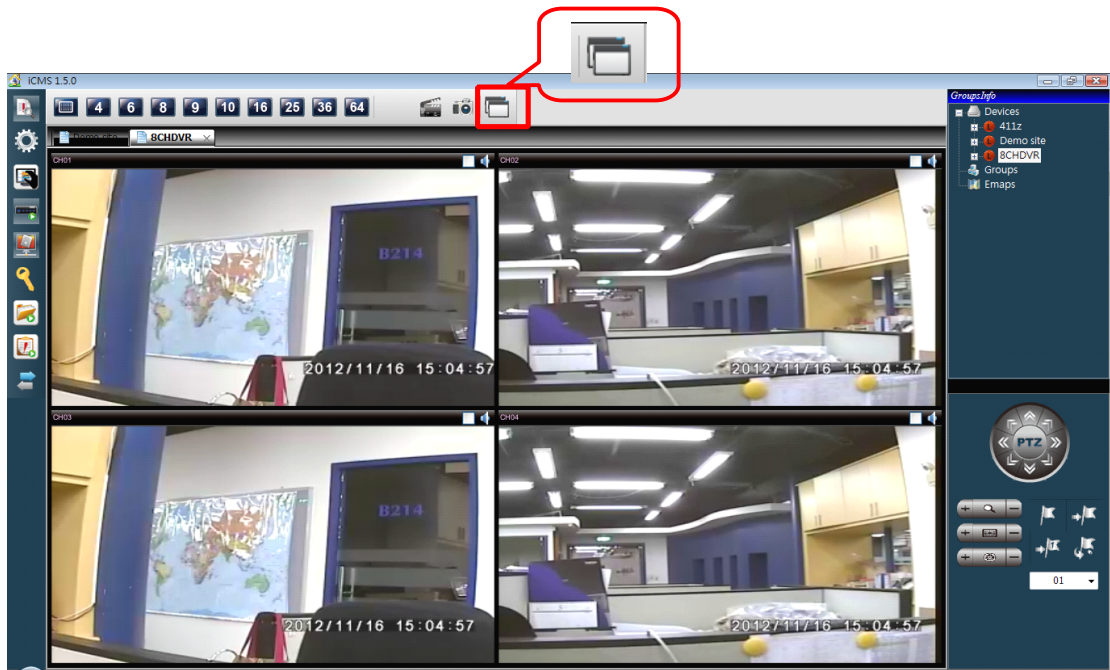


To turn off live view of the DVR or group of videos, please click on the "X" at the top right.



1-6 Multiple Windows

Click this button on the control panel to activate the feature “Multiple Windows.”



With this feature you can control multiple groups in different and independent windows. Every time the button is pressed, a new window will be created.

The multiple-windows button in the new window becomes the embedded-back button when a new window is created. When the embedded-back button is pressed, the created new windows will be embedded back to the main windows as a tab.



1-7 PTZ Control

PS. some supported special functions depend on PTZ model.

Step1: Go to live view monitoring (refer to Chapter 1-5).



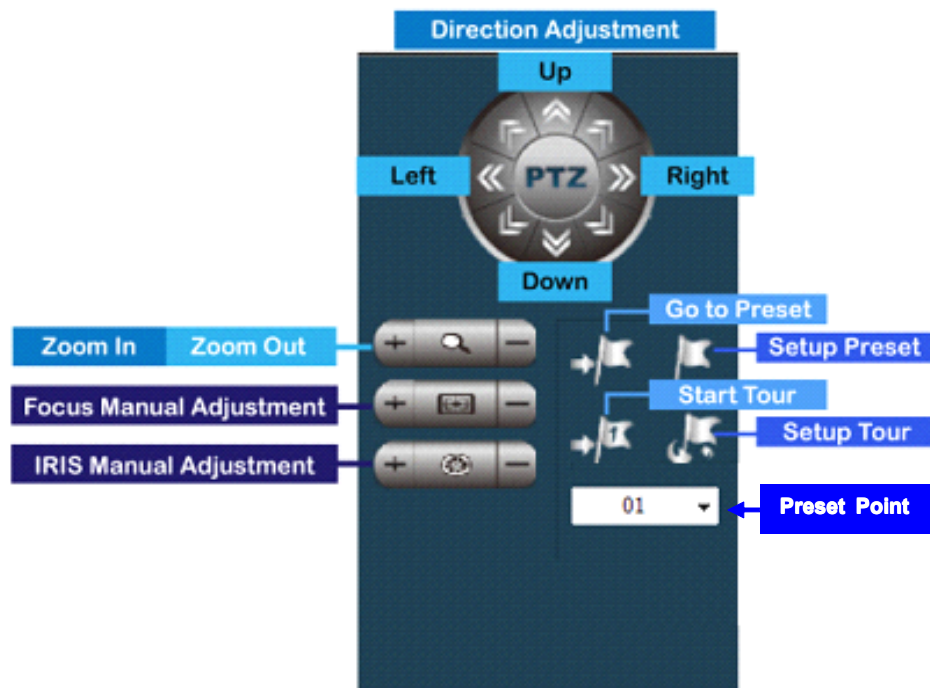
Step2: Check the upper right box of the screen of the PTZ camera you'd like to take control.



Step3: After appointing the screen of the PTZ camera, you can begin to operate it with the control panel at the lower right corner.



Step4: Function description of each button on the PTZ control panel.



- (1) Direction Adjustment : Adjusting the direction of the PTZ camera with these 8 buttons.
- (2) ZOOM : Zoom in or zoom out the screen.
- (3) FOCUS : Manually adjusting the focus.
- (4) IRIS : Manually adjusting the brightness.
- (5) Go to Preset : Sequential switch to the preset points.
- (6) Setup Preset : Setup the preset points.
- (7) Start Tour : Directly & automatically inspecting the preset points.
- (8) Setup Tour : Setup all the related functions of "Tour."
- (9) Preset : Setup the preset point.