

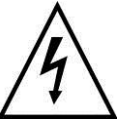



— DVR —

This document contains preliminary information and subject to change without notice.

 <div style="border: 1px solid black; padding: 2px; text-align: center;"> CAUTION RISK OF ELECTRIC SHOCK DO NOT OPEN </div> 	WARNING TO REDUCE THE RISK OF FIRE OR ELECTRIC SHOCK, DO NOT EXPOSE THIS APPLIANCE TO RAIN OR MOISTURE.
CAUTION : TO REDUCE THE RISK OF ELECTRIC SHOCK, DO NOT REMOVE COVER (OR BACK). NO USER SERVICEABLE PARTS INSIDE. REFER SERVICING TO QUALIFIED SERVICE PERSONNEL.	
 <p>This symbol is intended to alert the user to the presence of unprotected "Dangerous voltage" within the product's enclosure that may be strong enough to cause a risk of electric shock.</p>	
 <p>This symbol is intended to alert the user to the presence of important operating and maintenance (servicing) instructions in the literature accompanying the appliance.</p>	NOTE: This equipment has been tested and found to comply with the limits for a class digital device, pursuant to part 15 of the FCC Rules. These limits are designed to provide reasonable protection against harmful interference when the equipment is operated in a commercial environment. This equipment generates, uses, and can radiate radio frequency energy and, if not installed and used in accordance with the instruction manual, may cause harmful interference to radio communications. Operation of this equipment in a residential area is likely to cause harmful interference in which case the user will be required to correct the interference at his own expense.



Disposal of Old Electrical & Electronic Equipment (Applicable in the European Union and other European countries with separate collection systems)

This symbol on the product or on its packaging indicates that this product shall not be treated as household waste. Instead it shall be handed over to the applicable collection point for the recycling of electrical and electronic equipment. By ensuring this product is disposed of correctly, you will help prevent potential negative consequences for the environment and human health, which could otherwise be caused by inappropriate waste handling of this product. The recycling of materials will help to conserve natural resources. For more detailed information about recycling of this product, please contact your local city office, your household waste disposal service or the shop where you purchased the product.

Notice: Ghosting or fractured images may occur on the screen when there is a suddenly surge or lightning stroke which cause damage on IC in the DVRs.

Table of Contents

CHAPTER 1 MAIN MENU SETUP	4
1-1 RECORD SETUP	5
1-1.1 Quality & Frame Rate Setup	6
1-2 EVENT SETUP	6
1-2.1 MOTION SETUP	7
1-2.1.1 MOTION AREA SETUP	7
1-2.2 SENSOR SETUP	8
1-3 SCHEDULE SETUP	9
1-3.1 Schedule Record Setup	9
1-3.2 Holiday Setup	10
1-4 CAMERA SETUP	10
1-5 ACCOUNT SETUP	11
1-5.1 Permission Setup	11
1-5.2 User Picture Setup	12
1-6 NETWORKING SETUP	12
1-6.1 NETWORKING SETUP	13
1-6.1.1 DHCP	13
1-6.1.2 LAN	13
1-6.1.3 ADSL	14
1-6.1.4 3G	14
1-6.2 HTTP Setup	15
1-6.3 DDNS Setup	16
1-6.4 Mail Setup	17
1-7 PTZ & RS485 SETUP	18
1-8 SYSTEM SETUP	19
1-8.1 DISPLAY SETUP	19
1-8.2 DATE/TIME SETUP	20
1-8.2.1 CHANGE DATE & TIME	21
1-8.2.2 TIME ZONE AND DAYLIGHT SAVING TIME SETUP	21
1-8.2.3 INTERNET TIME SETUP	22
1-8.3 BUZZER & RELAY SETUP	22
1-8.4 SPOT SETUP	23
1-9 UTILITY SETUP	24
1-10 DIAGNOSTIC	25
CHAPTER 2 BACKUP & SEARCH	26
2-1 BACKUP SETUP	26
2-2 SEARCH SETUP	29
2-2.1 EVENT SEARCH	29
2-2.1.1 CRITERIA SETUP FOR EVENT SEARCH	30
2-2.2 TIME SEARCH	31
CHAPTER 3 Remote Software Installation and Setup	32
3-1 AP Software Installation and instruction	32
3-2 How to do remote monitoring through IE	34
3-3 How to do remote monitoring through JPEG VIEWER(Only Monitor Function)	35
3-4 AP Software Operation	37
CHAPTER 4 Specification	38

CHAPTER 1 MAIN MENU SETUP

To enter the main menu and set up DVR, log-in account and user password are required. The default password of the administrator is “123456”. Please check the “Account Setup” for related setup of other log-in users.



Table 1-0.1 Some definition of virtual keyboard.







Item	Description
	Switch between capital and small letters.
	Switch between numbers and letters.
	Press to cancel the setup, and re-choose the login account.
	Delete the last character.
	Enter to identify the password. It will enter the set up menu, If the password is verified.
	Space key



Table 1-0.2 The operation of remote control under the setting menu

Item	Description
◀ ▶	Switch to different options under one item
▲ ▼	Switch to different items
MENU	Save setup and back to LIVE mode
ESC	Back to Upper level of menu without saving
ENTER	Enter the menu, or display virtual keyboard

*PS. The initialization of new-installed HD is required before recording, please refer to “ **UTILITY SETUP**” for detail.*

1-1 RECORD SETUP



Item	Description
HDD FULL	Select STOP to stop recording or OVERWRITE to reuse the HDD when HDD is full 「Stop」: Stop Recording 「Overwrite」: Start to overwrite that begin from the oldest data of HDD, and continue to record.
OSD position X	Setup OSD X axis
OSD position Y	Set up OSD y axis
OSD position setup	Set up OSD axis
Video Preservation	Setup the video preservation period. Recorded video will be deleted automatically after expiry of preservation period.
Quality & Frame Rate Setup	Setup the quality and frame rate for each channel under normal recording and event recording type.

Note : 4CH DVR will display 4 channels and 8CH DVR will display 8 channels.

1-1.1 Quality & Frame Rate Setup



Item	Description
Normal setup/ event setup	Select recording mode
Resolution	Select recording resolution: NTSC:352x240, 704x240, 704x480 PAL:352X288,704X288,704X576
Record Type	You can setup quality and FPS separately for record type.
No.	Check/uncheck the box enable/disable selected channel recording
Quality	Select quality: Below Basic/ Basic/ Normal/ High/ Highest
FPS	Select recording frame rate. (The number of sheets in accordance with the actual models)
Auto	Assign each channel with its maximum accessible fps

Note : 4CH DVR will display 4 channels and 8CH DVR will display 8 channels.

1-2 EVENT SETUP



Item	Description
Motion Setup	Enter to set up motion detection
Sensor Setup	Enter to set up sensor detection

1-2.1 MOTION SETUP

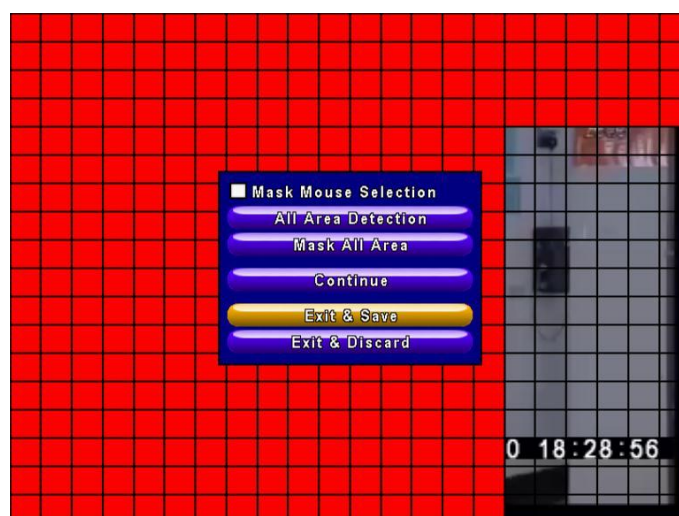


Item	Description
Alarm Duration(Seconds)	When motion detect , the number of seconds continuous alarm
1~16	You can setup independently for each channel.
Enable	Check the box to Enable/Disable motion detection for each channel.
Sensitivity	Drag the white bar or press ◀ ▶ to set up Sensitivity from value 0 to 10 for each channel. The higher value you set the higher sensitivity it will be.
Motion Area Setup	Enter to setup motion detection area

Note : 4CH DVR will display 4 channels and 8CH DVR will display 8 channels.

1-2.1.1 MOTION AREA SETUP

The motion detection has been divided into 22x18 grids. The default detection area is full screen as it marked in transparent for local DVR and purple for remote access. Areas deselected for motion detection are marked in red for both local and remote site.



Item	Description
Mask Mouse Selection	Switch between “select” and “deselect” for cursor-dragging function
All Area Detection	Select entire screen as detection area.
Mask All Area	Deselect entire detection area.
Continue	Continue setup
Exit & Save	Save setup and leave
Exit & Discard	Cancel setup and leave

1-2.2 SENSOR SETUP

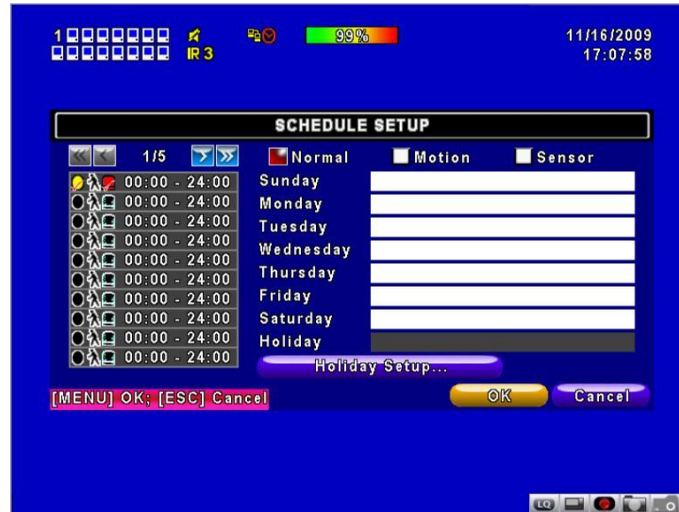


Item	Description
Sensor Popup	Check the box to Enable/Disable popup screen function for all channels. When Sensor is detected in LIVE mode, the detected channel image will pop up in full screen display.
All Off	Set all sensor off
All Low	Set all sensor polarity low
All High	Set all sensor polarity high
Sensor Polarity	<p>Click or press ▼ to select between HIGH, LOW voltage for triggering sensor detection or OFF to turn off polarity for each channel</p> <p>Low Polarity : Sensor has not been triggered. When connected, sensor will be turned on..</p> <p>High Polarity : Sensor has been triggered. When connected, sensor status will be turned off..</p> <p>Off : Sensor is deactivated, and will not be turned on/off.</p>

Note : 4CH DVR will display 4 channels and 8CH DVR will display 8 channels.

1-3 SCHEDULE SETUP

Except from starting recording manually, you can also setup the recording time by weeks and schedule including normal, motion detect, and recording type.



Item	Description
Page	Each page provides 10 schedules for setup. 5 pages in total.
Holiday Setup	Enter to setup holiday, up to 50 days, other than weekends,.
View Event/ Motion/ Sensor Setup	View Normal/ Motion/Sensor

Note : 4CH DVR will display 4 channels and 8CH DVR will display 8 channels.

1-3.1 Schedule Record Setup

Click on the time on the left side. The setup menu will be displayed. You can have detail setup by dates, Time and event.

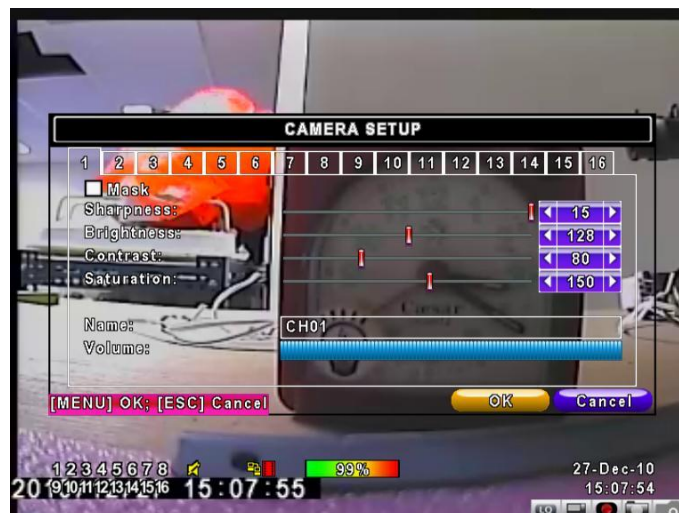


1-3.2 Holiday Setup

Since holidays are different by different country and region, you can setup the holiday of your location accordingly.



1-4 CAMERA SETUP



Item	Description
1~16	You can setup independently for each channel.
Mask	Check the box to Enable/Disable mask function for LIVE mode
Sharpness	Drag the bar or press ◀ ▶ to adjust Sharpness of your camera from value 0 to 15.
Brightness	Drag the bar or press ◀ ▶ to adjust Brightness of your camera from value 1 to 255.
Contrast	Drag the bar or press ◀ ▶ to adjust Contrast of your camera from value 1 to 255.
Saturation	Drag the bar or press ◀ ▶ to adjust Saturation of your camera from value 1 to 255.
Name	Set up name of each channel
Volume	Audio volume under LIVE mode and recording mode can be adjusted.

Note : 4CH DVR will display 4 channels and 8CH DVR will display 8 channels.

1-5 ACCOUNT SETUP

The Account Setup menu is used to provide role-based permission independently setting for each user (maximum of 4 users) to access DVR over network. The default admin account and password is “admin” and “123456”

(The default password remains the same after firmware upgrade)



Item	Description
No.	Check to activate the user's account.
Username	Set up username
Password	Set up password for each user. Password is 8-digits required and can be mixed by letters and numbers with case-sensitive. Letters can be mixed with capitals or lowercases.
Permissions	Set up Permissions for each user
Change Admin Password	Change administrator's password
Picture	Change user's picture

1-5.1 Permission Setup

The Account Setup is set to provide individual user (maximum of 4 users) role-based permissions, including access to Setup menu, Network operation, PTZ function, Playback, Utility, Backup, Password expiry date and Mask on specific channels while playing back.



1-5.2 User Picture Setup

User can select picture wished to be changed to from hard drive.



1-6 NETWORKING SETUP



Item	Description
Connect type	Setup mode for network connection: (ADSL 、 DHCP 、 LAN 、 3G).
HTTP Setup	Enter to set up HTTP
DDNS Setup	Enter to set up DDNS
Mail Setup	Enter to set up mail
3G Setup	Enter to set up 3G network

1-6.1 NETWORKING SETUP

There are three ways to connect to the network as followed.

1-6.1.1 DHCP

When DHCP is selected, IP address will be assigned by DHCP server automatically.



1-6.1.2 LAN

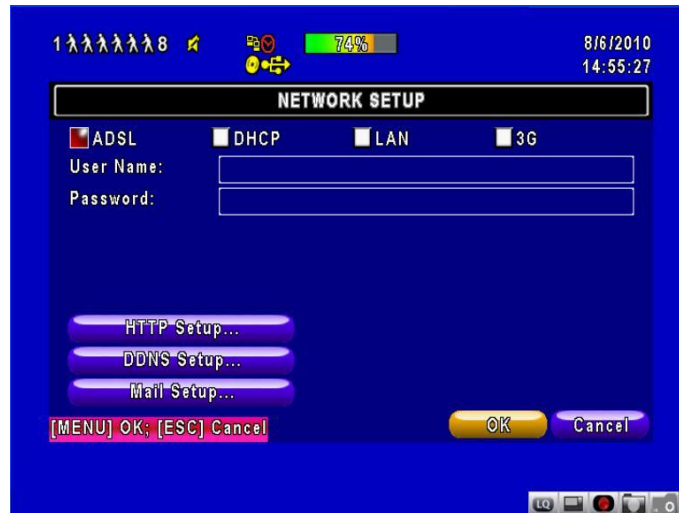
Select LAN for network connection, the following information is required.



Item	Description
IP Address	Enter IP address provided by ISP
Subnet Mask	Enter IP address of Subnet Mask provided by ISP
Gateway	Enter IP address of Gate way provided by ISP
DNS	Enter DNS address provided by ISP. (Note: The correct DNS address must be entered for DDNS function).

1-6.1.3 ADSL

Select ADSL for network connection, the following information is required.



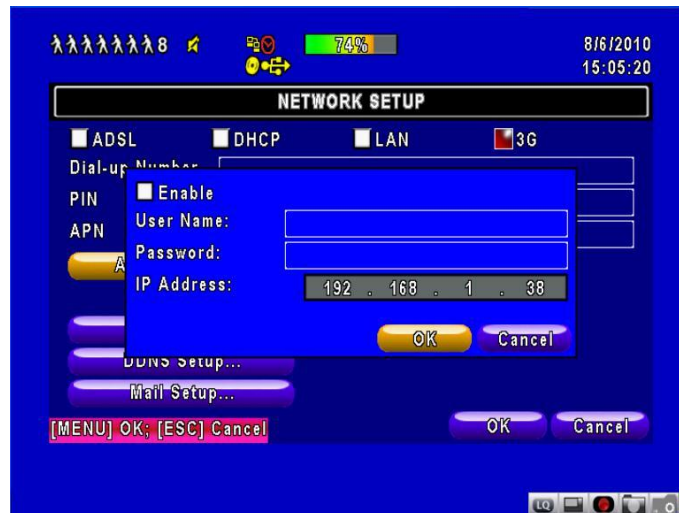
Item	Description
User Name	Enter user name provided by ISP
Password	Enter password provided by ISP

1-6.1.4 3G

Select 3G for network connection, the following information is required.



Item	Description
Dial-up Number	Dial-up Number , Determined as the ISP
PIN	Enter SIM card password
APN	Enter "internet"
Advance Setting	The advanced settings (Taiwan ISP outside)



Item	Description
Enable	Enable advance setting
User Name	Enter ISP username
Password	Enter ISP password
IP Address	Enter the ISP provides a fixed IP address . (if the client uses the Internet only need to enter a fixed IP)

PS : This feature currently only supports the Huawei 3G card

1-6.2 HTTP Setup



Item	Description
Enable HTTP Server	Check to enable HTTP server. Users can remotely access into the DVR over the network if the HTTP function is activated.
Port	Enter a valid port value from 1 up to 65000. The default value is 80.
Auto	Assign each channel with its maxima accessible fps
No.	Chanel number
Quality	Set up record quality. There are below basic, basic, normal, high, highest
FPS	Set up record FPS

1-6.3 DDNS Setup

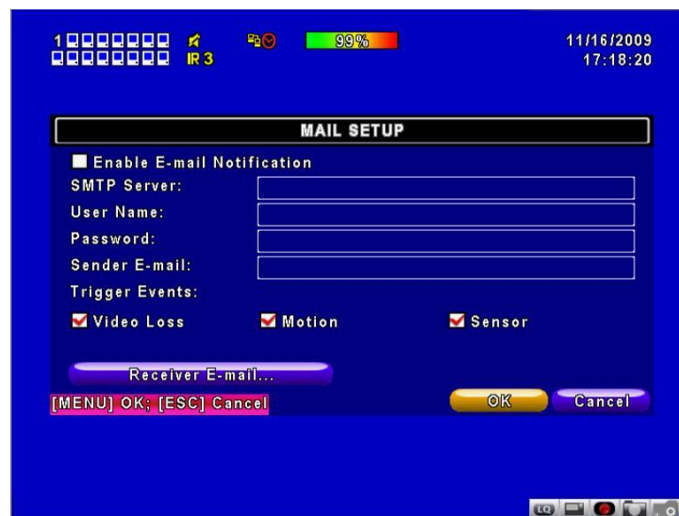


Item	Description
Enable DDNS	Enable/disable DDNS function.
DDNS Server	Enter the registered SMTP Server: ez-dns * \ I-DVR.NET * \ DYNDNS.ORG \ NO-IP.ORG \ 3322.ORG
Host Name	Enter the completed registered SMTP Server. (Including username + Server) If the user name is h.264 and you choose i-dvr as your server, you should enter: h.264.i-dvr.net
User Name	Enter user name.
Password	Enter password.

***For more detailed I-DVR.NET,ez-dns operation instruction,please refer to appendix**

1-6.4 Mail Setup

When event occurs (VLOSS, MOTION), email will be sent to the receiver account automatically.



Item	Description
Enable E-mail Notification	Check the box to enable/disable E-mal Notification function.
SMTP Server	Enter to set up SMTP Server name. (Varies according to the user)
User Name	Enter to set up User Name.
Password	Enter to set up Password.
Sender E-mail	Enter to set up e-mail address of receivers.
Trigger Event	Enter to select events to send out E-mail notifications when below circumstances happen: Motion, Sensor and Vloss (Video Loss).
Receiver E-mail	Enter to set up e-mail addresses for up to 10 receivers individually.

1-7 PTZ & RS485 SETUP

The DVR allows users to control PTZ functions of your camera. To enable PTZ function, the 485 cable should be connected to the RS-485 port of DVR.



Item	Description
Enable PTZ	Click the box to Enable/Disable PTZ function for each channel.
Protocol	Set up the protocol of PTZ cam. The supported protocol are PELCO-P, PELCO-D, KND, LI-LIN, SAMSUNG, LG, AVTECH.
PTZ ID	Click or press ◀ ▶ to set up PTZ ID. The valid ID value is from 1 to 64.
Baud Rate	Select Baud Rate for PTZ from 2400, 4800, 9600, 19200
RS-485 ID	Select RS-485 ID from 1 to 64
RS-485 Baud Rate	Select RS-485 Baud Rate from 2400, 4800, 9600, 19200
Keyboard	Select Keyboard.

Note : 4CH DVR will display 4 channels. 8CH DVR will display 8 channels.

1-8 SYSTEM SETUP



Item	Description
DVR Name	The name of DVR will be shown when users login from remote access.
DVR Location	The location of DVR will be shown when users login from remote access
Language	Click or press ▼ to select OSD language.
Remote ID	Default ID is 0. DVR is controlled by standard remote control,
Display Setup	Enter to set up Display
Date/Time Setup	Enter to set up Date/Time
Device Setup	Enter to set up Buzzer & Relay
Spot Setup	Enter to set up Spot

1-8.1 DISPLAY SETUP



Item	Description
Auto-Seq Interval	Set up duration time in seconds for the interval between channels under Auto-Seq mode.
Show OSD	Turn On / Off OSD display
Show DVR Status	Turn On / Off DVR illustration and record status display
Show Date/Time	Turn On / Off date and time display
Show Channel Name	Turn On / Off channel name display
Border Color	Set up the color of border in LIVE , PLAYBACK mode. (Red, Green, Blue)

1-8.2 DATE/TIME SETUP



Item	Description
Hour Format	12HOURS/ 24HOURS
Date Format	MM-DD-YY/DD-MM-YY/YY-MM-DD
Date/Time Position	Choose the position of Time and Date display
Change Date & Time	Setup time and date of DVR
Time Zone Setup	Set up GMT and Daylight Saving Time.
Internet Time Setup	Setup automatic synchronization with internet server

1-8.2.1 CHANGE DATE & TIME

Setup date and time of DVR manually according to user's local time.



1-8.2.2 TIME ZONE AND DAYLIGHT SAVING TIME SETUP

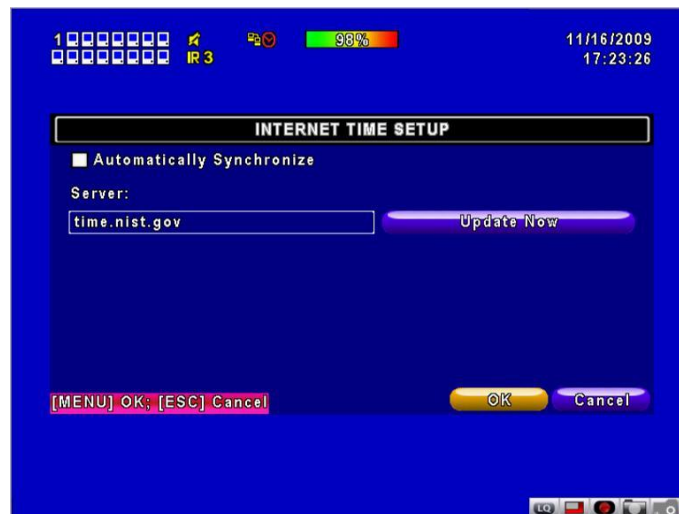
Set up time zone and activate Daylight Saving Time function according to user's DVR location.



Item	Description
Select Time Zone	Enter to modify GMT from GMT- 13 to GMT+ 13
Daylight Saving Time	Turn on/ off Daylight Saving Time

1-8.2.3 INTERNET TIME SETUP

Synchronize your DVR time with internet time server.



Item	Description
Automatic Synchronization	Check to enable DVR automatic synchronization function. Effective by this option selected, DVR will automatically synchronize the time upon rebooting or by every 24 hours after booting.
Update Now	Effectively, Date and Time show on DVR will immediately correspond with those in internet server.

1-8.3 BUZZER & RELAY SETUP



Item	Description
Mouse Speed	Move the mouse cursor speed, the more the faster to the right. (Only Local machine)
Buzzer & Relay Setup	Into the buzzer & relay setup.



Item	Description
Key Tone	Enable/Disable keystrokes.
Buzzer	Enable/Disable buzzer operation when the alarm is triggered for sensor, motion and vloss (Video Loss).
Relay	Enable/Disable the signal to be sent to the RELAY OUT blocks when the alarm is triggered for sensor, motion and vloss.

1-8.4 SPOT SETUP



DVR's Main Monitor output signal, do the main screen output or switch SPOT mode output

Item	Description
SPOT MODE	Channels display in spot for two different modes: Disable:The screen is same the main screen with VGA output, Enable: Spot Mode
Interval (Seconds)	The duration time in seconds for the interval between channels under SPOT mode.
Skip Video Loss Channel	Whether to skip channels without video signal.

1-9 UTILITY SETUP



Item	Description
HDD Initialization	Select to enter hard disk initialization menu. Please stop recording before entering this menu. Enter the menu, system will show all the data (model ,volume) of HDD that installed in DVR. Check the HDD you'd like to initialize then press "Start". HDD initialization is successful when the status shows "Succeed"
USB Initialization	Clean up all data on USB. Enter USB initialization and press YES to clean up all data on your USB. The initialization is done when it's showed "Succeed".
System Recovery	Restore system default values
Reset System Events	Reset all the recording events in DVR.
Copy Setup to USB	Copy configuration to a USB device. There will be a file named 「sdvr_conf.dat」 on your USB.
Download Setup from USB	Download configuration from a USB device into DVR.
Upgrade	Upgrade DVR through USB. Please stop recording and backup setup configuration before upgrading. System will reboot automatically when the upgrade is completed.

Notice! DO NOT TURN OFF POWER OR UNPLUG USB DEVICE DURING THE UPGRADE as it may cause incomplete firmware upgrade and damage to the DVR.

1-10 DIAGNOSTIC



Item		Description
Version		The current firmware version of DVR
IP		The connected IP address of DVR. If disconnected from network, the screen will display " NETWORK DISCONNECT".
MAC		MAC Address of DVR
HDD Status	No.	HDD number
	Volume	HDD Capacity
	Used Rate	Percentage of space used on HDD.
	Status	Shows HDD status. USING: means the HDD is being used for recording now GOOD/BAD: means the HDD has a known/unknown format for the DVR. (Note: Please initialize your newly-installed HDD before using it.)
	Format Time	The latest format time of HDD

CHAPTER 2 BACKUP & SEARCH

2-1 BACKUP SETUP

User can backup any segment of recorded data in a specified time frame. To do so, either a CD R/W or storage device, like USB, must be connected to the DVR. The format of backup file is *IRF* file that can be played by both "Ifileplay" and "CMS"

*** :Use the USB flash backup, the system will automatically copy "Ifileplay" to the USB**



Item	Description
From	The start time of backup file
To	The end time of backup file
Device	Select USB or PC as the backup device
Free Space	The available space in your backup device. (not available for PC backup)
Refresh	Recalculate the available space of backup device. (not available for PC backup)
Required Space	Show the size of the backup file
Calculate	Calculate the size of backup file
Start	Start backup operation. Be sure to calculate the size of backup file BEFORE operating backup.

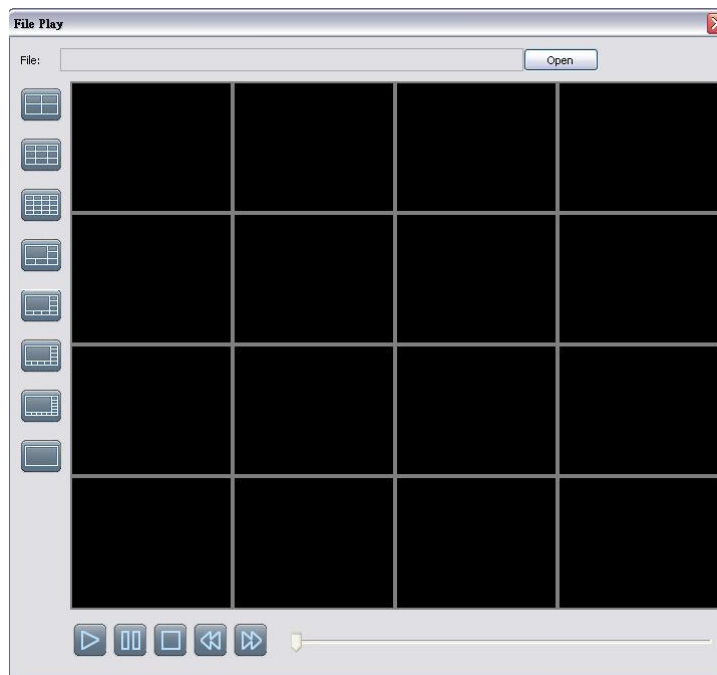
Note! Do not unplug the USB device or turn off the DVR during the backup process to avoid unrecoverable error.

iFileplay Use Method

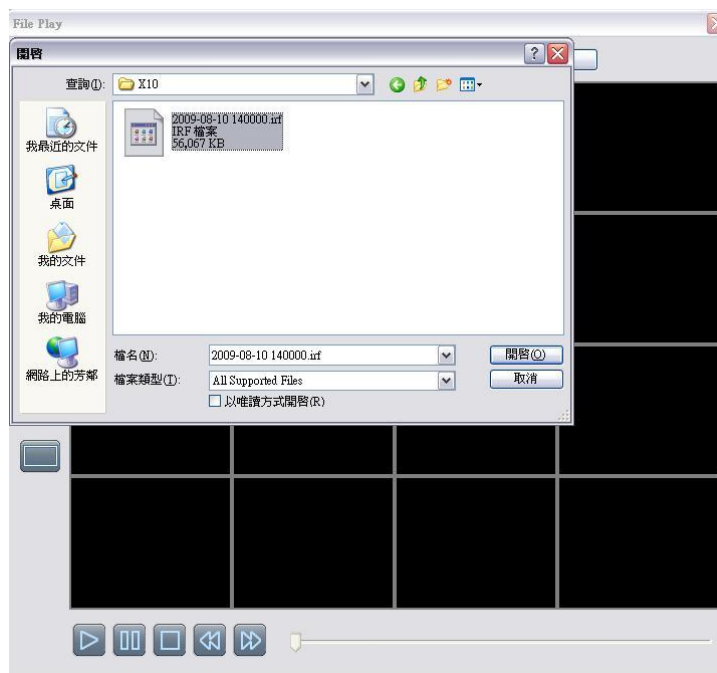
Step 1: install 「iFileplay」 software to your PC. You can get「iFileplay」file from the CD with DVR Packing.

PS: When you using USB to backup file, iFileplay.exe will copy to USB with the backup file automatically.

Step 2 : Setup 「ifileplaypack.exe」。



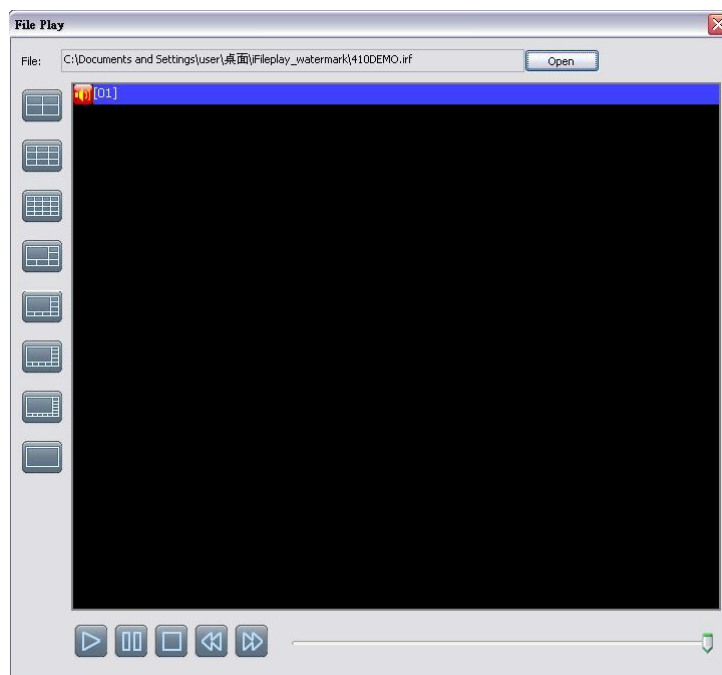
Step 3 : Click 「open」, choose and star a DVR backup file 。



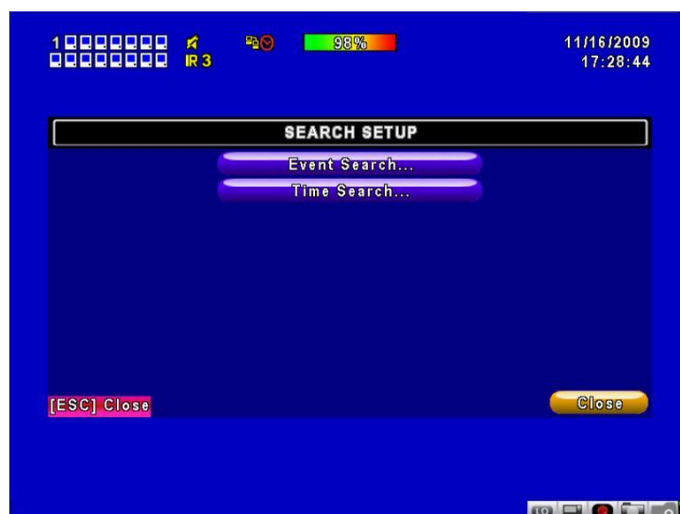
Step 4 : Ifileplay software will play the backup file automatically.



Step 5 : If there is no display on the screen, The backup file is not our DVR recording format. Please check it.




2-2 SEARCH SETUP



Item	Description
Event Search	Event search menu
Time Search	Enter time search menu

2-2.1 EVENT SEARCH



The DVR automatically records events with type, time and channel information included. If there is recording data for an event, a yellow signal  will be shown on the left side of time information. Rest your cursor under the line and press “enter”, or left click your mouse to playback the recording data.

P.S. Event Records will still be generated even when hard disk is not installed or the record function is not activated. However, the record can't be viewed after selecting it.


Item	Description	
Criteria	Setup conditions of event search	
Page	Switch between pages of events	
Date/Time	Date/time when event occurred.	
Event Type	Event type, defined as following	
	MOTION	Motion Detected
	Video Loss	Video Loss
	Remote Login	user log-in over the network
	Remote Logout	user log-out over the network
	Power On	DVR Power on
	HDD Full	HDD Space FULL
	HDD Error	Detect HDD error
	Reboot	DVR Reboot
Info	The channel where event occurs or login user	

2-2.1.1 CRITERIA SETUP FOR EVENT SEARCH

The amount of events can be numerous. Therefore, you can facilitate event sorting by setting up “criteria”. Setup “start time” and “end time” for event search, then the search result will be limited to this specific period of time. Only checked events and channels will be sorted in event search.

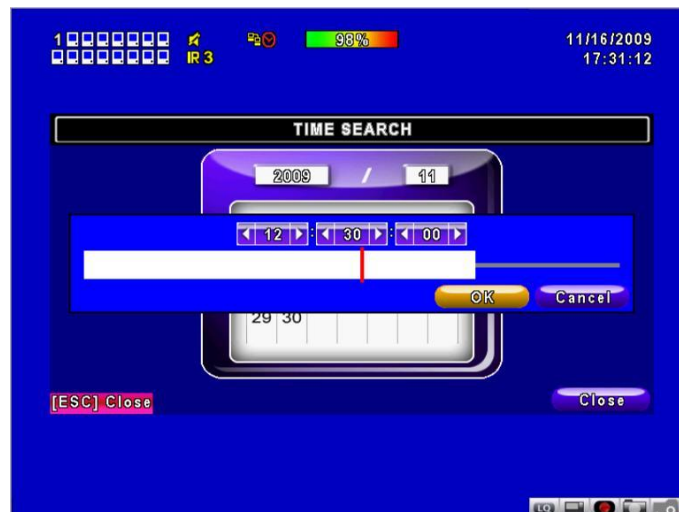


2-2.2 TIME SEARCH

TIME SEARCH can search for the specific time of recording data to playback. Press “Enter” or left click on the desired date to playback. Note that dates with recording data are marked with a red square “”. “System will start playing back according to the date you selected. Calendar will be shown by using mouse to click on “year” and “month”.



Click “date” to display recording time of that specific date with time bar. You can change time (hour/minute/second) or click on a specific time of time bar by mouse then press “ok”. DVR will playback the selected recording data.



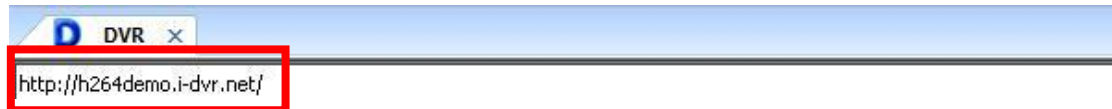
CHAPTER 3 Remote Software Installation and Setup

3-1 AP Software Installation and instruction

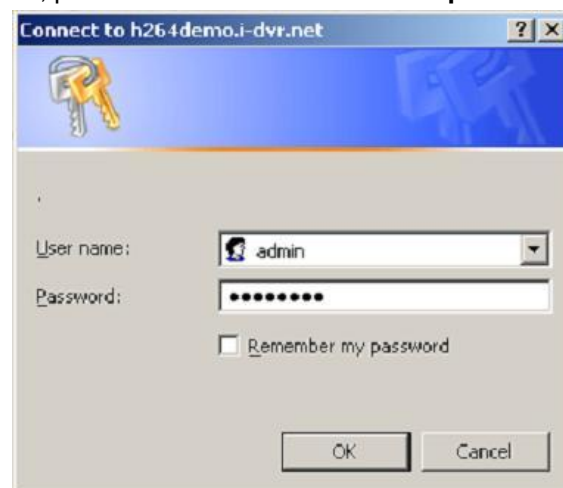
AP software: 「DVR Remote Desktop」 can allow you to remotely access and control the DVR from PC.

p.s. Operation system currently supports Windows XP SP2(above) and Windows Vista, Windows 7

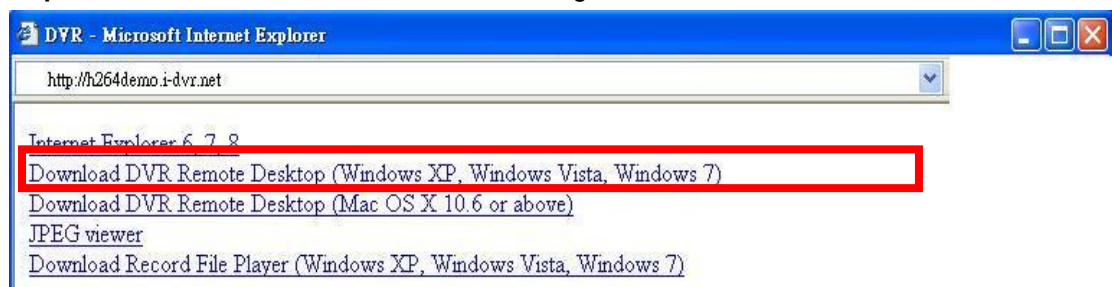
Step One : Enter the IP address of DVR in IE browser



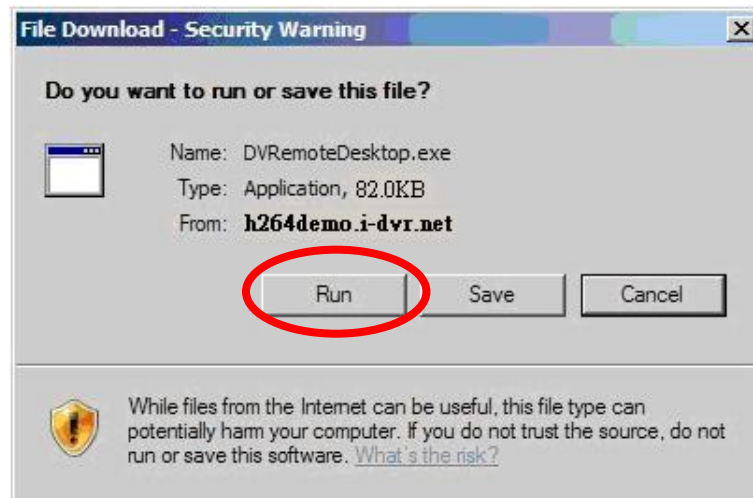
Step Two: Windows as below will show up. Please enter the user name and password. Default user name and password is **admin/123456**. Other related setup about user account and password, please check “**4-5 Account Setup**.”



Step Three: Click on the link to start downloading the AP software.



Step Four: Run or Save our AP software.



Step Five: If you choose to run the software, Start window will be shown up. Please enter information of login DVR: IP, Port, Username and Password, or choose "Play Recorded File" to open backup files in your PC.

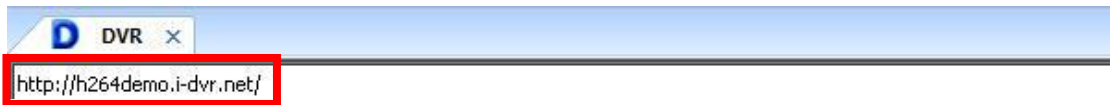


Step Six: You've logged into the DVR



3-2 How to do remote monitoring through IE

Step One : Enter the IP address of DVR in IE browser. The address appeared in this image is only for demonstration. Actual address is depending on the setup of on-site DVR.



Step Two: Windows as below will show up. Please enter the user name and password. Default user name and password is **admin/123456**. Other related setup about user account and password, please check “**4-5 Account Setup**.” The user name and password appeared in this image is only for demonstration. Actual user name and password depend on the setup of on-site DVR.



Step Three: Click on “Internet Explorer 6, 7, and 8” to start downloading the AP software. (The first option is for IE view, please refer to next chapter for more information)

p.s. There will be IE connection security issue when clicking this link for the first time. Please refer to index II for Remote Monitoring IE ActiveX Control Installation Instruction.

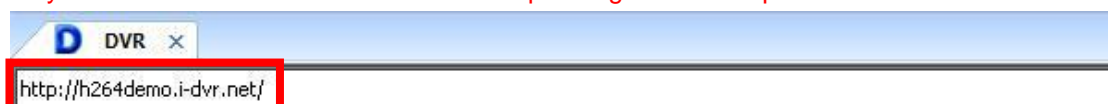


Step Four: DVR images appear.



3-3 How to do remote monitoring through JPEG VIEWER(Only Monitor Function)

Step One : Enter the IP address of DVR in IE browser. The address appeared in this image is only for demonstration. Actual address is depending on the setup of on-site DVR.



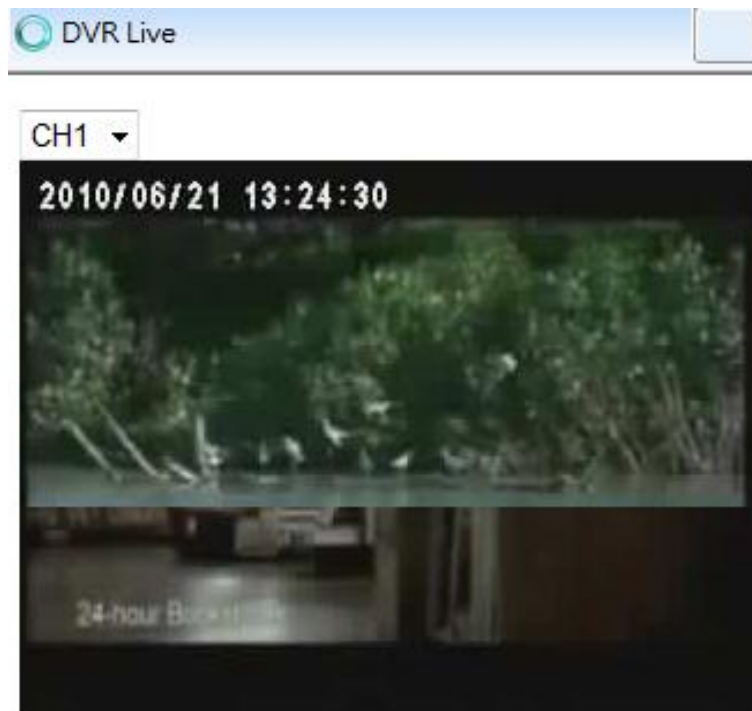
Step Two: Windows as below will show up. Please enter the user name and password. Default user name and password is **admin/123456**. Other related setup about user account and password, please check “4-5 Account Setup.” The user name and password appeared in this image is only for demonstration. Actual user name and password depend on the setup of on-site DVR.



Step Three: Click on “Jpeg Viewer”



Step Four: DVR images appear.



PS : Only for viewer, without any operation function.

3-4 AP Software Operation

Open the file “DVRemoteDesktop.exe”; enter the information of DVR “IP address”, “Port” “Username” and “Password” and click “OK”. You should be able to login DVR successfully and start to use the software. The default username and password is 「 admin/ 123456 」

“DVRemoteDesktop.exe” AP software provides some extra functions for remote users. Please check **Table 3-4.1** for minimum system requirements for “DVRemoteDesktop.exe” operation.

Table 3-4.1 System Requirements for AP software

CPU	Intel Pentium 4 above
OS	Microsoft Windows 7 、 Windows Vista 、 Windows XP SP2 above
RAM	512M above
VGA Card	Needed to support DirectX9.0 (Above) Note 1
Others	DirectX 9.0 above

Note 1:

Known VGA card that support DirectX9.0 currently:

NVIDIA: Geforce FXseries, Geforce 6series, Geforce 7series, Geforce 8series, Geforce 9series, Geforce 200series, etc.

Or

visit: http://en.wikipedia.org/wiki/Comparison_of_Nvidia_graphics_processing_units

ATI: Radeon R300series, Radeon R400series, Radeon R500series, Radeon R600series, Radeon R700series, Radeon HD 3xxx IGPseries, Mobility Radeonseries (9500 above), Mobility Radeon Xseries, Mobility Radeon HDseries, or FireGL Vseries etc.

Or visit: http://en.wikipedia.org/wiki/Comparison_of_ATI_graphics_processing_units

SiS: SiS 67Xseries, or SiS 77Xseries etc.

Or visit: http://www.sis.com/support/support_compare.htm

Intel: 91Xseries, 94Xseries, 96Xseries, G3Xseries, or G4Xseries, etc.

Or visit: http://en.wikipedia.org/wiki/Intel_GMA

CHAPTER 4 Specifications

Model	W	WS	ZA-N	W	WS	ZA-N	Z-N	ZA-N
Camera Input		4CH			8CH		16CH	
Video	HDMI	N/A	N/A	1 (Option) (Video Output [1280x1024] + Audio Output)	N/A	N/A	1 (Option) (Video Output [1280x1024] + Audio Output)	1 (Option) (Video Output [1280x1024] + Audio Output)
	Input	4	4	4	8	8	16	16
	Output	TVGA (1280x1024) + 1BNC for CO-Monitor / TVGA (1280x1024) + 1BNC for SPOT Monitor.						
Audio	Input	1 RCA	1 RCA	4 RCA	1 RCA	4 RCA	16 RCA	16 RCA
	Output	1 RCA	1 RCA	2 RCA	1 RCA	2 RCA	2 RCA	2 RCA
System	Operating System	Embedded Linux OS						
	Internal HDD	Supports 1 SATA Device (HDDx1)	Supports 1 SATA Device (HDDx1)	Supports Max. x 2 SATA Devices (HDDx2, HDDx1+DVDx1 or HDDx1+e-SATA x 1)	Supports 1 SATA Device (HDDx1)	Supports 1 SATA Device (HDDx1)	Supports Max. x 2 SATA Devices (HDDx2, HDDx1+DVDx1 or HDDx1+e-SATA x 1)	Supports Max. x 4 SATA Devices (HDDx2+DVDx1+e-SATA x 1)
	External HDD	N/A	N/A	N/A	N/A	N/A	N/A	1 x e-SATA
	Sensor In (NO, NC) Relay out	N/A	N/A	N/A	N/A	Sensor-in x8 Relay-out x1	Sensor-in x16 Relay-out x2	Sensor-in x16 Relay-out x2
	Serial Interface	RS-485						
	USB	2 x USB2.0						
	Dimension (mm)	W: 225(w)x46(h)x215(d)	WS: 225(w)x46(h)x240(d)	430(w)x55(h)x293(d)	W: 225(w)x46(h)x215(d)	WS: 225(w)x46(h)x240(d)	430(w)x55(h)x293(d)	430(w)x55(h)x293(d)
	Weight (w/o HDD/DVD/RW)	0.77KG	0.85KG	1.8KG	0.82KG	0.89KG	1.85KG	1.85KG
	Adaptor	Input 100~240V, Output 12V 3A	Input 100~240V, Output 12V 3A	Input 100~240V, Output 12V 5A	Input 100~240V, Output 12V 3A	Input 100~240V, Output 12V 3A	Input 100~240V, Output 12V 5A	Input 100~240V, Output 12V 5A
	Power Source	30W	30W	60W	30W	30W	60W	72W
Display	Speed	120 fps	120 fps	120 fps	240 fps	240 fps	240 fps	480 fps
	Resolution (Pixel)	720 X 480(NTSC), 720 X 576(PAL)						
	Split screen	1,4. SEQ.	1,4. SEQ.	1,4. SEQ.	1,4,8. SEQ.	1,4,8. SEQ.	1,4,9,13,16 SEQ.	1,4,9,13,16 SEQ.
	Auto Channel Switching	Switching time : 1 ~ 999 sec						
Recording	Mode	Zoom (Digital x2~ x8), PIP, Auto SEQ. H.264 ASP (Internet Transmission: H.264)						
	Dual Stream Resolution (Pixel)	Main (Recording)	704 X 480, 704 X 240, 352 X 240 (NTSC) / 704 X 576, 704 X 288, 352 X 288 (PAL)					
		Sub (Network)	352 X 240 (NTSC), 352 X 288 (PAL)					
	Picture quality	5 levels (Highest, High, Normal, Basic, Below Basic)						
	Mode	Manual, Motion, Schedule	Manual, Motion, Schedule	Manual, Motion, Sensor, Schedule	Manual, Motion, Schedule	Manual, Motion, Schedule	Manual, Motion, Sensor, Schedule	
	Speed	NTSC	D1 120 fps(704 x 480) HD1 120 fps(704 x 240) CIF 120 fps(352 x 240)	D1 120 fps(704 x 480) HD1 120 fps(704 x 240) CIF 120 fps(352 x 240)	D1 120 fps(704 x 480) HD1 120 fps(704 x 240) CIF 120 fps(352 x 240)	D1 120 fps(704 x 480) HD1 240 fps(704 x 240) CIF 240 fps(352 x 240)	D1 120 fps(704 x 480) HD1 240 fps(704 x 240) CIF 240 fps(352 x 240)	D1 120 fps(704 x 480) HD1 240 fps(704 x 240) CIF 480 fps(352 x 240)
		PAL	D1 100 fps(704 x 576) HD1 100 fps(704 x 288) CIF 100 fps(352 x 288)	D1 100 fps(704 x 576) HD1 100 fps(704 x 288) CIF 100 fps(352 x 288)	D1 100 fps(704 x 576) HD1 100 fps(704 x 288) CIF 100 fps(352 x 288)	D1 100 fps(704 x 576) HD1 200 fps(704 x 288) CIF 200 fps(352 x 288)	D1 100 fps(704 x 576) HD1 200 fps(704 x 288) CIF 200 fps(352 x 288)	D1 100 fps(704 x 576) HD1 200 fps(704 x 288) CIF 400 fps(352 x 288)
	Pre-Alarm	10 SEC						
	Post-Alarm	1 ~ 60 SEC						
	Water Mark	YES						
Playback	Display	1, 4	1, 4	1, 4	1, 4, 8	1, 4, 8	1, 4, 8, 16	1, 4, 8, 16
	Search mode	Date, time, event, camera	Date, time, event, camera	Date, time, event(Motion, Sensor), camera	Date, time, event, camera	Date, time, event, camera	Date, time, event(Motion, Sensor), camera	
	Zoom	Digital (x2 ~ x8)						
	Snapshot	YES						
	Speed	Normal, REW & FF (recorded speed x2, x4, x8, x16, x32, x64), Frame to frame, Pause						
Network	Device	Int. HDD						
	Network Interface	10/100 Ethernet						
	Protocol	TCP/IP, SMTP, HTTP, DHCP, PPPoE(ADSL), NTP						
	Application	Windows XP/VISTA/PC Client system						
	Remote Software	Licensed Application Software, IE Browser						
	Account	1 Admin + 4 users						
	CMS	Unlimited (Depends on bandwidth)						
Backup	3G / GPRS	Symbian, Windows Mobile, BlackBerry, iPhone, Android phone						
	Event Transport	E-mail						
	Interface	USB 2.0 or SATA						
	Audio Backup	YES						
	Network	YES						
Backup Device (Optional)	Network Backup / USB Flash Drive / USB DVD+RW	Network Backup / USB Flash Drive / USB DVD+RW / SATA DVD+RW		Network Backup / USB Flash Drive / USB DVD+RW		Network Backup / USB Flash Drive / USB DVD+RW / SATA DVD+RW		
Alarm	Motion Detection	Detected Frames: Unlimited / Channel						
	Alarm Hold Time	Sensitivity : 10 levels for each channel						
	Search (Event Criterion)	Area : Programmable individually						
OSD & DVR Control	Event Log	YES						
	GUI	Up to the 10000 events (Sensor, Motion, video Loss, power on, remote login, logout, HDD error, HDD full)						
	Multi Language	16-bit True Color						
	Camera Title	English, Traditional Chinese, Others						
	USB Mouse	Multi-Language						
	Touch Panel	YES						
	Remote Controller	IR Remote Control (Max. 1 Device)					IR Remote Control (Max. 4 Device)	
	System Upgrade	via USB / Network						
	Hard Key	N/A	Front Panel	Front Panel	N/A	Front Panel	Front Panel	
	Pan/Tilt/Zoom Control	Control From RS485 Interface (Pelco P, Pelco D, Samsung, LG, LIn)						