

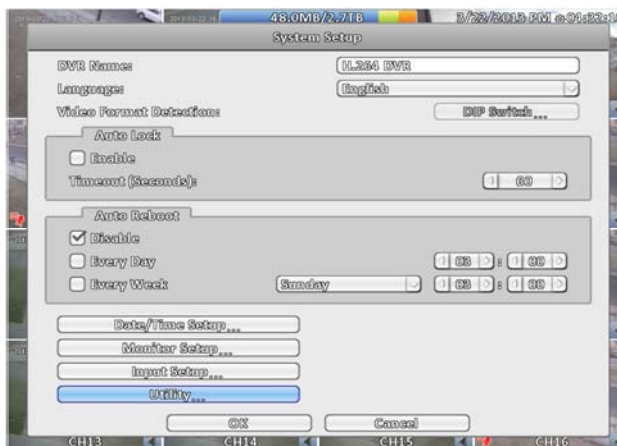
Guide to DVR Firmware Upgrade

(For Ameba i-Series & TP-Series H.264 DVR)

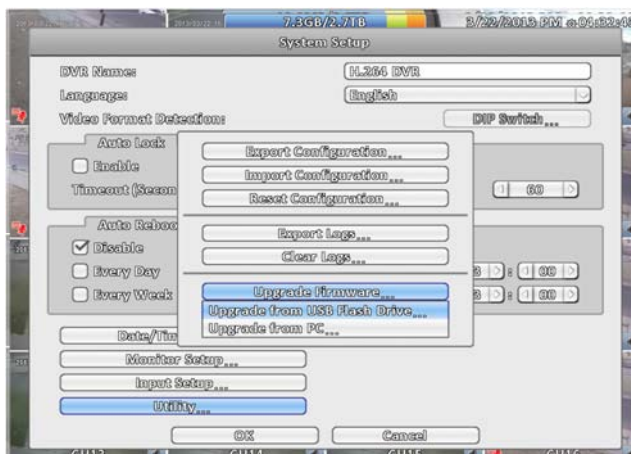
1. Before starting firmware upgrade, make sure to disable recording and have the latest firmware ready on a USB flash drive or remote PC.
2. At DVR's Main Menu, select "System Information".



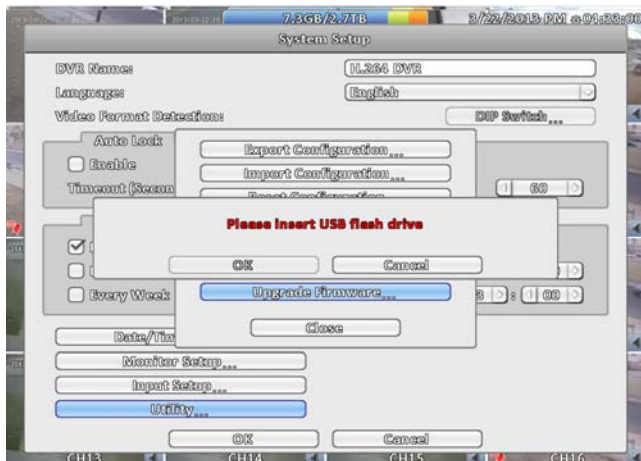
3. Next, select "Utility" as shown below.



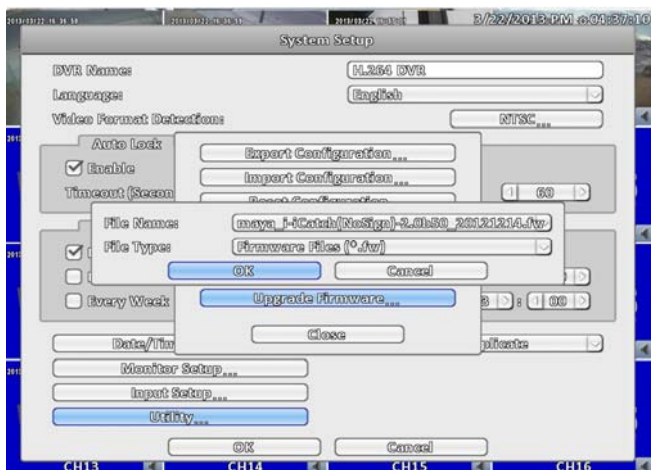
4. Select "Upgrade Firmware". (Make sure you have the latest firmware ready.)
 - If you are upgrading DVR firmware at the location of DVR, select "Upgrade from USB Flash Drive".
 - If you are upgrading DVR firmware from a remote location via internet, select "Upgrade form PC".



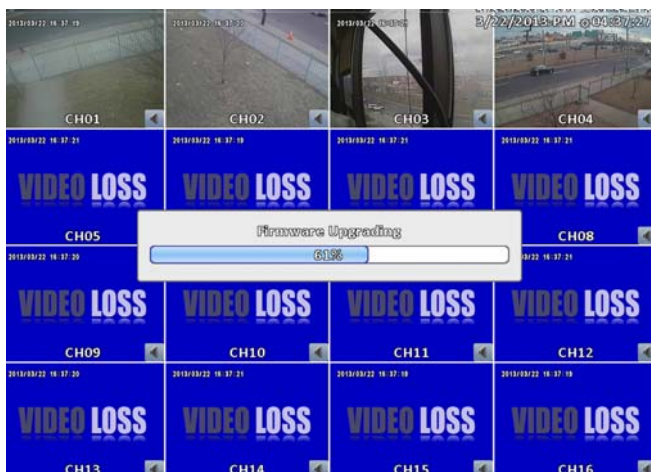
5. Insert your USB flash drive to the USB port of the DVR.



6. Select the file of latest firmware for upgrade and click "OK". (The file shall be displayed automatically, as long as you have the correct firmware for the DVR.)



7. The system will then start upgrading. This process may take a few minutes.



8. When upgrade completes, the system will automatic reboot.



9. The upgrade is now complete. Do not forget to enable the recording schedule you have set previously.

For additional information, please refer to the "User Manual" of the DVR or visit us at www.amebacctv.com.