

THE ONE DVR

Innovative Features and Ultra Friendly

By AMEBA TECHNOLOGY

Explore HD

Complete HD-SDI Solution



What is HD-SDI?



High Definition - Serial Digital Interface

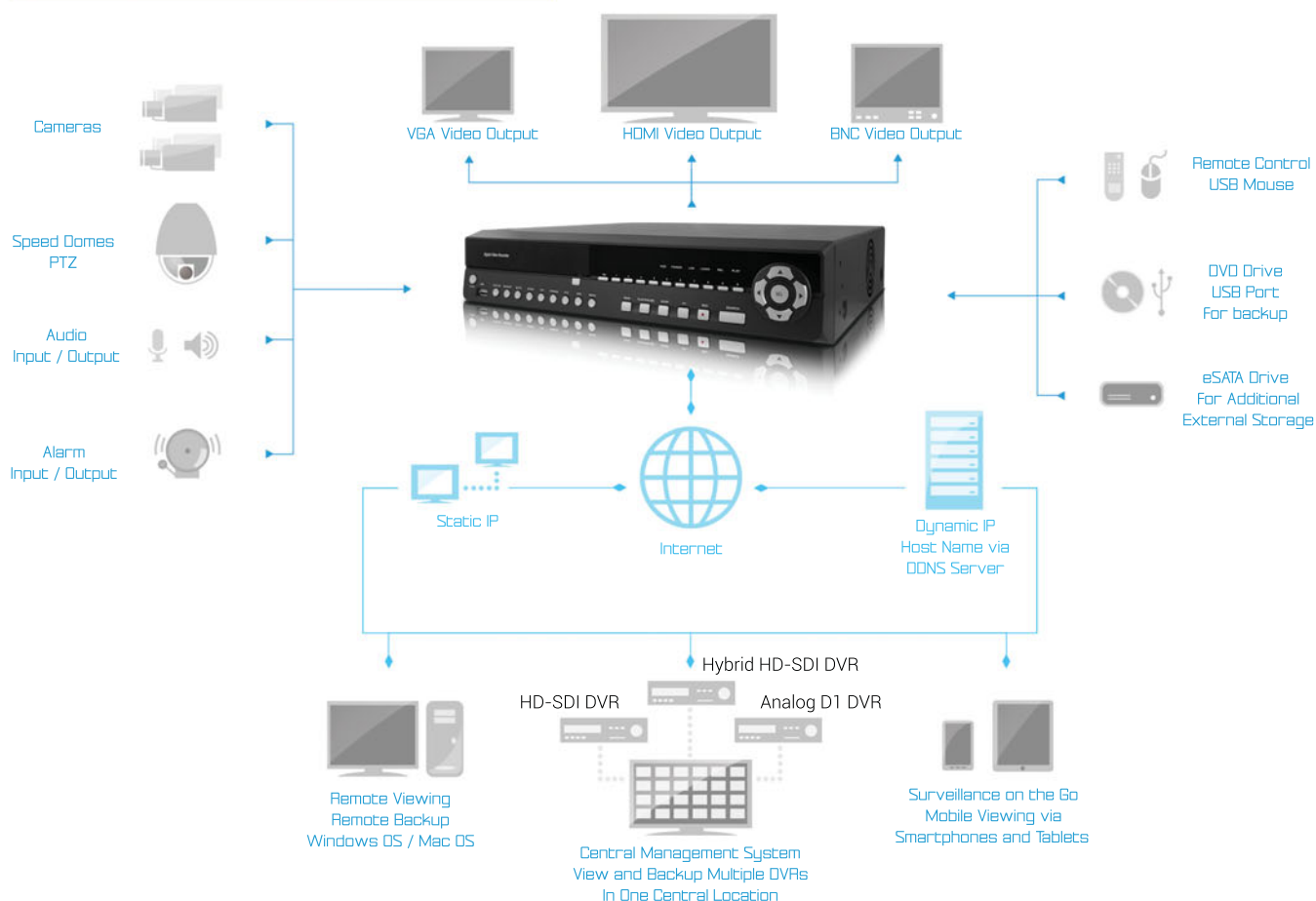
HD-SDI allows for high definition uncompressed digital video transmission over coaxial cables.

While this technology is not new, it was predominately used only by professional TV broadcast studios.

As the digital era evolves, more people are demanding for affordable high definition surveillance equipments.

HD-SDI is here to answer.

System Configuration



HDMI Full HD 1080p

High definition videos are displayed through HDMI connection to the HD TVs. With a maximum resolution of 1920x1080 Full HD, high detailed and stunning pictures capture every important detail. In addition to HDMI, VGA and BNC video outputs are convenient for multiple monitors installation.

Auto-Adjust to Screen Ratio

Auto adjust from 4:3 standard screen to 16:9 wide screen aspect ratio. In wide screen mode side control panels can be turned on for easy access to frequently used functions. (Feature available on TP and HD Series)

eSATA External Storage

On typical DVRs the available storage is limited by how many internal hard drives can physically fit within the DVR's case. With eSATA external connection, this limitation is lifted allowing for much greater storage space to accommodate the increasing demand for longer recording periods.

Cross Platform Viewing

Remote desktop software supports both Windows OS and Mac OS for remote viewing. The remote desktop software can be downloaded directly from the DVR when connected using the web browser.

Mobile Viewing

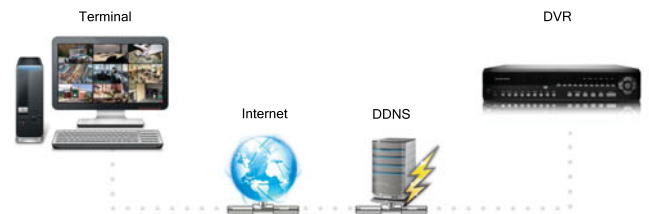
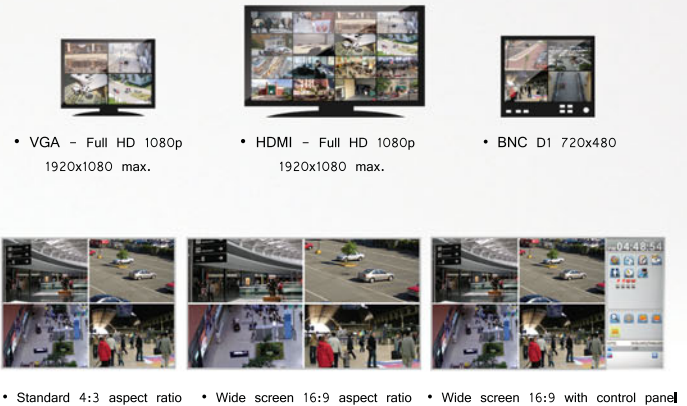
Surveillance on the go, anytime, anywhere. These days everything is going mobile, surveillance is no exception. Mobile apps are downloadable directly from the app store and marketplace on iPhones, iPads and Android devices. Installation files are provided for BlackBerry, Windows Phone and Symbian devices.

Dedicated DDNS

With the high cost of leasing a static IP from the internet service providers, more end users are saving cost with dynamic IP addresses. With dynamic IP the users need to constantly check the current IP if they want to connect to their DVR. This is where DDNS service comes in. DDNS service provides the user with a static hostname of their choosing that will never change. In the background the DVR will sync its current IP with the hostname automatically. When users enters the hostname they will be directed to the correct IP.

Central Management System

CMS (Central Management System) provides an administrative solution for managing multiple surveillance sites. This powerful management tool enables users to not only monitor but also control all their DVRs remotely from one centralized location. With features such as eMap management, instant or scheduled recording, event playback, and alarm notifications the CMS gives all the tools you need at your fingertips. Up to 64 channels can be multiplexed onto one screen and the software allows as many connections to DVRs as your network bandwidth can support.



• Monitor multiple remote sites at one central location

HD-SDI

TP-Series

Full 1080p HD



Features

1080p
Real Time
Recording

- ▶ 4/8/16 HD-SDI (1920x1080) Video Inputs
- ▶ Real-Time Full HD 1080p Recording
- ▶ HDMI 1080p (1920x1080) HD Video Output
- ▶ Audio Recording
- ▶ CMS with E-Map Support
- ▶ Dedicated Ameba DDNS Service
- ▶ Backup via USB/Remote PC/ DVD-RW (Optional)
- ▶ Supports eSATA HDD for High Capacity Storage
- ▶ 16:9 Wide Screen or Standard 4:3 Display
- ▶ Supports both Mac OS and Windows
- ▶ On Screen PTZ Controls (RS-485)
- ▶ Touch-Panel LCD Monitor Supported
- ▶ Mobile Viewing with Smartphones and Tablets
- ▶ Supports up to 4 Internal HDD
- ▶ User Friendly GUI

Why HD-SDI?

Ease of installation -

HD-SDI can be installed over the existing coaxial infrastructure without rewiring. Only the DVR and the cameras need to be replaced which lowers installation cost.

Mega Pixel video -

Full HD 1080p (1920x1080) digital video transmission. Having a massive 1.485Gbps bandwidth, HD-SDI can send raw uncompressed digital signals with no loss in video quality.

Crystal Clear images -

High definition digital video transmission over coaxial infrastructure. Ultra clear images enables super fine details to be captured where traditional analog systems could not. Uncompressed digital transmission means there will be no quality loss due to compression. Typical range of HD-SDI is 300 ft. or 100M. This ranged can be extended with our repeaters.



1080p compared to D1

When viewing on a 1080p compatible TV or monitor, HD-SDI DVR's massive 1920x1080 resolution creates exceptionally detailed and rich videos that conventional D1 analog DVRs cannot match.



DVR-4HD [4Ch HD-SDI]



DVR-8HD [8Ch HD-SDI]



DVR-16HD [16Ch HD-SDI]



Mobile App

With the explosive growth in wireless technology, remote viewing of your surveillance equipment has taken a tremendous leap toward mobilization. We are no longer limited to sitting down in front of a computer to view our cameras. Now with mobile app for your smartphones you have the freedom to view your cameras whenever and wherever you go.



iPAD & Android Tablets



HD-SDI DVR

Model		DVR-4HD	DVR-8HD	DVR-16HD
Video	Camera Input	4 Channel	8 Channel	16 Channel
	Input	4 x HD-SDI	8 x HD-SDI	16 x HD-SDI
	HDMI Output w/ Audio	1 x HDMI Output (1920x1080, 1024x768, 1280x1024, 1366x768, 1440x900)		
Audio	Output	1 x VGA (1920x1080, 1024x768, 1280x1024, 1366x768, 1440x900) + 1 x BNC (720x480) (Main)		
	Input	4 x RCA	8 x RCA	8 x RCA
	Output	2 x RCA		
System	Operating System	Embedded Linux OS		
	Internal HDD	Supports Max. x 7 SATA Devices (HDDx6+eSATAx1, HDDx4+DVDx1+eSATAx1)		
	External HDD	Yes (eSATA)		
	Sensor In, Relay Out	Sensor-in x 4, Relay-Out x 4	Sensor-in x 8, Relay-Out x 4	Sensor-in x 16, Relay-Out x 4
	Serial Interface	RS-485		
	USB	2 x USB 2.0		
	Dimension WxHxD	442 x 92 x 438mm / 17.4" x 3.63" x 17.25"		
	Weight (w/o HDD/DVD)	5KG / 11 lbs.		
	Power Supply	220V/110V		
	Power Consumption	220W		
Display	Frame Rate	120fps @ 1080p/720p	240fps @ 1080p/720p	480fps @ 1080p/720p
	Resolution	1920 x 1080 / 1280 x 720		
	Split Screen	1, 4, Seq.	1,4,8, Seq.	1,4,8,16, Seq.
	Auto Channel Switching	Switching time: 1~99 sec.		
	Mode	Zoom (Digital x2~x8), PIP, Auto Seq.		
Recording	Compression	H.264 High Profile		
	Recording Resolution	1920 x 1080, 1280 x 720		
	Network Resolution	640 x 360 / 320 x 180		
	Picture Quality	10~100 levels of adjustment		
	Mode	Normal, Manual, Event, Schedule		
	Frame Rate	120 fps	240 fps	480 fps
	Pre-Alarm	1~10 Sec.		
	Post-Alarm	1~100 Sec.		
Playback	Watermark	Yes		
	Display	1,4	1,4,8	1,4,8,16
	Search Mode	Date, time, Event (Motion, Sensor)		
	Zoom	Digital (x2 - x8)		
	Snapshot	Yes		
	Playback Speed	Play, Pause, Stop, Slow(1/2, 1/4, 1/8), FF(4, 8, 16, 32), REW(4, 8, 16, 32), Frame Step		
Network	Device	Internal HDD		
	Network Interface	10/100/1000 Ethernet		
	Protocol	TCP/IP, SMTP, HTTP, DHCP, PPPoE (ADSL), NTP, DDNS		
	Remote OS	Windows XP/VISTA/7 and Mac OS 10.6 +		
	Remote Software	iWatch DVR, IE Browser		
	Accounts	1 Admin + 8 Users		
	CMS	CMS for Windows XP, Windows Vista, Windows 7		
	Mobile Device	Symbian, Windows Mobile, BlackBerry, iPhone, Android, iPad, Android Tablets		
Backup	Event Notification	Email		
	Interface	USB 2.0 or SATA		
	Audio Backup	Yes		
	Network	Yes		
Alarm	Backup Device	Network Backup / USB flash drive / USB DVD±RW / SATA DVD±RW (Optional)		
	Motion Detection	Sensitivity: 100 levels for each Channel, Area: Programmable individually		
	Search (Event Criterion)	Yes		
OSD & DVR Control	Event Log	Up to 10,000 Events (Sensor,Motion,Video Loss,PowerOn,Remote Login,Logout,HDD error,HDD full)		
	GUI	32-bit True Color		
	Multi-Language	English, Spanish, French, Korean, Chinese, Japanese, German, Portuguese, Italian, Russian, Greek, Polish, Hungarian, Dutch, Hebrew, Thai		
	Camera Title	Multi-Language		
	USB Mouse	Yes		
	Touch Panel	Touch Panel LCD Monitor (USB Interface, EETI Chipset Only)		
	Remote Controller	IR Remote Control (Max. 4 Devices)		
	System Upgrade	Via USB/Network		
	Pan/Tilt/Zoom/Control	Control from RS-485 Interface (Pelco P, Pelco D, Samsung, LG, LiLin)		

* Specifications Subjected to Change Without Prior Notice



HYBRID

TP-Series

HD-SDI + Analog



Features

- ▶ HD-SDI + Analog Video Inputs
- ▶ Real-Time Full HD 1080p Recording
- ▶ Real-Time D1 Recording
- ▶ HDMI 1080p (1920x1080) HD Video Output
- ▶ Audio Recording
- ▶ CMS with E-Map Support
- ▶ Dedicated Ameba DDNS Service
- ▶ Backup via USB/Remote PC/ DVD-RW (Optional)
- ▶ Supports eSATA HDD for High Capacity Storage
- ▶ 16:9 Wide Screen or Standard 4:3 Display
- ▶ Supports both Mac OS and Windows
- ▶ On Screen PTZ Controls (RS-485)
- ▶ Touch-Panel LCD Monitor Supported
- ▶ Mobile Viewing with Smartphones and Tablets
- ▶ Supports up to 4 Internal HDD
- ▶ User Friendly GUI

Why Hybrid?

Adding HD to existing systems -

Have existing analog cameras but also want to install a few HD cameras? No problem, go hybrid. Hybrid DVRs can accept both conventional analog cameras and digital HD-SDI cameras.

Mega Pixel video (on HD-SDI Channels) -

Full HD 1080p (1920x1080) digital video transmission. Having a massive 1.485Gbps bandwidth, HD-SDI can send raw uncompressed digital signals with no loss in video quality.

Crystal Clear images (on HD-SDI Channels) -

High definition digital video transmission over coaxial infrastructure. Ultra clear images enables super fine details to be captured where traditional analog systems could not. Uncompressed digital transmission means there will be no quality loss due to compression. Typical range of HD-SDI is 300 ft. or 100M. This range can be extended with our repeaters.



1080p compared to D1

When viewing on a 1080p compatible TV or monitor, HD-SDI DVR's massive 1920x1080 resolution creates exceptionally detailed and rich videos that conventional D1 analog DVRs cannot match.



DVR-1HD8 [9 Channels, 1x HD-SDI + 8x Analog]



DVR-2HD8 [10 Channels, 2x HD-SDI + 8x Analog]



DVR-4HD16 [20 Channels, 4x HD-SDI + 16x Analog]



Mobile App

With the explosive growth in wireless technology, remote viewing of your surveillance equipment has taken a tremendous leap toward mobilization. We are no longer limited to sitting down in front of a computer to view our cameras. Now with mobile app for your smartphones you have the freedom to view your cameras whenever and wherever you go.



HYBRID DVR

Model		DVR-1HD8	DVR-2HD8	DVR-4HD16
Video	Camera Input	9 Channels	10 Channels	20 Channels
	Input	HD-SDI Camera x 1 + Analog Camera x 8	HD-SDI Camera x 2 + Analog Camera x 8	HD-SDI Camera x 4 + Analog Camera x16
	HDMI Output w/ Audio	1x (Optional) [1280x1024]	1x (1920x1080, 1024x768, 1280x1024, 1366x768, 1440x900)	
	Output (VGA)	1 x (800x600, 1024x768, 1280x1024)		
	Output (BNC)	1 x (1920x1080, 1024x768, 1280x1024, 1366x768, 1440x900)		
Audio	Input	1 x BNC (720x480) (Main)		
	Output	8 x RCA	2 x RCA	20 x RCA
System	Operating System	Embedded Linux OS		
	Internal HDD	Max. x4 SATA Devices (Max. 3 x HDD)		Max. x7 SATA Devices (Max. 6 x HDD)
	External HDD	Yes (eSATA)		
	Sensor In, Relay Out	Sensor-in x 9, Relay-Out x 2	Sensor-in x 10, Relay-Out x 2	Sensor-in x 16, Relay-Out x 4
	Serial Interface	RS-485		
	USB	2 x USB 2.0		
	Dimension WxHxD	430 x 55 x 293mm / 16.93" x 2.17" x 11.54"		442 x 92 x 438mm / 17.4" x 3.63" x 17.25"
	Weight (w/o HDD/DVD)	0.85KG / 4.08 lbs.		5KG / 11 lbs.
	Power Supply	Input 100~240V. Output 12V 6A		220V/110V
	Power Consumption	72W		220W
Display	Frame Rate	720p 30fps, D1 240 fps	1080p/720p 60fps, D1 240 fps	1080p/720p 120fps, D1 480 fps
	Resolution	720p / 720x480	1080p / 720p / 720x480	
	Split Screen	1, 4, 9, Seq.	1, 4, 10, Seq.	1, 4, 9, 13, 20, Seq.
	Auto Channel Switching	Switching time: 1~99 sec.		
	Mode	Zoom (Digital x2~x5), PIP, Auto Seq.		
Recording	Compression	H.264 High Profile		
	Recording Resolution	720p for HD 1 704x480, 704x240, 352x240 for CH 2~9	1080p/720p for HD 1~2 704x480, 704x240, 352x240 for CH 3~10	1080p/720p for HD 1~4 704x480, 704x240, 352x240 for CH 5~20
	Network Resolution	352x240, 176x120 (NTSC), 352x288, 176x144 (PAL)		
	Picture Quality	10~100 levels for adjustment		
	Mode	Manual, Motion, Sensor, Schedule		
	Frame Rate	720p 30 fps (for HD 1) & D1 45 fps (for CH2~8) Or Max. D1 120 fps (for 9 Channels)	1080p 60 fps (for HD 1, 2) D1 240 fps (for CH 3 ~ CH 10)	1080p 120 fps (for HD 1~4) D1 480 fps (for CH 5 ~ CH 20)
	Pre-Alarm	10 Sec.		
	Post-Alarm	1~100 Sec.		
	Watermark	Yes		
	Playback	Display	1, 4, 9	1,4,10
Search Mode		Date, time, Event (Motion, Sensor), Camera		
Zoom		Digital (x2 - x5)		
Snapshot		No	Yes	Yes
Playback Speed		Play, Pause, Stop, Slow(1/2, 1/4, 1/8), FF(4, 8, 16), REW(4, 8, 16), Step		
Network	Device	Internal HDD		
	Network Interface	10/100 Ethernet	10/100/1000 Ethernet	
	Protocol	TCP/IP, SMTP, HTTP, DHCP, PPPoE (ADSL), NTP, DDNS		
	Remote OS	Windows XP/VISTA/7 and Mac OS 10.6 +		
	Remote Software	iWatch DVR, IE Browser		
	Accounts	1 Admin + 10 Users	1 Admin + 8 Users	
	CMS	CMS for Windows XP, Windows Vista, Windows 7		
	Mobile Device	Windows Mobile, Blackberry, iPhone, Android, iPad, Android Tablets		
Backup	Event Notification	Email		
	Interface	USB 2.0 or SATA		
	Audio Backup	Yes		
	Network	Yes		
Alarm	Backup Device	Network Backup / USB flash drive / USB DVD±RW / SATA DVD±RW (Optional)		
	Motion Detection	Sensitivity: 100 levels for each Channel, Area: Programmable individually		
	Search (Event Criterion)	Yes		
OSD & DVR Control	Event Log	Up to 10,000 Events (Sensor,Motion,Video Loss,PowerOn,Remote Login,Logout,HDD error,HDD full)		
	GUI	16-bit True Color	32-bit True Color	
	Multi-Language	English, Spanish, French, Korean, Chinese, Japanese, German, Portuguese, Italian, Russian, Greek, Polish, Hungarian, Dutch, Hebrew, Thai		
	Camera Title	Multi-Language		
	USB Mouse	Yes		
	Touch Panel	Touch Panel LCD Monitor (USB Interface, EETI Chipset Only)		
	Remote Controller	IR Remote Control (Max. 4 Devices)		
	System Upgrade	Via USB/Network		
	Pan/Tilt/Zoom/Control	Control from RS-485 Interface (Pelco P, Pelco D, Samsung, LG, LiLin)		

* Specifications Subjected to Change Without Prior Notice



H.264

TP-Series

H.264 Full D1 Real Time



Features

- ▶ H.264 Recording Compression
- ▶ Pentaplex operation
- ▶ HDMI and VGA Output
- ▶ D1 Real-Time Recording for 8/16CH
- ▶ Half D1 Real-Time Recording for 32CH
- ▶ Audio recording
- ▶ CMS with E-Map Support
- ▶ Mobile viewing with smartphones and tablets
- ▶ Support both Mac OS and Windows
- ▶ Touch-Panel LCD Monitor Supported
- ▶ Up to 6 SATA devices
- ▶ HDMI and eSATA
- ▶ Backup via USB, Remote PC, DVD-RW (Optional)
- ▶ On screen PTZ controls (RS-485)
- ▶ Dedicated Ameba DDNS service
- ▶ Auto switch between 4:3 and 16:9 aspect ratio
- ▶ Easy access control panel in wide screen



H.264 Full D1 480 FPS Real Time

Real time D1 recording for 16 channel and real time half D1 recording for 32 channel allows for amazingly smooth video playback. H.264 plus D1 recording offers highly detailed pictures while maximizing hard drive capacity. At 704x480 resolution, recordings under D1 can be enlarged or zoomed in to find exactly what you are looking for. H.264 offers better quality and compression over MPEG4 recording. This means longer recording periods and smoother video streaming over the internet.

	D1 (fps/ch) 704x480	HD1 (fps/ch) 704x240	CIF (fps/ch) 352x240
8Ch	30 real time	30 real time	30 real time
16Ch	30 real time	30 real time	30 real time
32Ch	15	30 real time	30 real time



D1 (704x480) at full screen



CIF (352x240) at full screen

DVR-TP8N [8 Channels]



DVR-TP16N [16 Channels]



DVR-TP16 [16 Channels]



DVR-TP32 [32 Channels]



* Available on 8/16Ch

Mobile App

With the explosive growth in wireless technology, remote viewing of your surveillance equipment has taken a tremendous leap toward mobilization. We are no longer limited to sitting down in front of a computer to view our cameras. Now with mobile app for your smartphones you have the freedom to view your cameras whenever and wherever you go.



iPAD & Android Tablets



H.264 Full D1 Real Time DVR

Model	DVR-TP8N	DVR-TP16N	DVR-TP16	DVR-TP32
Video	Camera Input	8 Channels	16 Channels	16 Channels
	Input	8 BNC	16 BNC	32 BNC
	Loop Out	N/A	16 BNC loop out (1 per channel)	N/A
	HDMI Output w/ Audio	1 x (1920x1080, 1024x768, 1280x1024, 1366x768, 1440x900)		1x (1024x768, 1280x1024, 1366x768, 1440x900)
	Output	1 x VGA (1920x1080, 1024x768, 1280x1024, 1366x768, 1440x900)		1xVGA(1280x1024, 1366x768, 1440x900)
Audio		1 x BNC (720x480) (Mirror either HDMI or VGA)		
		1 x BNC (720x480) for Spot Monitor		
System	Input	8 x RCA	16 x RCA	
	Output	2 x RCA		
	Operating System	Embedded Linux OS		
	Internal HDD	Max. 3 SATA Devices (HDDx2, HDDx2+eSATAx1, HDDx1+DVDx1+eSATAx1)	Max. 4 SATA Devices (HDDx3, HDDx3+eSATAx1, HDDx2+DVDx1+eSATAx1)	Max. 7 SATA Devices (HDDx6, HDDx6+eSATAx1, HDDx4+DVDx1+eSATAx1)
	External HDD	1 x eSATA		
	Sensor In (NO, NC)	Sensor-in x 8	Sensor-in x 16	
	Relay out	Relay-out x 2	Relay-out x 4	
	Serial Interface	RS-485		
	USB 2.0	2 x USB2.0		
	Dimension (mm)	430(W)x55(H)x293(D)	442(W)x92(H)x438(D)	
	Weight (w/o HDD/DVD)	2 KG / 4.4 lbs	5 KG / 11 lbs	
	Power	12V 5A	12V 6A	110V/220V Built-in transformer
Display	Power Source	60W	72W	220W
	Speed	240 fps	480 fps	480 fps
	Resolution (pixels)		720 x 480	960 fps
	Split Screen	1,4,8,SEQ.	1,4, 9,13,16, SEQ.	1,4, 9,13,16, SEQ.
	Auto Channel	Switching time: 1~99 sec		
Recording	Mode	Zoom(Digital 2x~8x), PIP, Auto SEQ.		
	Compression	H.264 High Profile		
	Main Recording	704 x 480, 704 x 240, 352 x 240		
	Sub (Network)	352 x 240, 176 x 120		
	Picture Quality	10~100 levels for adjustment		
	Mode	Normal, Manual, Event, Schedule		
	Speed	D1 real-time (704x480) , HD1 real-time (704x240), CIF real-time (352x240)		
	Pre-Alarm	1~10 SEC		
	Post-Alarm	1~100 SEC		
	Watermark	Yes		
Playback	Display	1, 4, 8	1,4, 8, 16	1,4, 8, 16, 32
	Search Mode	Date/Time, Event		
	Zoom	Digital (2x~8x)		
	Snapshot	Yes		
	Speed	Play, Pause, Stop, Slow(1/2, 1/4, 1/8), FF(4,8,16,32), REW(4,8,16,32)		
		Frame by Frame		
	Device	Int.HDD		
Network	Network Interface	10/100/1000 Ethernet		
	Protocol	TCP/IP, SMTP, HTTP, DHCP, PPPoE(ADSL), NTP		
	Application	Windows XP/VISTA/7, Mac OS X (PC Client system)		
	Remote Software	iWatch DVR		
	Web Browser	IE Browser		
	Account	1 Admin + 8 Users		
	CMS	Unlimited Connections CMS for Windows XP, Vista, 7		
		Performace depends on bandwidth		
	Mobile Device	iPhone, iPad, Android, Windows Phone, Blackberry		
Backup	Mobile Viewing	iWatch DVR II app		
	Event Notification	Via E-mail		
	Interface	USB 2.0 or SATA		
	Audio Backup	Yes		
Alarm	Network	Yes		
	Backup Device	Network, USB flash drive, USB DVD±RW, SATA DVD±RW		
	Motion Detection	Detected Frames: Unlimited / Channel		
		Sensitivity: 100 levels per channel		
		Area: Programmable individually		
OSD & DVR	Alarm Hold Time	1~100 SEC		
	Event Search	Yes		
	Event Log	Up to 10,000 events(Sensor, Motion, Video Loss, Power On, Remote Login, Logout, HDD Error, HDD Full)		
	GUI	32-bit True Color		
	Multi-Language	English, Spanish, French, Korean, Chinese, Japanese, German, Portuguese, Italian, Russian, Greek, Polish, Hungarian, Dutch, Hebrew, Thai		
	Camera Title	Multi-Language		
	USB Mouse	Optional		
	Touch Panel	Touch Panel LCD Monitor (USB interface, EETI Chipset Only)		
	Remote Controller	IR Remote Control (Max. 4 Devices)		
	System Upgrade	via USB or Network		
Control	Hard Key	Front Panel		
	Pan/Tilt/Zoom Control	Control from RS-485 Interface (Pelco P/D, Samsung, LG, LiLin)		

* Specifications Subjected to Change Without Prior Notice



DVR-TP8N, DVR-TP16N



DVR-TP16, DVR-TP32

H.264

i-Series

H.264 D1 Recording



Features



- ▶ H.264 D1 704 x 480 Recording
- ▶ 480 FPS Real-Time recording
- ▶ HDMI & VGA output at 1280x1024
- ▶ Backup via USB, Remote PC, DVD-RW (Optional)
- ▶ Audio recording
- ▶ Mobile viewing with smartphones and tablets
- ▶ Support both Mac OS and Windows
- ▶ CMS unlimited remote connections
- ▶ Supports External SATA HDD (i8, i16 only)
- ▶ On screen PTZ controls (RS-485)
- ▶ Dedicated Ameba DDNS service
- ▶ Watermark identifies tampering of recorded data

H.264 120fps D1

H.264 plus D1 recording offers highly detailed pictures while maximizing hard drive capacity. At 704x480 resolution, recordings under D1 can be enlarged or zoomed in to find exactly what you are looking for. H.264 offers better quality and compression over MPEG4 recording. This means longer recording periods and smoother video streaming over the internet.

	D1 (fps/ch)	HD1 (fps/ch)	CIF (fps/ch)
	704x480	704x240	352x240
4Ch	30 real time	30 real time	30 real time
8Ch	15	30 real time	30 real time
16Ch	7	15	30 real time



D1 (704x480) at full screen



CIF (352x240) at full screen

DVR-i4s [4 Channels]

D1 Real Time



DVR-i8s [8 Channels]

DVR-i16s [16 Channels]

HD1 Real Time



DVR-i8 [8 Channels]

HD1 Real Time



DVR-i16 [16 Channels]

CIF Real Time



Mobile App

With the explosive growth in wireless technology, remote viewing of your surveillance equipment has taken a tremendous leap toward mobilization. We are no longer limited to sitting down in front of a computer to view our cameras. Now with mobile app for your smartphones you have the freedom to view your cameras whenever and wherever you go.



iPAD & Android Tablets



H.264 D1 DVR

Model		DVR-i4s	DVR-i8s	DVR-i8	DVR-i16	
Video	Camera Input	4 Channels	8 Channels		16 Channels	
	Input	4 (BNC)	8 (BNC)		16 (BNC)	
	HDMI Output w/ Audio	1x HDMI (1280x1024) (Optional)				
	Output	1 x BNC (Main/Spot), 1 x VGA (1280x1024)				
Audio	Input	4xRCA			16xRCA	
	Output	2xRCA				
System	Operating System	Embedded Linux OS				
	Internal HDD	1x SATA HDD	1x SATA HDD	Max. 2x SATA Devices	Max. 4x SATA Devices	
	External HDD	N/A	1x e-SATA			
	Sensor In (NO, NC)	Sensor-in x4	Sensor-in x8		Sensor-in x16	
	Relay out	Relay-out x 1			Relay-out x 2	
	Serial Interface	RS-485				
	USB 2.0	1x Mouse, 1x Flash Drive				
	Dimension WxHxD (mm)	225x46x240		430x55x293		
	Weight (w/o HDD/DVD)	2 lbs.		4 lbs.		
	Power	Input 100~240V				
		Output 12V 3A	Output 12V 3A	Output 12V 5A	Output 12V 6A	
	Power Source	36W	36W	60W	72W	
	Display	Speed	120fps	240fps		480fps
Resolution (pixels)		720x480 (NTSC), 720x576 (PAL)				
Split Screen		1,4, SEQ.	1,4,8, SEQ.		1,4,9,13,16, SEQ.	
Auto Channel		Switching time: 1~999 sec				
Mode		Zoom(Digital 2x~8x), PIP, Auto SEQ.				
Recording	Compression	H.264 ASP (Internet Transmission: H.264)				
	Main Recording	704x480, 704x240, 352x240 (NTSC) 704x576, 704x288, 352x288 (PAL)				
	Sub (Network)	352x240 (NTSC) 352x288 (PAL)				
	Picture Quality	Highest, High, Normal, Basic, Below Basic				
	Mode	Manual, Motion, Sensor, Schedule				
	Speed (NTSC)	120 fps D1 (704x480) 120 fps HD1 (704x240) 120 fps CIF (352x240)	120 fps D1 (704x480) 240 fps HD1 (704x240) 240 fps CIF (352x240)	120 fps D1 (704x480) 240 fps HD1 (704x240) 480 fps CIF (352x240)		
	Speed (PAL)	100 fps D1 (704x576) 100 fps HD1 (704x288) 100 fps CIF (352x288)	100 fps D1 (704x576) 200 fps HD1 (704x288) 200 fps CIF (352x288)	100 fps D1 (704x576) 200 fps HD1 (704x288) 400 fps CIF (352x288)		
	Pre-Alarm	10 SEC				
	Post-Alarm	1~60 SEC				
	Watermark	Yes				
	Playback	Display	1,4	1,4,8		1,4,8,16
		Search Mode	Date, Time, Event(Motion, Sensor), Camera			
		Zoom	Digital (2x~8x)			
Snapshot		Yes				
Speed		1x, 2x, 4x, 8x, 16x, 32x, 64x Frame by Frame, Pause				
Device		Int.HDD				
Network	Network Interface	10/100 Ethernet				
	Protocol	TCP/IP, SMTP, HTTP, DHCP, PPPoE(ADSL), NTP				
	Licensed Application	Windows XP/VISTA/7				
	Software	MAC OS 10.6 or above				
	Web Browser	IE Browser				
	Account	1 Admin + 10 Users				
	CMS	Unlimited Connections Performace depends on bandwidth				
	Mobile Device	iPhone, iPad, Android, Windows Phone, Blackberry				
	Mobile Viewing	iWatch DVR II app				
	Event Notification	Via E-mail				
Backup	Interface	USB 2.0 or SATA				
	Audio Backup	Yes				
	Network	Yes				
	Backup Device	Network, USB flash drive	Network, USB flash drive	Network, USB flash drive, DVD±RW (optional)		
Alarm	Motion Detection	Detected Frames: Unlimited / Channel Sensitivity: 10 levels per channel Area: Programmable individually				
	Alarm Hold Time	1~60 SEC				
	Event Search	Yes				
	Event Log	Up to 10,000 events(Sensor, Motion, Video Loss, Power On, Remote Login, Logout, HDD Error, HDD Full)				
OSD & DVR	GUI	16-bit True Color				
	Multi-Language	English, Spanish, French, Korean, Chinese, Japanese, German, Portuguese, Italian, Russian, Greek, Polish, Hungarian, Dutch, Hebrew, Thai				
	Camera Title	Multi-Language				
	USB Mouse	Optional				
Control	Remote Controller	Included				
	System Upgrade	via USB or Network				
	Hard Key	Front Panel				
	Pan/Tilt/Zoom	Control from RS-485 Interface (Pelco P/D, Samsung, LG, LiLin)				

* Specifications Subjected to Change Without Prior Notice

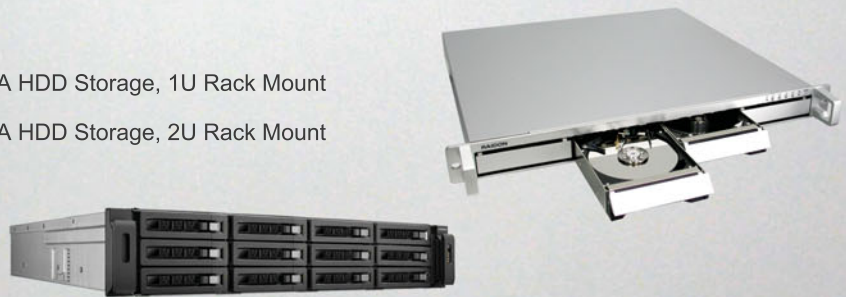
AMEBA TECHNOLOGY



- STH-1** HD-SDI to HDMI Converter
- HTS-1** HDMI to HD-SDI Converter
- STS-1** HD-SDI Repeater/Booster (1 in, 2 out)
- STS-4** HD-SDI Repeater/Booster (4 in, 4 out)



- ST7610-4s** External eSATA HDD Storage, 1U Rack Mount
- ST7610-8s** External eSATA HDD Storage, 2U Rack Mount



Distributed By:



<http://www.amebacctv.com>

New York
1-888-88-AMEBA
Tel: 718-886-9505
Fax: 718-886-9506
30-66 Whitestone Expressway
Flushing, NY 11354

California
1-800-97-AMEBA
Tel: 626-575-8811
Fax: 626-575-8833
4700 Miller Drive Unit B-5
Temple City, CA 91780

Canada
1-877-99-AMEBA
Tel: 514-342-6322
Fax: 514-342-6324
365 Isabey St.
St-Laurent, QC H4T 1Y2

Taiwan
Tel: 02-8985-3851
Fax: 02-8985-3857
5F.-3, No.1, Sec. 1, Chongyang Rd.
Sanchong Dist., New Taipei City 241
<http://www.amebacctv.com.tw>

China
5F, Industrial Building 1
Xian Nan Xi Qu
(Zhang Keng Village)
Minzhi Dist., Longhua, Baoan
Shenzhen, PRC