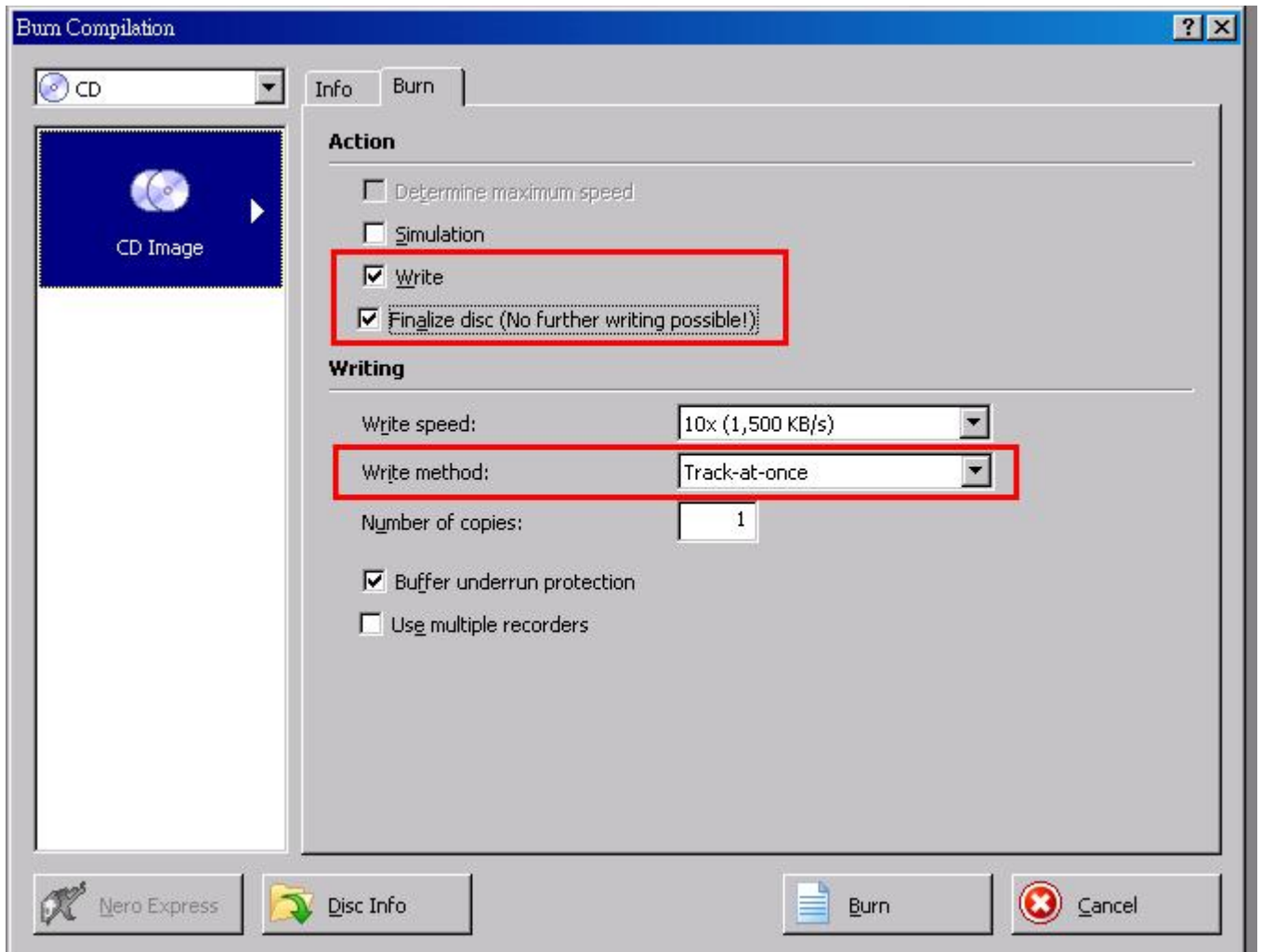


Update the Firmware via CD

1. Unzip the files till you see ISO files.
2. Copy the ISO file to a blank CD. In your CD Burning Program, use "Burn Image" to copy the file and one file one CD.



3. Turn on DVR and insert the CD.
4. Go into SYSTEM SETUP MENU and place the cursor on FACTORY DEFAULT.
(DO NOT enter FACTORY DEFAULT.)

SYSTEM MENU	
DISPLAY SETUP	
CONFIGURATION	
RECORD SETUP	
EXTERNAL DEVICE	
FACTORY DEFAULT	
LANGUAGE	ENGLISH
SELECT MENU : ▲▼, & [ENTER]	

5. Press and hold the PLAY + SEARCH buttons and then press ENTER.
DVR recognizes the CD and automatically enter the EEPROM UPGRADE page.
6. Upgrade is in progress. Follow the instructions from the DVR.

