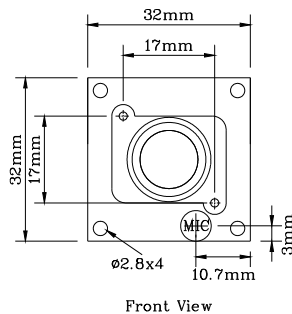
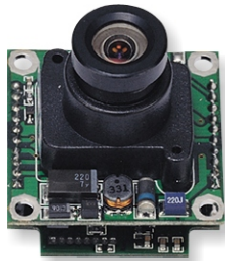
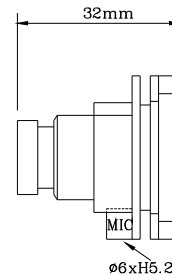


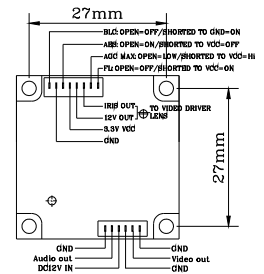
CC-9404



Front View

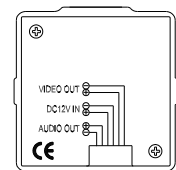
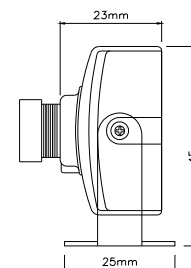
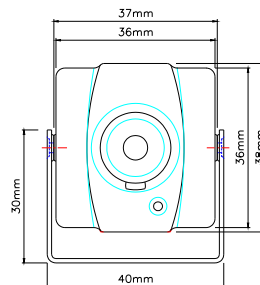


Side View



Rear View

CC-9404C



FEATURES

CC-9404

- SONY 1/4" Super HAD CCD sensor
- 330 TV Lines of Horizontal Resolution
- Minimum illumination of 0.5 Lux
- AES, AI, AGC, AWB, BLC

CC-9404C

- SONY 1/4" Super HAD CCD sensor
- 380 TV Lines of Horizontal Resolution
- Minimum illumination of 0.2 Lux
- AES, AGC, AWB, BLC

SPECIFICATION

Model Number	CC-9404	CC-9404C
Image Pick-up Device	SONY 1/4" Super HAD CCD sensor	
Effective Picture Element	NTSC: 510(H)x492(V), PAL: 500(H)x582(V)	
Horizontal Resolution	330 TV lines	380 TV lines
Minimum Illumination	0.5 LUX @ F2.0	0.2 LUX @ F2.0
S/N Ratio	More than 48dB	
Auto Electronic Shutter	NTSC: 1/60s~1/100,000s	
Auto Iris Control	Video-Drive Iris Control	_____
Flickerless Mode	NTSC: 1/100s PAL: 1/120s, ON/ OFF switchable	_____
Gamma Characteristic	0.45	
Lens Mount	3.6mm/F2.0 Board Lens (Optional: 2.5/4.3/6.0/8.0/12mm)	
Auto Gain Control	High/Low switchable	Yes
Auto White Balance	Yes (2500K~9500K)	
Back Light Compensation	High/Low switchable	Yes
Synchronous System	Internal, Negative Sync.	
Video Output	1 Vp-p / 75 Ohms (CC-9404C: BNC connector)	
Audio Output (Optional)	2 Vp-p / 50 Ohms (CC-9404C: RCA connector)	
Power Supply	12V DC	
Operating Temperature	-10 °C ~ 50 °C (14 °F ~ 122 °F)	

*Specifications subject to change without notice